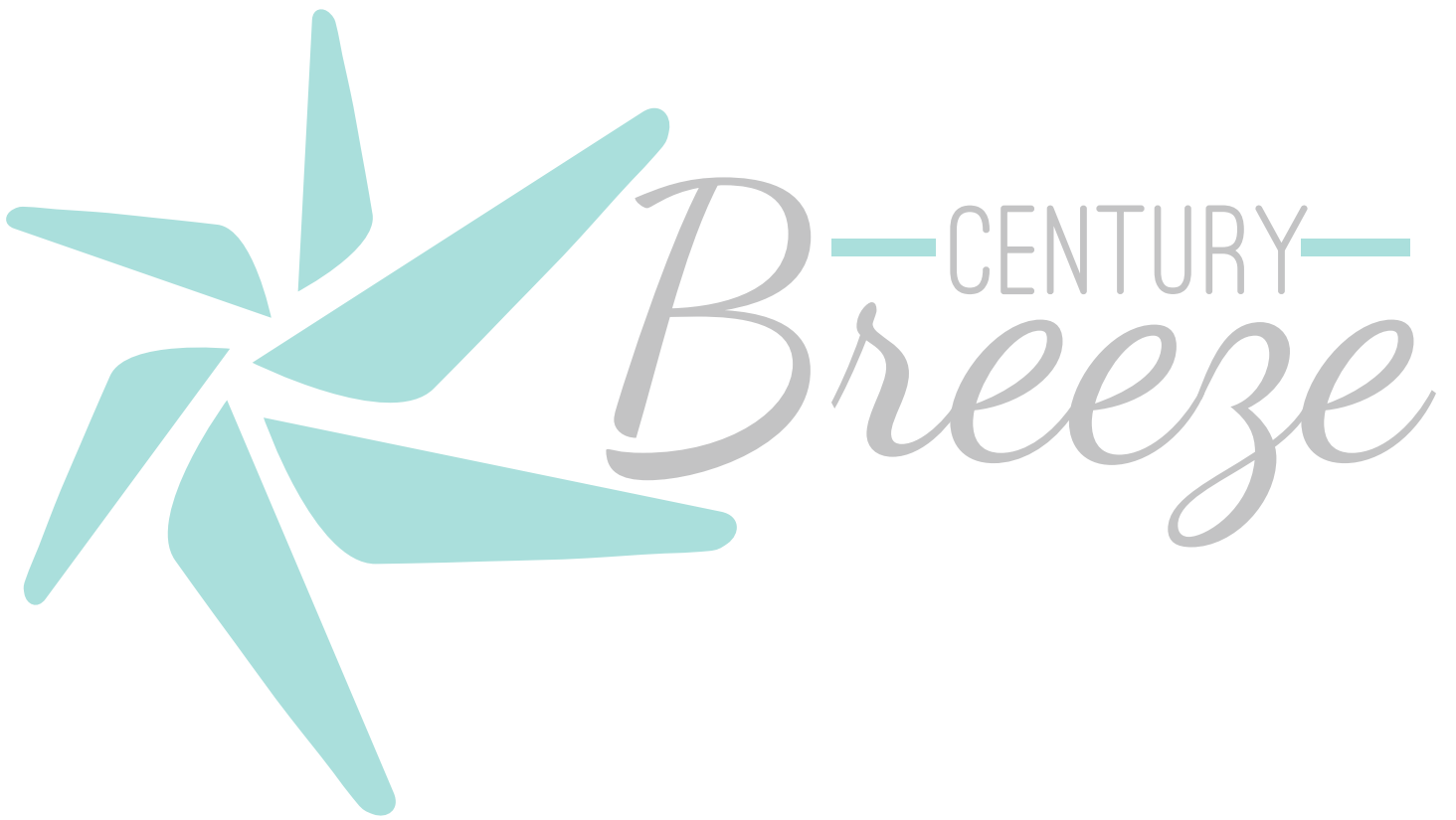
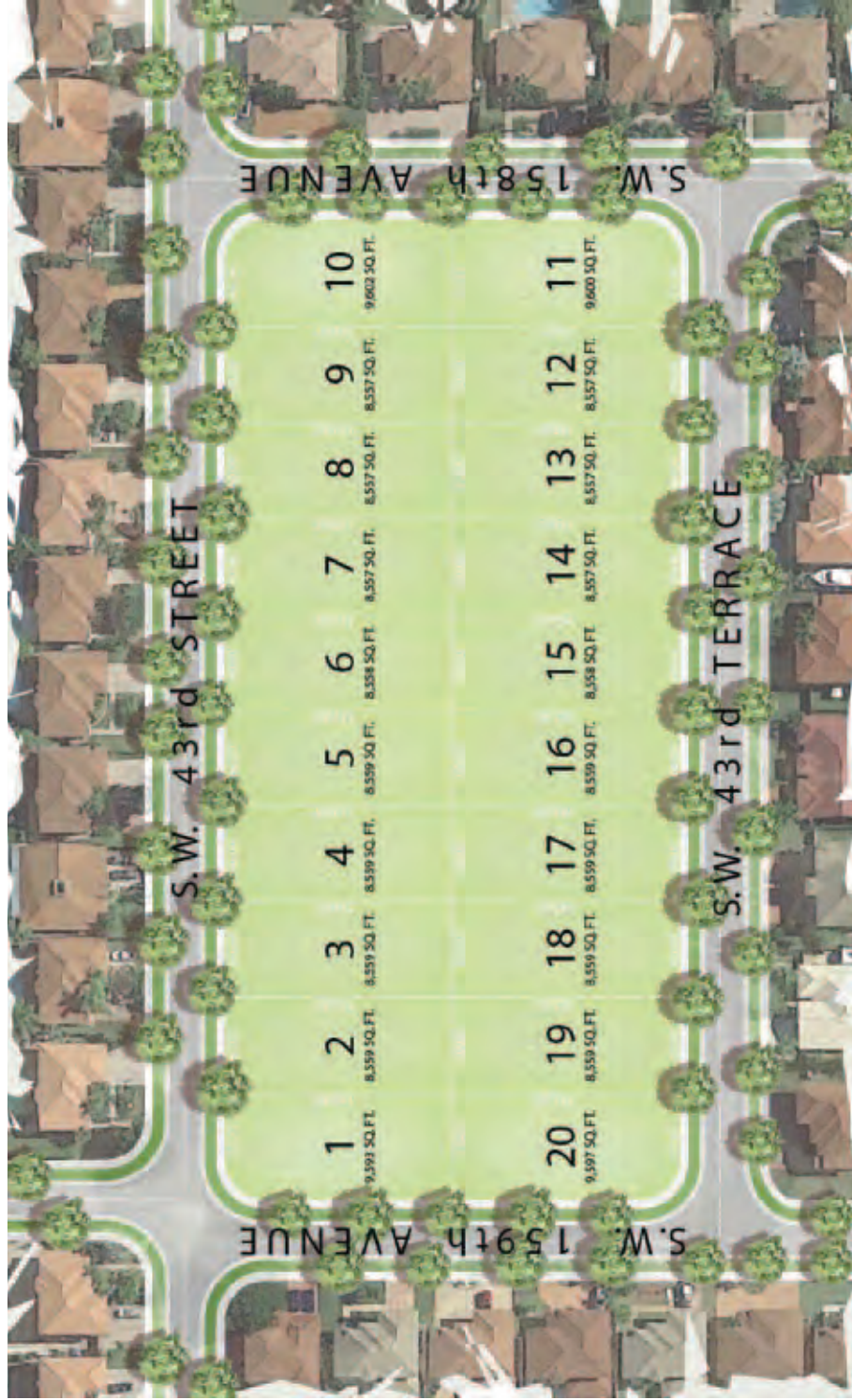




Century Breeze is located on  
158th Avenue SW 43rd Street  
Miami, FL 33193







ARTIST'S CONCEPT

SITE PLAN ▲

We endeavor to constantly improve our products, therefore siteplans, floor plans, elevations, specifications, features, designs, dimensions, sales materials, prices are all subject to change by Seller/Developer without notice. Floor plans are not to scale and may be reversed (mirror image) of those shown. All square footages are measured from the outside of the exterior walls and may change from those shown. Illustrations of elevations and floor plans are the artist's concept only and may also change. In production, plans and elevations may vary in precise details and dimensions. Landscaping is not to scale and may vary in size and maturity.



1-Story | 4 Bedrooms | 4 Baths | Family Room | 2-Car Garage



ELEVATION I

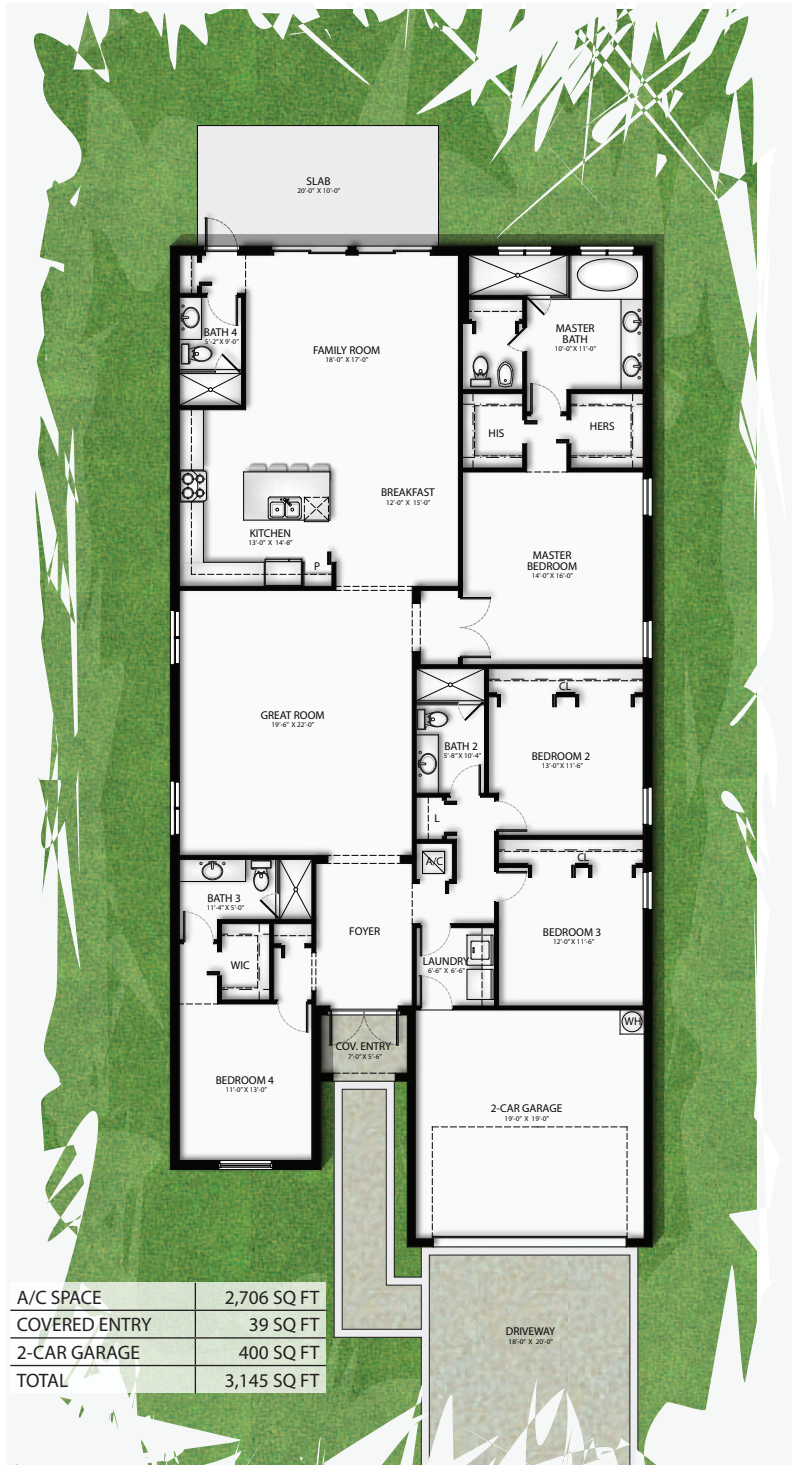


ELEVATION II

We endeavor to constantly improve our products, therefore siteplans, floor plans, elevations, specifications, features, designs, dimensions, sales materials, prices are all subject to change by Seller/Developer without notice. Floor plans are not to scale and may be reversed (mirror image) of those shown. All square footages are measured from the outside of the exterior walls and may change from those shown. Illustrations of elevations and floor plans are the artist's concept only and may also change. In production, plans and elevations may vary in precise details and dimensions. Landscaping is not to scale and may vary in size and maturity.



1-Story | 4 Bedrooms | 4 Baths | Family Room | 2-Car Garage





2-Story | 4 Bedrooms | 4 Baths | Family Room | 2-Car Garage



ELEVATION I



ELEVATION II

We endeavor to constantly improve our products, therefore siteplans, floor plans, elevations, specifications, features, designs, dimensions, sales materials, prices are all subject to change by Seller/Developer without notice. Floor plans are not to scale and may be reversed (mirror image) of those shown. All square footages are measured from the outside of the exterior walls and may change from those shown. Illustrations of elevations and floor plans are the artist's concept only and may also change. In production, plans and elevations may vary in precise details and dimensions. Landscaping is not to scale and may vary in size and maturity.



**CENTURY**  
*Breeze*  
BEGONIA

2-Story | 4 Bedrooms | 4 Baths | Family Room | 2-Car Garage





2-Story | 4 Bedrooms | 4 Baths | Family Room | 2-Car Garage



SECOND FLOOR



1-Story | 4 Bedrooms | 4.5 Baths | Family Room | 2-Car Garage



ELEVATION I



ELEVATION II



ELEVATION III

We endeavor to constantly improve our products, therefore siteplans, floor plans, elevations, specifications, features, designs, dimensions, sales materials, prices are all subject to change by Seller/Developer without notice. Floor plans are not to scale and may be reversed (mirror image) of those shown. All square footages are measured from the outside of the exterior walls and may change from those shown. Illustrations of elevations and floor plans are the artist's concept only and may also change. In production, plans and elevations may vary in precise details and dimensions. Landscaping is not to scale and may vary in size and maturity.



CENTURY  
Breeze  
CARNATION

1-Story | 4 Bedrooms | 4.5 Baths | Family Room | 2-Car Garage





2-Story | 5 Bedrooms | 4 Baths | Family Room | 2-Car Garage



ELEVATION I



ELEVATION II

We endeavor to constantly improve our products, therefore siteplans, floor plans, elevations, specifications, features, designs, dimensions, sales materials, prices are all subject to change by Seller/Developer without notice. Floor plans are not to scale and may be reversed (mirror image) of those shown. All square footages are measured from the outside of the exterior walls and may change from those shown. Illustrations of elevations and floor plans are the artist's concept only and may also change. In production, plans and elevations may vary in precise details and dimensions. Landscaping is not to scale and may vary in size and maturity.



CENTURY  
Breeze

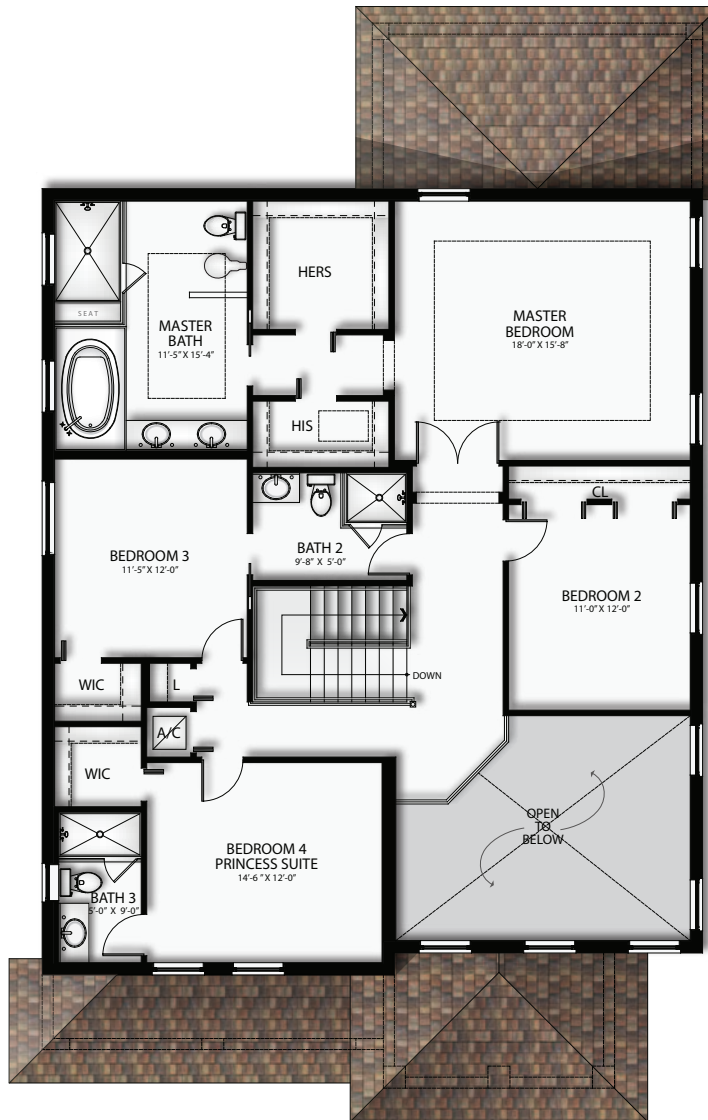
CAMELIA

2-Story | 5 Bedrooms | 4 Baths | Family Room | 2-Car Garage





2-Story | 5 Bedrooms | 4 Baths | Family Room | 2-Car Garage



SECOND FLOOR



2-Story | 5 Bedrooms | 5.5 Baths | Family Room | 2-Car Garage



ELEVATION I



ELEVATION II

We endeavor to constantly improve our products, therefore siteplans, floor plans, elevations, specifications, features, designs, dimensions, sales materials, prices are all subject to change by Seller/Developer without notice. Floor plans are not to scale and may be reversed (mirror image) of those shown. All square footages are measured from the outside of the exterior walls and may change from those shown. Illustrations of elevations and floor plans are the artist's concept only and may also change. In production, plans and elevations may vary in precise details and dimensions. Landscaping is not to scale and may vary in size and maturity.



CENTURY  
Breeze

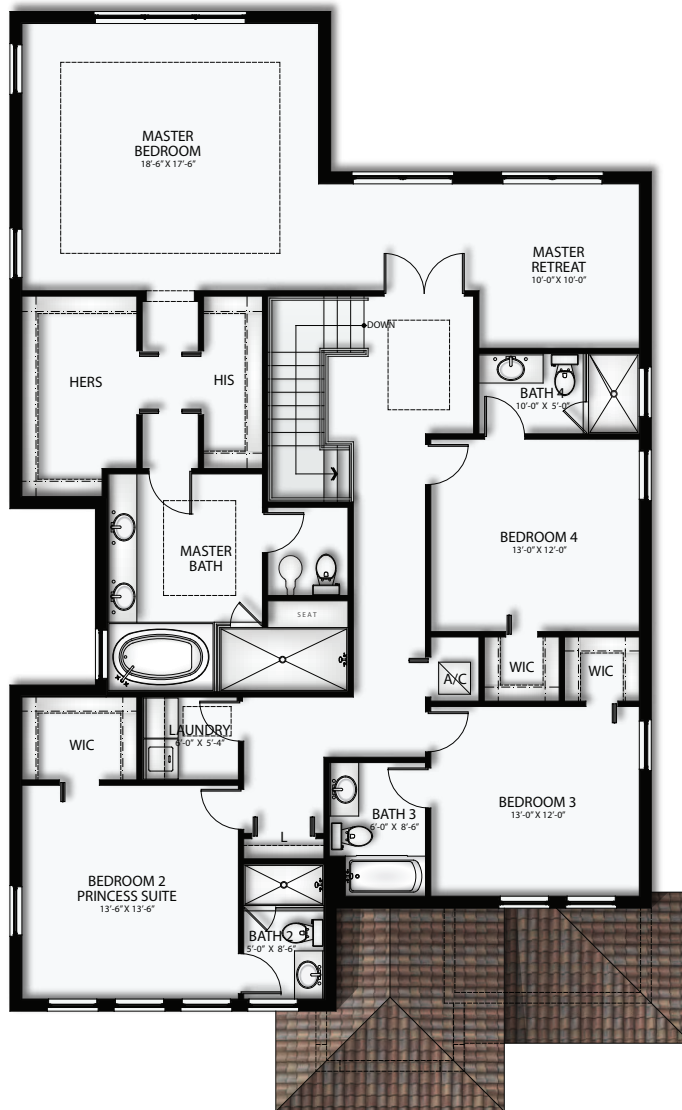
DAHLIA

2-Story | 5 Bedrooms | 5.5 Baths | Family Room | 2-Car Garage





2-Story | 5 Bedrooms | 5.5 Baths | Family Room | 2-Car Garage



SECOND FLOOR



## PRELIMINARY STANDARD FEATURES LIST

### YOUR COMMUNITY NEIGHBORHOOD:

- Beautiful home sites on over-sized lots
- Professionally designed landscaping
- Sidewalks throughout the community
- Community streetlights
- Underground utilities

### OUTSIDE YOUR HOME:

- Sturdy lifetime concrete block construction and full stucco texture walls
- Elegant brick paver driveways and walkways
- Elegant brick paver Covered Entry
- Elegant brick paver Covered Terrace
- Spanish concrete roof tiles
- Concrete second floor
- Exterior front and rear hose bibs
- Engineered hurricane protection for all openings
- Designer Coach lights on each side of garage (per plan)
- Designer exterior stone (per plan)

### THROUGHOUT YOUR HOME:

- 24" x 24" porcelain tile throughout the entire first floor living areas, hallways and in all bedrooms
- Elegant laminate wood stairs (per plan)
- Decorative 2 panel Contemporary style doors
- Contemporary-style baseboards
- Hurricane Impact Resistant Windows & Doors
- Pre-wired for ceiling fans in family room and all bedrooms
- Smoke Detectors
- Carbon Monoxide Detectors
- Knockdown textured walls and ceiling (except for bathrooms)
- Pre-wired for cable TV in family room & all bedrooms
- Pre-wired for telephone outlets
- Durable marble window sills
- Pre-wired for garage door opener
- Tray ceilings (per plan)
- Designer light fixtures in hall (per plan)



## PRELIMINARY STANDARD FEATURES LIST

### YOUR GOURMET KITCHEN:

- 24" x 24" porcelain tile floor
- Elegant Cabinets with Custom Crafted Flat Panel Wood Doors
- Granite Countertop
- Stainless steel double bowl sink
- Decorative fluorescent lighting
- Stainless Steel Appliance Package featuring:
  - 25 Cu. Ft. refrigerator with ice and water dispenser
  - Glass top self-cleaning electric range
  - Microwave oven
  - Multi-cycle dishwasher
  - Food waste disposal system
  - Washer and dryer hookup

### YOUR ELEGANT BATH:

- Acrylic roman tub (per plan)
- Porcelain tile floors
- Porcelain tiles in all wet areas
- Marble vanity in all bathrooms
- Elegant Vanity Cabinets with Custom Crafted Flat Panel Wood Doors
- Elongated commodes in master bathroom

### ENERGY SAVING FEATURES

- Energy efficient central air and heating system
- 50 gallon water heater
- R 30 ceiling insulation
- R 11 insulation garage wall
- R 4.2 Foil installation in exterior walls



*B*—CENTURY—  
*Breeze*

