

Aspen

Ashton Parc

2-Story | 3 Bedrooms | 2.5 Baths | Family Room | Garage



PRELIMINARY

Preliminary Artist's Concepts

LENNAR[®]

Aspen

Ashton Parc

2-Story | 3 Bedrooms | 2.5 Baths | Family Room | Garage



1,701	Sq. Ft.	A/C Area
221	Sq. Ft.	Garage
41	Sq. Ft.	Covered Entry
<hr/>		
1,963	Sq. Ft.	Total

Preliminary Artist's Concept

LENNAR®

Plans and elevations are artist's renderings only, may not accurately represent the actual condition of a home as constructed, and may contain options which are not standard on all models. We reserve the right to make changes to these floor plans, specifications, dimensions and elevations without prior notice. Stated dimensions and square footages are approximate and should not be used as representation of the home's precise or actual size. Any statement, verbal or written, regarding "under air" or "finished area" or any other description or modifier of the square footage size of any home is a shorthand description of the manner in which the square footage was estimated and should not be construed to indicate certainty. Garage or bay sizes may vary from home to home and may not accommodate all vehicles. Copyright © 2015 Lennar Corporation. Lennar and the Lennar logo are registered service marks of Lennar Corporation and/or its subsidiaries. CGC#062343. 3/15



Cedar

Ashton Parc

2-Story | 3 Bedrooms | 2.5 Baths | Family Room | Garage



PRELIMINARY

Preliminary Artist's Concepts

LENNAR[®]

Darlington

Ashton Parc

2-Story | 3 Bedrooms | 3 Baths | Family Room | Garage



PRELIMINARY

Preliminary Artist's Concepts

LENNAR®

Darlington

Ashton Parc

2-Story | 3 Bedrooms | 3 Baths | Family Room | Garage



PRELIMINARY

1,822 Sq. Ft. A/C Area
 209 Sq. Ft. Garage
 70 Sq. Ft. Covered Entry

 2,101 Sq. Ft. Total

Preliminary Artist's Concept



Plans and elevations are artist's renderings only, may not accurately represent the actual condition of a home as constructed, and may contain options which are not standard on all models. We reserve the right to make changes to these floor plans, specifications, dimensions and elevations without prior notice. Stated dimensions and square footages are approximate and should not be used as representation of the home's precise or actual size. Any statement, verbal or written, regarding "under air" or "finished area" or any other description or modifier of the square footage size of any home is a shorthand description of the manner in which the square footage was estimated and should not be construed to indicate certainty. Garage or bay sizes may vary from home to home and may not accommodate all vehicles. Copyright © 2015 Lennar Corporation. Lennar and the Lennar logo are registered service marks of Lennar Corporation and/or its subsidiaries. CGC#062343. 3/15



Evergreen

Ashton Parc

2-Story | 4 Bedrooms | 3.5 Baths | Family Room | 2-Car Garage



PRELIMINARY

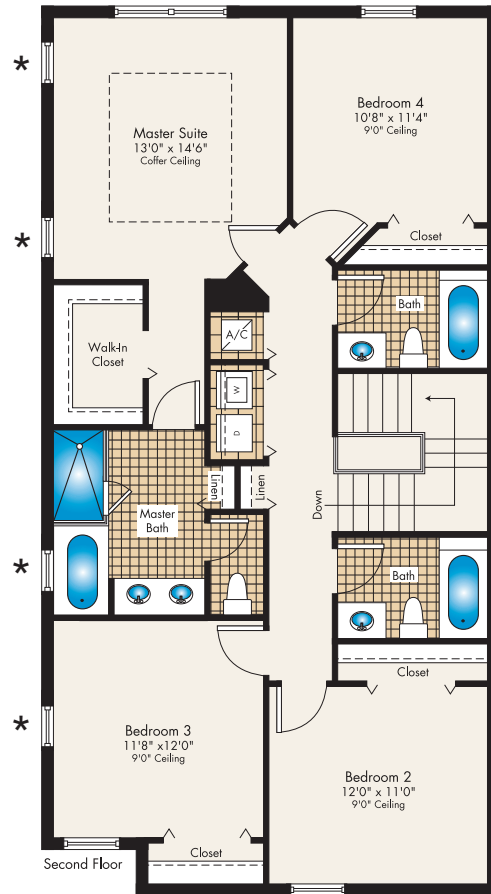
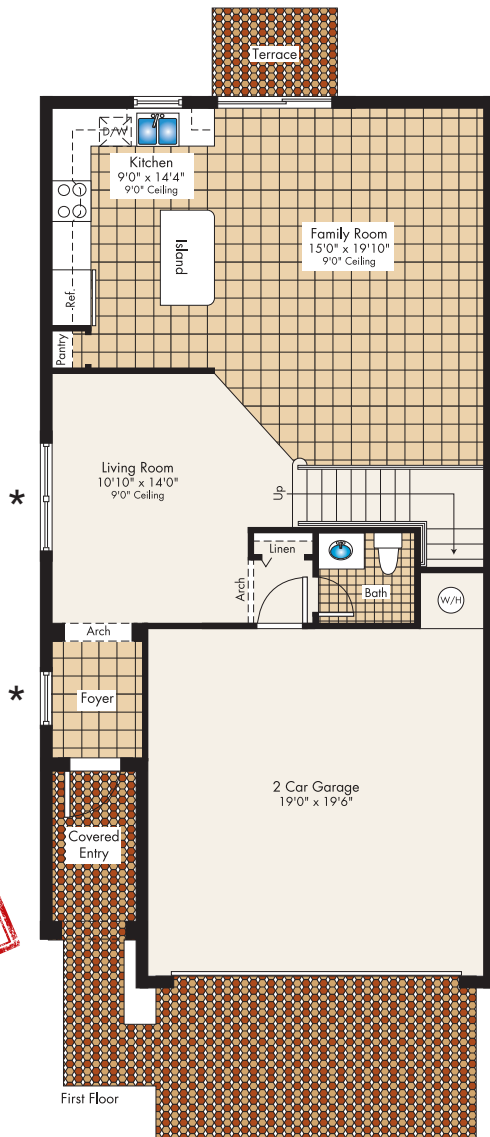
Preliminary Artist's Concepts

LENNAR®

Evergreen

Ashton Parc

2-Story | 4 Bedrooms | 3.5 Baths | Family Room | 2-Car Garage



PRELIMINARY

1,967 Sq. Ft. A/C Area
 398 Sq. Ft. Garage
 48 Sq. Ft. Covered Entry

 2,413 Sq. Ft. Total

Preliminary Artist's Concept

LENNAR

Plans and elevations are artist's renderings only, may not accurately represent the actual condition of a home as constructed, and may contain options which are not standard on all models. We reserve the right to make changes to these floor plans, specifications, dimensions and elevations without prior notice. Stated dimensions and square footages are approximate and should not be used as representation of the home's precise or actual size. Any statement, verbal or written, regarding "under air" or "finished area" or any other description or modifier of the square footage size of any home is a shorthand description of the manner in which the square footage was estimated and should not be construed to indicate certainty. Garage or bay sizes may vary from home to home and may not accommodate all vehicles. Copyright © 2015 Lennar Corporation. Lennar and the Lennar logo are registered service marks of Lennar Corporation and/or its subsidiaries. CGC#062343. 3/15



Ashton Parc

ei-Features

COMMUNITY FEATURES

- Community Swimming Pool, and Cabana
- Recreation Path with Gazebo and Benches
- Convenient to Major Thoroughfares

EXTERIOR FEATURES

- Two Story Concrete Block Construction
- Spanish-Style Concrete Tile Roof
- Brick Paver Driveway, Walkway and Front Entry
- Designer Exterior Paint in Decorator Schemes
- Code Compliant Hurricane Shutters
- Raised Panel Hurricane Code Approved Garage Door
- Automatic Garage Door Opener with Remote
- Insulated Hurricane Code Approved Raised Panel Front Entry Door with Chime
- Exterior Hose Bibbs

INTERIOR FEATURES

- Alarm System with Key Pad
- Gyp-crete™ Gypsum Flooring Underlayment
- 18"x18" Ceramic Tile in Foyer, Kitchen, Breakfast Area, Laundry Room, and Family Room in Choice of Decorator Colors
- Carpeting in Living Room, Dining Room, All Bedrooms, Hallways and Stairways with Padding in Choice of Decorator Colors
- Raised Panel Interior Doors
- Raised Panel Bi-Fold Closet Doors
- Colonial Style Baseboards and Door Casings
- Home Automation with Nexia™ Home Intelligence
 - Wireless Keypad Lock
 - Light Module
 - Programmable Thermostat for Central A/C and Heating System
 - Camera
- Lever Style Interior Door Hardware
- Textured Walls and Ceilings in Designated Areas
- Designer Quality Paint on all Walls and Ceilings
- Rocker Style Switches Throughout Home
- Category 5 Structured Wiring for Phones and Computers in all Bedrooms, Kitchen and Family Room, Home Run to Central Distribution Box
- RG6 Shielded Coaxial Television Cable in all Bedrooms and Family Room, Home Run to Central Distribution Box
- Pre-wired for Ceiling Fans in Family Room and All Bedrooms
- Decorative Marble Window Sills

- Electric Water Heater (per plan)
- Central Air Conditioning and Heating System with Programmable Thermostat
- Vinyl-Clad Ventilated Closet Shelving

KITCHEN FEATURES

- Quality Stainless Steel Appliance Package Featuring:
 - Side-by-Side Refrigerator with Ice and Water Dispenser in Door
 - Ceramic Top Range with Self Cleaning Oven
 - Energy Saving Dishwasher
 - Over-the-range Microwave with Ventilation System
- 36" Wood Finish Cabinetry with Brushed Nickel Hardware
- Granite Countertops in Choice of Standard Colors
- Stainless Steel Undermount Kitchen Sink
- Designer Brushed Nickel Single Lever Pull-out Faucet
- Food Waste Disposal
- Recessed Overhead Lighting

BATH FEATURES

- Wood Finish Vanities with Brushed Nickel Hardware (per plan)
- Single Vanity in Powder Room
- Cultured Marble Vanity Top with Integral Double Bowl Sinks in Master Bath
- Recessed Lighting in Master Bathroom
- Cultured Marble Vanity Top with Integral Sink in Secondary Bathrooms
- Clear Glass Shower Enclosure in Master Bathroom
- Elongated Toilets
- 12"x12" Ceramic Floor Tile
- Designer Style Lighting over Vanities in Secondary Bathrooms
- Mirrored Medicine Cabinet (per plan)
- Full Width Vanity Mirrors
- Exhaust Fan
- Decorator Faucets

LAUNDRY ROOM FEATURES

- Large Capacity Washer
- Large Capacity Dryer
- Ventilated Wire Shelving above Washer/Dryer

LENNAR®

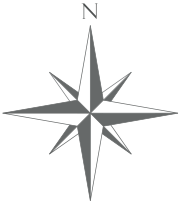


The specific features in a home may vary from home to home and from community to community. We reserve the right to substitute equipment, material, appliances and brand names with items of equal or higher, in our sole opinion, value. Color and size variations may occur. The prices of our homes, included features, and available locations are subject to change without notice. Please see the actual home purchase agreement for additional information, disclosures and disclaimers relating to the home and its features. Void where prohibited by law. Copyright © 2015 Lennar Corporation. Lennar and the Lennar logo are registered service marks of Lennar Corporation and/or its subsidiaries. CGC - #062343 3/15



Ashton Parc

Overall Preliminary Site Plan



Preliminary Artist's Concept

LENNAR®

Plans and elevations are artist's renderings only, may not accurately represent the actual condition of a home as constructed, and may contain options which are not standard on all models. We reserve the right to make changes to these floor plans, specifications, dimensions and elevations without prior notice. Stated dimensions and square footages are approximate and should not be used as representation of the home's precise or actual size. Any statement, verbal or written, regarding "under air" or "finished area" or any other description or modifier of the square footage size of any home is a shorthand description of the manner in which the square footage was estimated and should not be construed to indicate certainty. Garage or bay sizes may vary from home to home and may not accommodate all vehicles. Copyright © 2015 Lennar Corporation. Lennar and the Lennar logo are registered service marks of Lennar Corporation and/or its subsidiaries. CGC#062343. 3/15



Ashton Parc

Points of Interest



SCHOOLS

1. Trade Winds Elementary
2. Lyons Creek Middle
3. Monarch High School

HOSPITALS/MEDICAL/GOVERNMENT

4. Baptist Medical Plaza At Coral Spring
5. Medical Center North Broward
6. Boca Raton Regional Hospital
7. Hillsboro Urgent Care
8. West Boca Medical Center

RECREATION AND ENTERTAINMENT

9. Butterfly world
10. Paragon Theaters
11. South Florida Railway Museum
12. Seminole Casino Coconut Creek
13. Adios Golf Club
14. Mizner Park
15. Cinemark Palace 20 & XD
16. Quiet Waters Park
17. Tradewinds Park
18. Sugar Sand Park

SHOPPING

19. Super Target
20. Promenade at Coconut Creek
21. Publix Super Market
22. Town Center at Boca Raton
23. Mission Bay Plaza

RESTAURANTS

24. Chili's Grill & Bar
25. Panera Bread
26. Carrabba's Italian Grill
27. Amici's Pizza Cafe
28. Pizza Chef Italian Bistro
29. Bonfish Grill
30. Oriental House Express

LENNAR

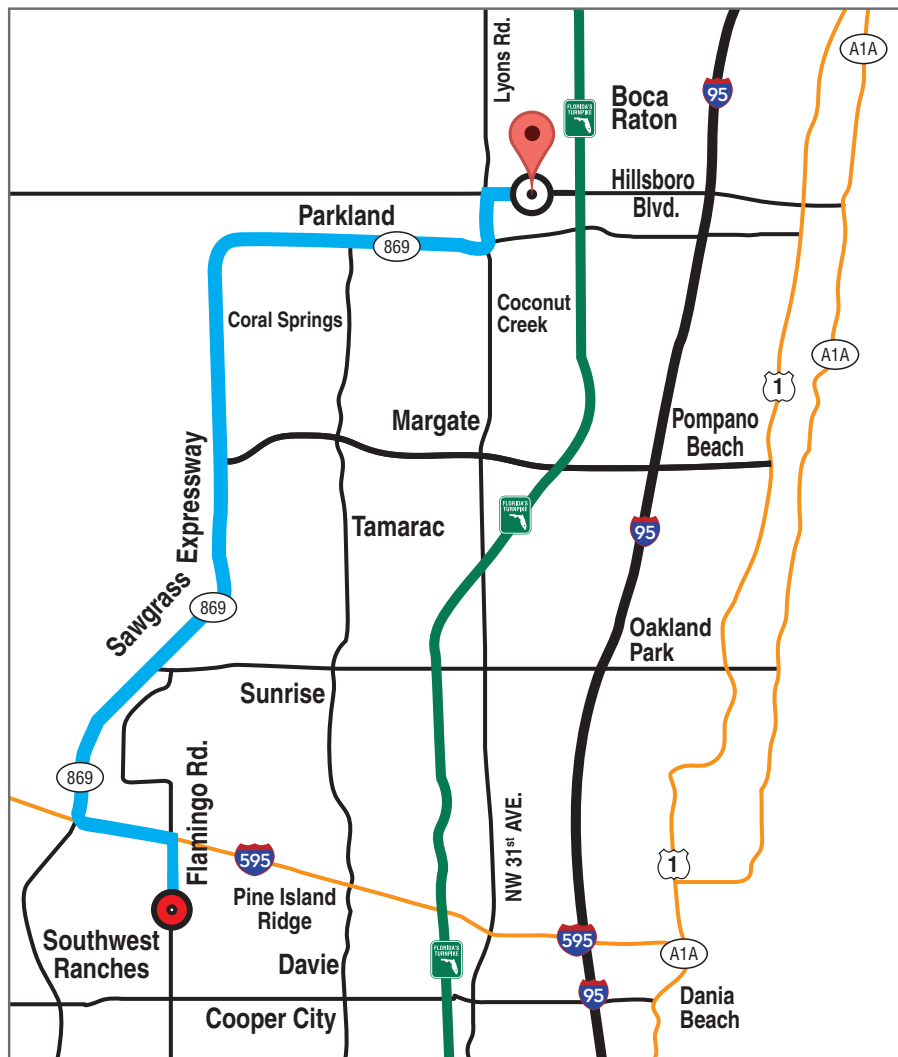
ei
EVERYTHING'S
INCLUDED
HOMES

Map is not to scale. This information is believed to be accurate, but not guaranteed. Copyright © 2015 Lennar Corporation. Lennar and the Lennar logo are registered service marks of Lennar Corporation and/or its subsidiaries. CGC - #062343 3/15



Ashton Parc

Points of Interest



VIA FL-869 N

1. Take Flamingo Rd. North to I-595 W
2. Follow I-595 W & merge right onto 869 (Sawgrass Expressway) heading North

3. Continue towards Coconut Creek, to Lyons Rd. exit.
4. Exit north onto Lyons Rd.
5. Right onto Hillsboro Blvd. & Ashton Parc will be on the right just before the Turnpike.

LENNAR

ei
EVERYTHING'S
INCLUDED
HOMES

Map is not to scale. This information is believed to be accurate, but not guaranteed. Copyright © 2015 Lennar Corporation. Lennar and the Lennar logo are registered service marks of Lennar Corporation and/or its subsidiaries. CGC - #062343 3/15

