

CosmoChic

Contemporary Condos

LAND  MARK
D O R A L

Simplistic + Functional Open Architecture & Modern Technology

Landmark, an unprecedented concept in urban-chic living. Nestled within the vibrant city of Doral, offering a cosmopolitan collection of spacious, light-filled one and two-story luxury condominium residences, as well as luxuriously appointed two and three-story townhomes designs. The architectural design elements feature open floor plans, full-volume impact resistant windows, clean-lined interiors, available skyview terraces and modern technology. Landmark residents will enjoy a grand lifestyle and a bounty of luxurious and fun-filled amenities. Landmark, the most exciting new community in the upbeat metropolitan city of Doral.



887 homes + Condos & Towns + Skyview Terraces + NextGen® + Modern Technology

ORAL REPRESENTATIONS CANNOT BE RELIED UPON AS CORRECTLY STATING REPRESENTATIONS OF THE DEVELOPER. FOR CORRECT REPRESENTATIONS, MAKE REFERENCE TO THIS BROCHURE AND TO THE DOCUMENTS REQUIRED BY SECTION 718.503, FLORIDA STATUTES, TO BE FURNISHED BY A DEVELOPER TO A BUYER OR LESSEE.

TABLE OF CONTENTS

Innovations & Success	4
ClubChic	6-7
About Doral	8-9
1 & 2-Story Condominiums	11
Condominium Site Plan	12-13
Community Site Plan	14-15
1 & 2-Story Condominium Floorplans	16-22
Features+Amenities	25-27

Acquire a 'sky-is-the-limit' lifestyle





Preliminary Artist's Concept

Innovation & Success

Lennar® is a Fortune 500 Company, listed on the prestigious New York Stock Exchange, trading under the symbol LEN. Headquartered in Miami since 1954, Lennar® is South Florida's number one homebuilder. However, our experience and reputation for excellence extends far beyond Florida.

Lennar® has been constructing quality homes for families in 18 states, including some of the nation's most sought-after locations. Lennar® also services their customers with a complete offering of financial services including mortgages, title and insurances.

Lennar® is built upon an underlying foundation of Quality, Value and Integrity, and our commitment to those values guides us to this day.

An outstanding customer experience is always our top priority. We make buying your new home easy. Our helpful associates guide homebuyers through every step of the home buying process, from the first visit to full ownership. In addition, the Lennar® Customer Care Team is available to new homeowners after move-in to ensure complete satisfaction.

LENNAR®



Actual Photo

Contemporary styling paired with sophisticated architectural details



Actual Photo





Preliminary Artist's Concept

Urban-Chic Redefined

ClubChic

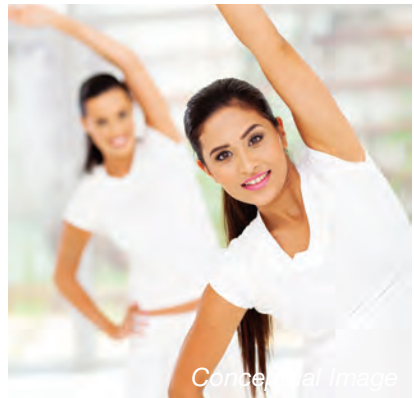
The future resort-style clubhouse will portray a grand swimming pool and spa, flanked by relaxing sundeck areas, a cutting-edge fitness center, elegant social gathering areas, open-air amphitheater, kids' water park, tennis courts, BBQ pavilion and plentiful outdoor spaces for quintessential South Florida living.



Actual Photo



Conceptual Image



Conceptual Image



Conceptual Image





Actual Photo

Photo Credit: Diario Las Americas /Alvaro Mata



Actual Photo

Photo Credit: Diario Las Americas /Alvaro Mata

The ideal Doral location & lifestyle



Actual Photo

Photo Credit: Shutterstock/FloridaStock



Doral+Lifestyle

Landmark is ideally situated near community parks, golf courses, top-rated neighborhood schools and the dynamic epicenter of Downtown Doral with its endless shopping, gourmet dining, entertainment and cultural offerings. The iconic Trump National Doral is also just minutes away. The City of Doral is conveniently located just south of Miami International Airport with quick access to all major roadways, making downtown Miami and the beaches just minutes away.





Actual Photo

Impact resistant windows and glass doors



Actual Photo

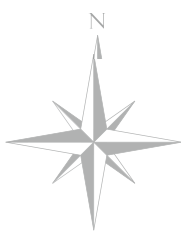
CosmoChic

1 & 2-Story Contemporary
Condos



Preliminary Artist's Concept

Sophisticated architecture designed for today's modern way of life



 1st Floor Condos



Preliminary Artist's Concept

Site plans and community maps are conceptual in nature and are merely an artist's rendition. These maps are solely for illustrative purposes and should never be relied upon. THE PAST, PRESENT, FUTURE OR PROPOSED ROADS, EASEMENTS, LAND USES, CONDITIONS, PLAT MAPS, LOT SIZES OR LAYOUTS, ZONING, UTILITIES, DRAINAGE, LAND CONDITIONS, OR DEVELOPMENT OF ANY TYPE WHATSOEVER, WHETHER REFLECTED ON THE SITE PLAN OR MAP, OR WHETHER OUTSIDE THE BOUNDARIES OF THE SITE PLAN OR MAP, MAY NOT BE SHOWN OR MAY BE INCOMPLETE OR INACCURATE. THE PRESENT, FUTURE OR PROPOSED ROADS, EASEMENTS, LAND USES, CONDITIONS, PLAT MAPS, LOT SIZES OR LAYOUTS, ZONING, DRAINAGE, LAND CONDITIONS, OR DEVELOPMENT OF ANY TYPE MAY OR MAY NOT CHANGE IN THE FUTURE. IT IS NOT UNCOMMON THAT ANY OF THE FOREGOING CAN CHANGE WITHOUT NOTICE TO YOU. YOU SHOULD NEVER RELY ON THE ACCURACY OF THIS MAP IN MAKING ANY DECISIONS RELATIVE TO PURCHASING ANY PROPERTY. We reserve the right to make changes at any time without notice. Select homesites have premiums. Proposed amenities for the community are subject to changes, substitutions and/or deletions without notice. Lennar makes no representation or guarantee that the community or any amenities will be built out as currently planned. Copyright © 2016 Lennar Corporation. Lennar and the Lennar logo are registered service marks of Lennar Corporation and/or its subsidiaries. CGC - 062343. 02/16



2nd Floor Condos

Preliminary Artist's Concept

Site plans and community maps are conceptual in nature and are merely an artist's rendition. These maps are solely for illustrative purposes and should never be relied upon. THE PAST, PRESENT, FUTURE OR PROPOSED ROADS, EASEMENTS, LAND USES, CONDITIONS, PLAT MAPS, LOT SIZES OR LAYOUTS, ZONING, UTILITIES, DRAINAGE, LAND CONDITIONS, OR DEVELOPMENT OF ANY TYPE WHATSOEVER, WHETHER REFLECTED ON THE SITE PLAN OR MAP, OR WHETHER OUTSIDE THE BOUNDARIES OF THE SITE PLAN OR MAP, MAY NOT BE SHOWN OR MAY BE INCOMPLETE OR INACCURATE. THE PRESENT, FUTURE OR PROPOSED ROADS, EASEMENTS, LAND USES, CONDITIONS, PLAT MAPS, LOT SIZES OR LAYOUTS, ZONING, DRAINAGE, LAND CONDITIONS, OR DEVELOPMENT OF ANY TYPE MAY OR MAY NOT CHANGE IN THE FUTURE. IT IS NOT UNCOMMON THAT ANY OF THE FOREGOING CAN CHANGE WITHOUT NOTICE TO YOU. YOU SHOULD NEVER RELY ON THE ACCURACY OF THIS MAP IN MAKING ANY DECISIONS RELATIVE TO PURCHASING ANY PROPERTY. We reserve the right to make changes at any time without notice. Select homesites have premiums. Proposed amenities for the community are subject to changes, substitutions and/or deletions without notice. Lennar makes no representation or guarantee that the community or any amenities will be built out as currently planned. Copyright © 2016 Lennar Corporation. Lennar and the Lennar logo are registered service marks of Lennar Corporation and/or its subsidiaries. CGC - 062343. 02/16





DORAL ISLES
A LENNAR COMMUNITY

DORAL ISLES
A LENNAR COMMUNITY

FUTURE DEVELOPMENT BY OTHER

FPL EASEMENT

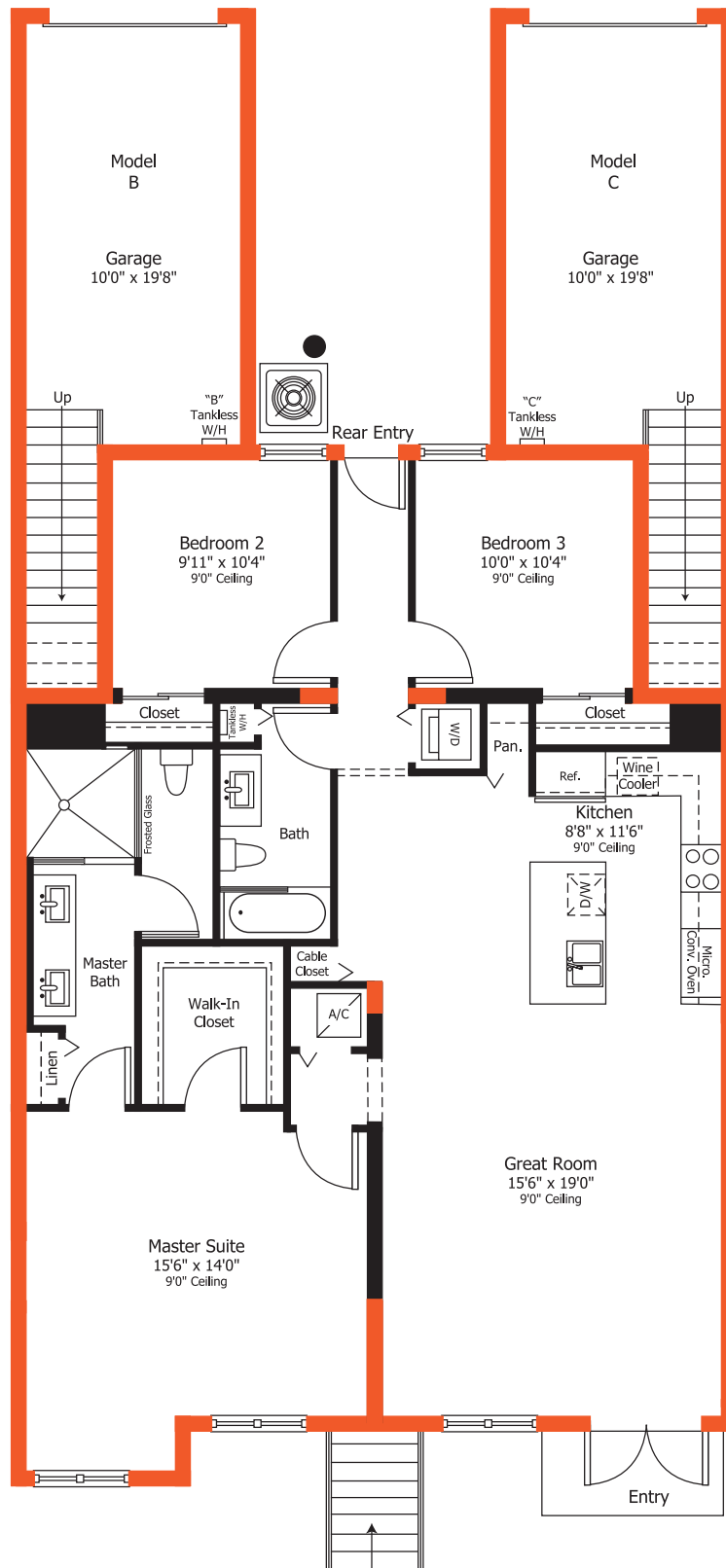


Townhouses		
	20'X58'	323 units
	22'X85'	92 units
	22'X100'	217 units
Multi-family		
	3 Bed:	255 units



Preliminary Artist's Concept

Site plans and community maps are conceptual in nature and are merely an artist's rendition. These maps are solely for illustrative purposes and should never be relied upon. THE PAST, PRESENT, FUTURE OR PROPOSED ROADS, EASEMENTS, LAND USES, CONDITIONS, PLAT MAPS, LOT SIZES OR LAYOUTS, ZONING, UTILITIES, DRAINAGE, LAND CONDITIONS, OR DEVELOPMENT OF ANY TYPE WHATSOEVER, WHETHER REFLECTED ON THE SITE PLAN OR MAP, OR WHETHER OUTSIDE THE BOUNDARIES OF THE SITE PLAN OR MAP, MAY NOT BE SHOWN OR MAY BE INCOMPLETE OR INACCURATE. THE PRESENT, FUTURE OR PROPOSED ROADS, EASEMENTS, LAND USES, CONDITIONS, PLAT MAPS, LOT SIZES OR LAYOUTS, ZONING, DRAINAGE, LAND CONDITIONS, OR DEVELOPMENT OF ANY TYPE MAY OR MAY NOT CHANGE IN THE FUTURE. IT IS NOT UNCOMMON THAT ANY OF THE FOREGOING CAN CHANGE WITHOUT NOTICE TO YOU. YOU SHOULD NEVER RELY ON THE ACCURACY OF THIS MAP IN MAKING ANY DECISIONS RELATIVE TO PURCHASING ANY PROPERTY. We reserve the right to make changes at any time without notice. Select homesites have premiums. Proposed amenities for the community are subject to changes, substitutions and/or deletions without notice. Lennar makes no representation or guarantee that the community or any amenities will be built out as currently planned. Copyright © 2016 Lennar Corporation. Lennar and the Lennar logo are registered service marks of Lennar Corporation and/or its subsidiaries. CGC - 062343. 02/16



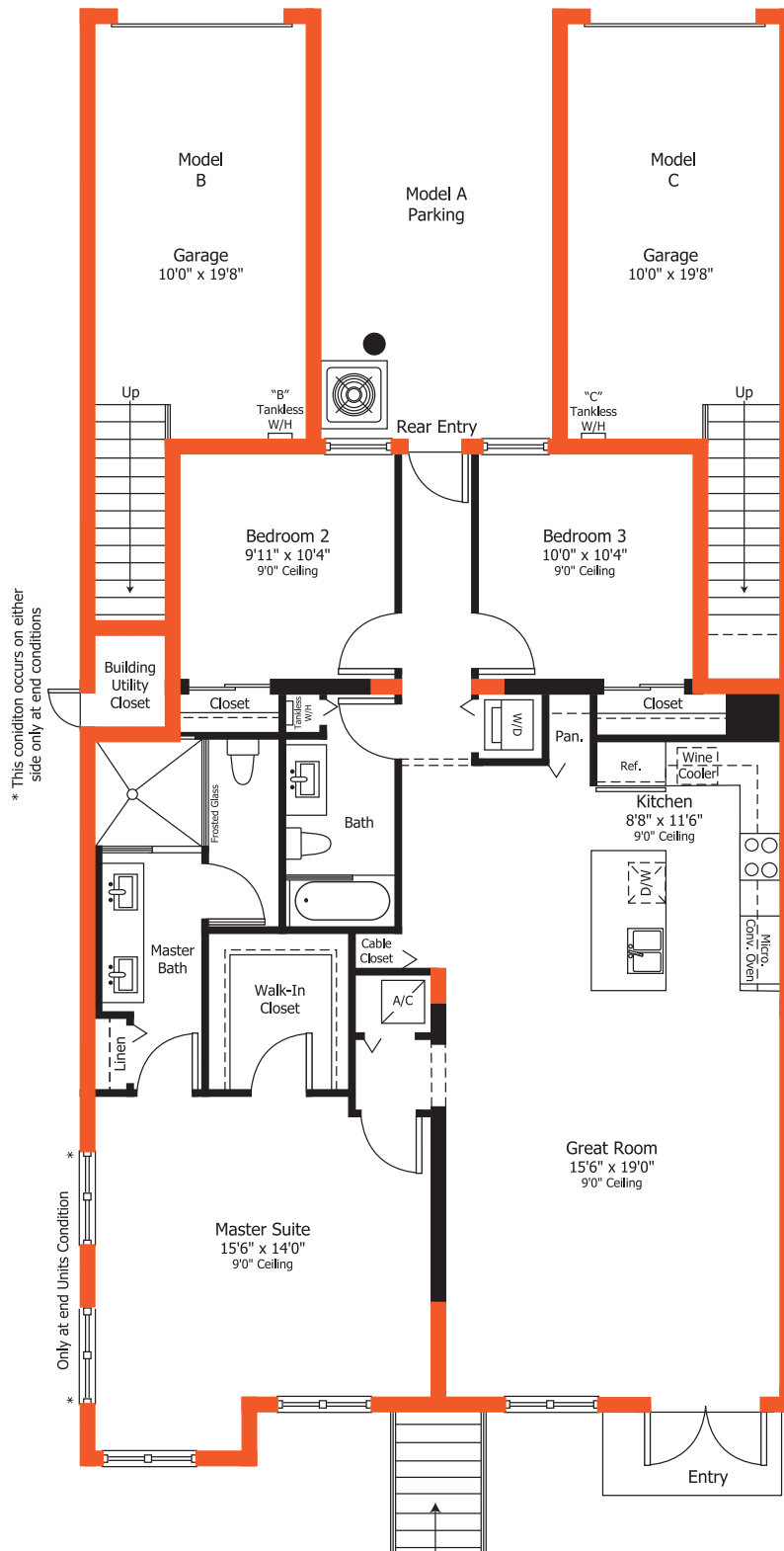
1,360 sq. ft. A/C Area



Preliminary Artist's Concept

ORAL REPRESENTATION CANNOT BE RELIED UPON AS CORRECTLY STATING REPRESENTATIONS OF THE DEVELOPER. FOR CORRECT REPRESENTATIONS, MAKE REFERENCE TO THE BROCHURE AND TO THE DOCUMENTS REQUIRED BY SECTION 718.503 FLORIDA STATUTES, TO BE FURNISHED BY A DEVELOPER TO A BUYER OR LESSEE.

Plans and elevations are artist's renderings and may not accurately represent the actual condition of a home as constructed, and may contain options which are not standard on all models. Lennar® reserves the right to make changes to these floor plans, specifications, dimensions and elevations without prior notice. Stated dimensions and square footage are approximate and should not be used as representation of the home's precise or actual size. Any statement, verbal or written, regarding "under air" or "finished area" or any other description or modifier of the square footage size of any home is a shorthand description of the manner in which the square footage was estimated and should not be construed to indicate certainty. See a Lennar® new home consultant for further information. Garage sizes may vary from home to home and may not accommodate all vehicles. Copyright © 2015 Lennar® Corporation. Lennar® and the Lennar® logo are registered service marks of Lennar® Corporation and/or its subsidiaries. CGC - 062343. 02/16



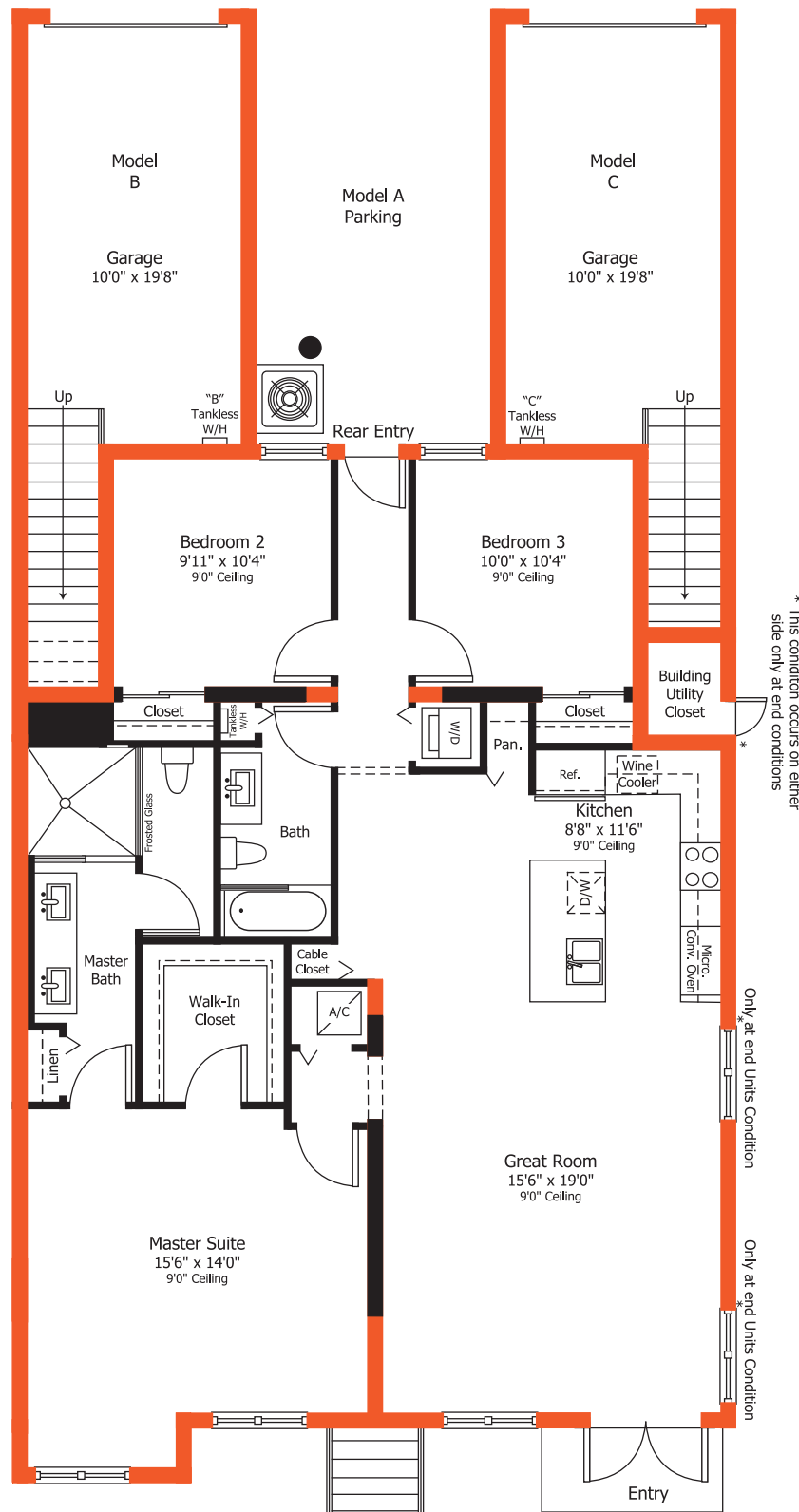
1,350 sq. ft. A/C Area

Preliminary Artist's Concept

ORAL REPRESENTATION CANNOT BE RELIED UPON AS CORRECTLY STATING REPRESENTATIONS OF THE DEVELOPER. FOR CORRECT REPRESENTATIONS, MAKE REFERENCE TO THE BROCHURE AND TO THE DOCUMENTS REQUIRED BY SECTION 718.503 FLORIDA STATUTES, TO BE FURNISHED BY A DEVELOPER TO A BUYER OR LESSEE.

Plans and elevations are artist's renderings and may not accurately represent the actual condition of a home as constructed, and may contain options which are not standard on all models. Lennar® reserves the right to make changes to these floor plans, specifications, dimensions and elevations without prior notice. Stated dimensions and square footage are approximate and should not be used as representation of the home's precise or actual size. Any statement, verbal or written, regarding "under air" or "finished area" or any other description or modifier of the square footage size of any home is a shorthand description of the manner in which the square footage was estimated and should not be construed to indicate certainty. See a Lennar® new home consultant for further information. Garage sizes may vary from home to home and may not accommodate all vehicles. Copyright © 2015 Lennar® Corporation. Lennar® and the Lennar® logo are registered service marks of Lennar® Corporation and/or its subsidiaries. CGC - 062343, 02/16





1,350 sq. ft. A/C Area



Preliminary Artist's Concept

ORAL REPRESENTATION CANNOT BE RELIED UPON AS CORRECTLY STATING REPRESENTATIONS OF THE DEVELOPER. FOR CORRECT REPRESENTATIONS, MAKE REFERENCE TO THE BROCHURE AND TO THE DOCUMENTS REQUIRED BY SECTION 718.503 FLORIDA STATUTES, TO BE FURNISHED BY A DEVELOPER TO A BUYER OR LESSEE.

Plans and elevations are artist's renderings and may not accurately represent the actual condition of a home as constructed, and may contain options which are not standard on all models. Lennar® reserves the right to make changes to these floor plans, specifications, dimensions and elevations without prior notice. Stated dimensions and square footage are approximate and should not be used as representation of the home's precise or actual size. Any statement, verbal or written, regarding "under air" or "finished area" or any other description or modifier of the square footage size of any home is a shorthand description of the manner in which the square footage was estimated and should not be construed to indicate certainty. See a Lennar® new home consultant for further information. Garage sizes may vary from home to home and may not accommodate all vehicles. Copyright © 2015 Lennar® Corporation. Lennar® and the Lennar® logo are registered service marks of Lennar® Corporation and/or its subsidiaries. CGC - 062343. 02/16



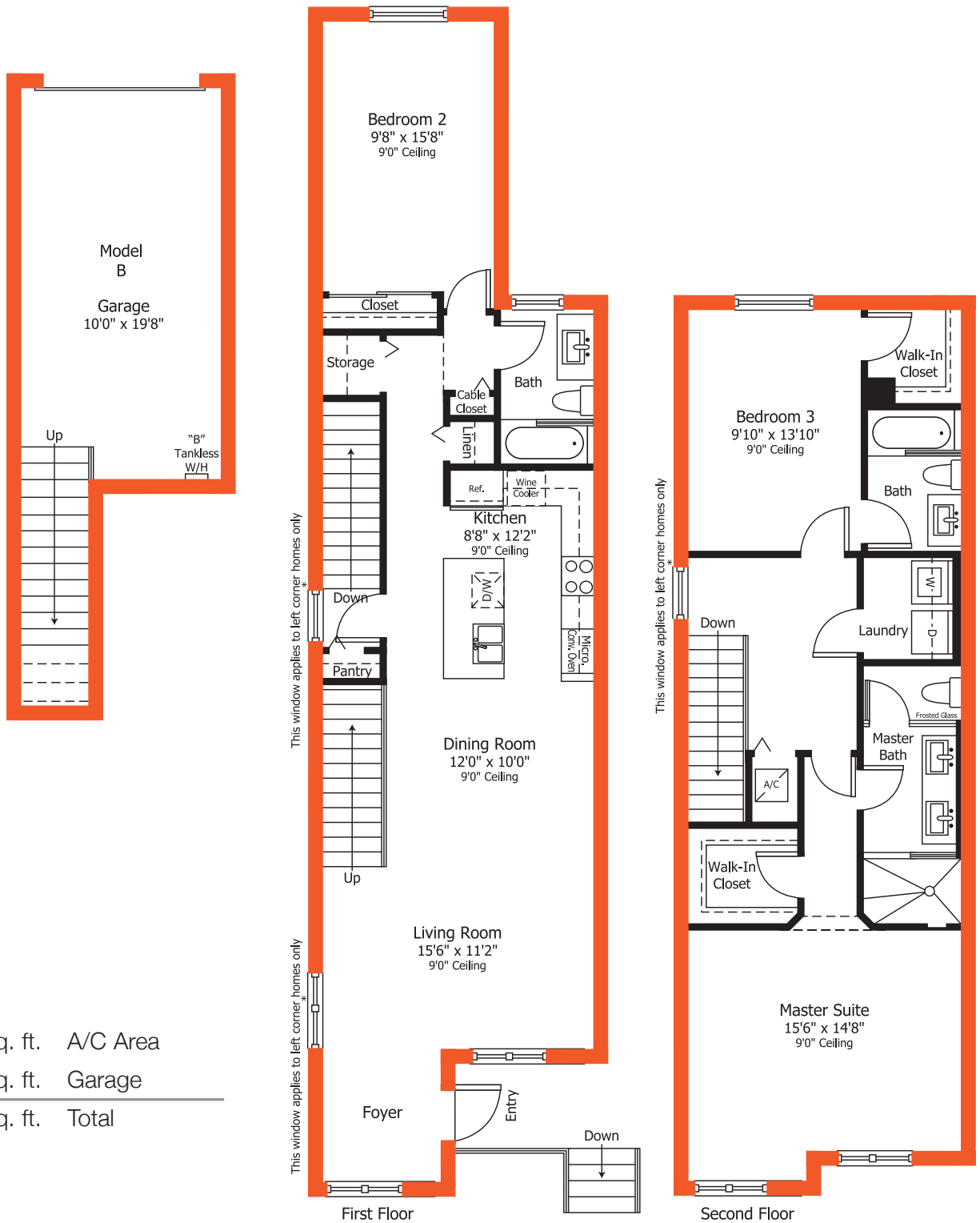
1,587 sq. ft.	A/C Area
234 sq. ft.	Garage
<hr/>	
1,821 sq. ft.	Total

Preliminary Artist's Concept

ORAL REPRESENTATION CANNOT BE RELIED UPON AS CORRECTLY STATING REPRESENTATIONS OF THE DEVELOPER. FOR CORRECT REPRESENTATIONS, MAKE REFERENCE TO THE BROCHURE AND TO THE DOCUMENTS REQUIRED BY SECTION 718.503 FLORIDA STATUTES, TO BE FURNISHED BY A DEVELOPER TO A BUYER OR LESSEE.

Plans and elevations are artist's renderings and may not accurately represent the actual condition of a home as constructed, and may contain options which are not standard on all models. Lennar® reserves the right to make changes to these floor plans, specifications, dimensions and elevations without prior notice. Stated dimensions and square footage are approximate and should not be used as representation of the home's precise or actual size. Any statement, verbal or written, regarding "under air" or "finished area" or any other description or modifier of the square footage size of any home is a shorthand description of the manner in which the square footage was estimated and should not be construed to indicate certainty. See a Lennar® new home consultant for further information. Garage sizes may vary from home to home and may not accommodate all vehicles. Copyright © 2015 Lennar® Corporation. Lennar® and the Lennar® logo are registered service marks of Lennar® Corporation and/or its subsidiaries. CGC - 062343. 02/16





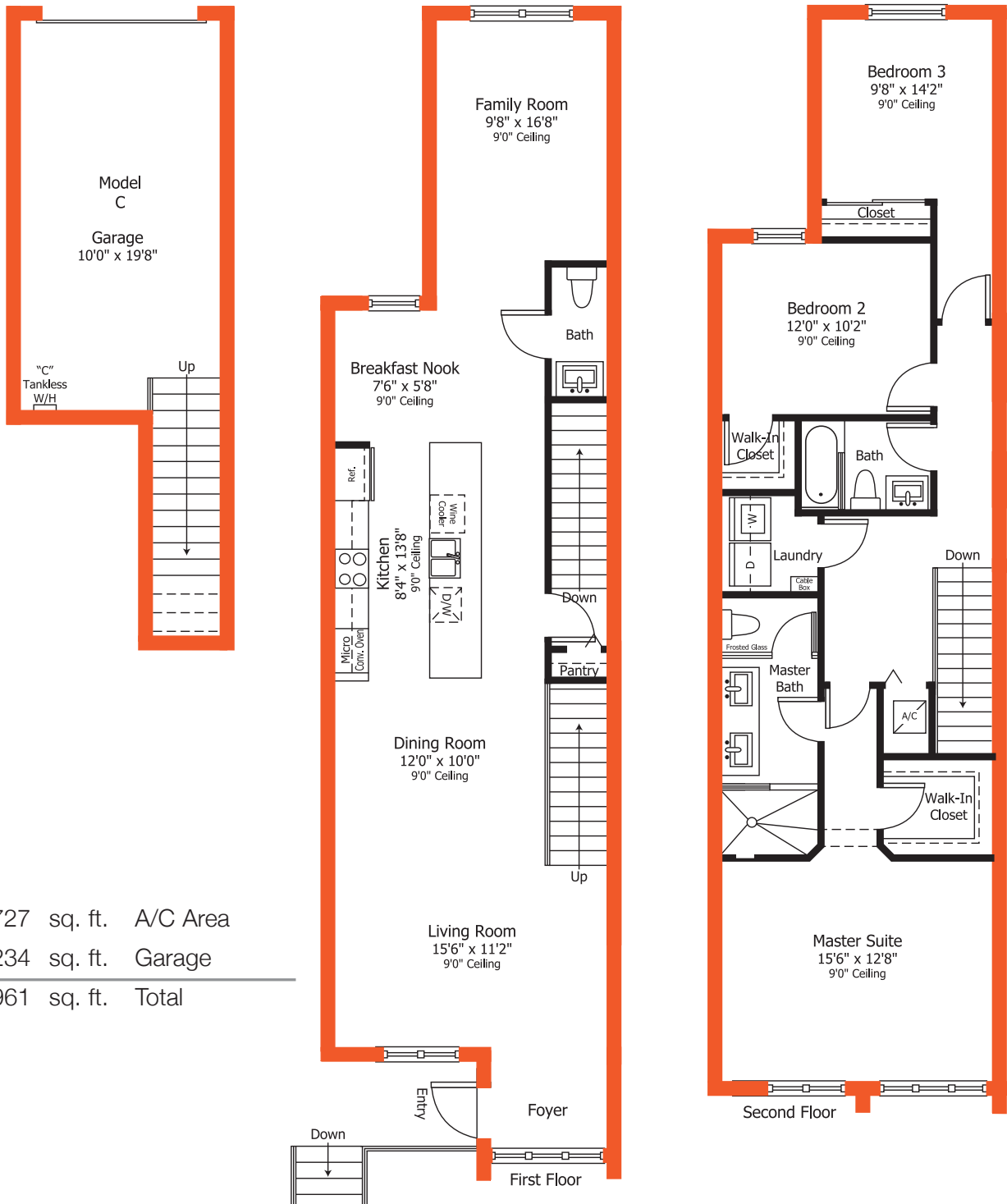
1,587	sq. ft.	A/C Area
234	sq. ft.	Garage
<hr/>		
1,821	sq. ft.	Total



Preliminary Artist's Concept

ORAL REPRESENTATION CANNOT BE RELIED UPON AS CORRECTLY STATING REPRESENTATIONS OF THE DEVELOPER. FOR CORRECT REPRESENTATIONS, MAKE REFERENCE TO THE BROCHURE AND TO THE DOCUMENTS REQUIRED BY SECTION 718.503 FLORIDA STATUTES, TO BE FURNISHED BY A DEVELOPER TO A BUYER OR LESSEE.

Plans and elevations are artist's renderings and may not accurately represent the actual condition of a home as constructed, and may contain options which are not standard on all models. Lennar® reserves the right to make changes to these floor plans, specifications, dimensions and elevations without prior notice. Stated dimensions and square footage are approximate and should not be used as representation of the home's precise or actual size. Any statement, verbal or written, regarding "under air" or "finished area" or any other description or modifier of the square footage size of any home is a shorthand description of the manner in which the square footage was estimated and should not be construed to indicate certainty. See a Lennar® new home consultant for further information. Garage sizes may vary from home to home and may not accommodate all vehicles. Copyright © 2015 Lennar® Corporation. Lennar® and the Lennar® logo are registered service marks of Lennar® Corporation and/or its subsidiaries. CGC - 062343. 02/16



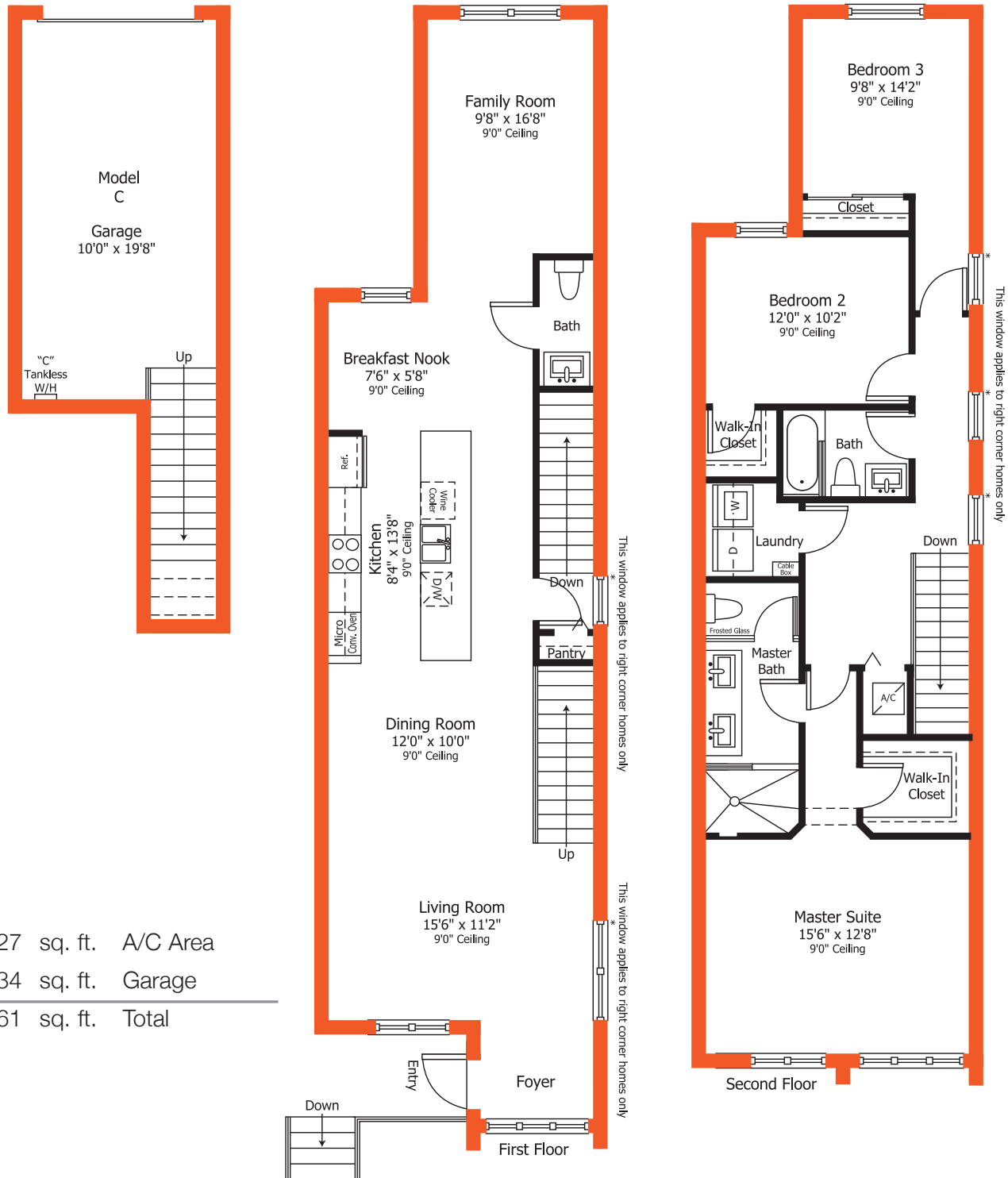
1,727	sq. ft.	A/C Area
234	sq. ft.	Garage
<hr/>		
1,961	sq. ft.	Total

Preliminary Artist's Concept

ORAL REPRESENTATION CANNOT BE RELIED UPON AS CORRECTLY STATING REPRESENTATIONS OF THE DEVELOPER. FOR CORRECT REPRESENTATIONS, MAKE REFERENCE TO THE BROCHURE AND TO THE DOCUMENTS REQUIRED BY SECTION 718.503 FLORIDA STATUTES, TO BE FURNISHED BY A DEVELOPER TO A BUYER OR LESSEE.

Plans and elevations are artist's renderings and may not accurately represent the actual condition of a home as constructed, and may contain options which are not standard on all models. Lennar® reserves the right to make changes to these floor plans, specifications, dimensions and elevations without prior notice. Stated dimensions and square footage are approximate and should not be used as representation of the home's precise or actual size. Any statement, verbal or written, regarding "under air" or "finished area" or any other description or modifier of the square footage size of any home is a shorthand description of the manner in which the square footage was estimated and should not be construed to indicate certainty. See a Lennar® new home consultant for further information. Garage sizes may vary from home to home and may not accommodate all vehicles. Copyright © 2015 Lennar® Corporation. Lennar® and the Lennar® logo are registered service marks of Lennar® Corporation and/or its subsidiaries. CGC - 062343. 02/16





1,727 sq. ft.	A/C Area
234 sq. ft.	Garage
<hr/>	
1,961 sq. ft.	Total



Preliminary Artist's Concept

ORAL REPRESENTATION CANNOT BE RELIED UPON AS CORRECTLY STATING REPRESENTATIONS OF THE DEVELOPER. FOR CORRECT REPRESENTATIONS, MAKE REFERENCE TO THE BROCHURE AND TO THE DOCUMENTS REQUIRED BY SECTION 718.503 FLORIDA STATUTES, TO BE FURNISHED BY A DEVELOPER TO A BUYER OR LESSEE.

Plans and elevations are artist's renderings and may not accurately represent the actual condition of a home as constructed, and may contain options which are not standard on all models. Lennar® reserves the right to make changes to these floor plans, specifications, dimensions and elevations without prior notice. Stated dimensions and square footage are approximate and should not be used as representation of the home's precise or actual size. Any statement, verbal or written, regarding "under air" or "finished area" or any other description or modifier of the square footage size of any home is a shorthand description of the manner in which the square footage was estimated and should not be construed to indicate certainty. See a Lennar® new home consultant for further information. Garage sizes may vary from home to home and may not accommodate all vehicles. Copyright © 2015 Lennar® Corporation. Lennar® and the Lennar® logo are registered service marks of Lennar® Corporation and/or its subsidiaries. CGC - 062343. 02/16



Actual Photo

Elegant function meets modern technology



Conceptual Image



Actual Photo

Choose to live an unprecedented level of luxury



Actual Photo



Conceptual Image

CosmoChic

ei-Features



GENERAL FEATURES:

- Quality Concrete Block Construction
- Precast Concrete Floors
- Flat Concrete Roof
- Elegant Covered Entries (per plan)
- Impact Resistant Windows and Glass Doors
- Brick Paver Driveway, Entry Walk and Patio (per plan)
- Exterior Paint in Contemporary Schemes
- Hurricane Resistant Steel Garage Doors (per plan)
- Automatic Garage Door Opener with Remote (per plan)
- Designer Landscape
- Contemporary-Style Exterior Lighting
- Front Door Chime

INTERIOR FEATURES:

- Advanced Savant™ Wireless Technology System Including:
 - Savant Smart Host and Controller
 - Lighting Processor with 2 WiFi Keypads to Control Lighting in Two Areas
 - Wireless, Programmable Thermostat for Central A/C and Heating System
 - Integrated IP Camera
 - Controlled Schlage® Front Door Lock
- Air-Conditioning and Heating System
- Plush Stain Resistant Carpet in a Choice of Designer Colors
- 24”x24” Porcelain Tile in All Main Living Areas in Choice of Designer Colors
- Contemporary-Style Recessed Hi-Hats Throughout Home
- Contemporary-Style Stainless Steel Stair Railings and Handrail (per plan)
- Decorative Contemporary Wall Sconces In Stairway (per plan)
- Contemporary-Style Interior Door Hardware
- Smooth Finish Walls and Ceilings
- Rocker-Style Light Switches
- Designer Base Boards and Casings
- Category 5e Structured Wiring for Phone in Kitchen Only. Family Room and All Bedrooms Wired for Cable and Internet, Home Run to Central Distribution Panel
- RG6 Shielded Coaxial Television Cable in All Bedrooms and Family Room, Home Run to Central Distribution Panel
- Pre-Wired for Ceiling Fan in all Bedrooms and Family Room (per plan)

- Tankless Water Heater
- Carbon Monoxide and Smoke Detectors Throughout

KITCHEN FEATURES:

- Deluxe Stainless Steel Appliance Package Featuring:
 - French Door Refrigerator with Ice and Water in Door
 - Drop-in Glass Top Electric Cooktop
 - Built In Combo Convection Microwave/Convection Wall Oven
 - Energy Efficient Dishwasher
 - Contemporary Stainless Steel Recirculating Hood
 - Deluxe Under-Counter Wine Chiller
- Upgraded 36” Contemporary-Style Flat Panel Cabinets in Choice of White Gloss, Wood Finish Espresso, or a combination of both. You choose! With Integrated Stainless Steel Handles
- Under-Cabinet Lighting
- Kitchen Pantry (per plan)
- Contemporary White Quartz Kitchen Countertops with Square Edge
- Choice of Contemporary Kitchen Backsplash



The specific features, amenities, floor plans, elevations, square footage, and designs vary per plan and community and are subject to changes or substitution without notice. We reserve the right to substitute equipment, material, appliances and brand names with items of equal or higher, in our sole opinion, value. Color and size variations may occur. The prices of our homes, included features, and available locations are subject to change without notice. Please see the actual home purchase agreement for additional information, disclosures and disclaimers relating to the home and its features. Void where prohibited by law. Proposed amenities for the community are subject to changes, substitutions and/or deletions without notice. Lennar makes no representation or guarantee that the community or any amenities will be built out as currently planned. Copyright © 2016 Lennar Corporation. Lennar, the Lennar logo, and the Everything's Included logo are registered service marks of Lennar Corporation and/or its subsidiaries. CGC - 062343. 02/16

- Stainless Steel Rectangular Undermount Kitchen Sink
- Contemporary-Style Kitchen Faucet with Pull Out Spray
- Food Waste Disposer
- Recessed Contemporary-Style Hi-Hat Lighting

BATH FEATURES:

- All Baths Include Contemporary White Quartz Countertops with 4" Backsplash
- Master Bath Includes Contemporary White Gloss Floating Vanities with Vessel Sink

- Powder Bath Includes Contemporary White Gloss Floating Vanity with Vessel Sink
- Secondary Baths Include Contemporary White Gloss Vanity with Undermount Sink
- Master Shower Includes "Rain Style" Shower Head and Elegant Contemporary Style Tiles Throughout
- Contemporary-Style Chrome Faucets in All Baths
- High Gloss White Bathtub in Secondary Baths (per plan)
- Contemporary-Style Rectangular Vanity Mirrors

- All baths Include Contemporary One-Piece Toilets
- 24"x24" Matte Porcelain Tile Flooring
- Exhaust Fans in all Bathrooms

LAUNDRY ROOM:

- 24"x24" Porcelain Tile Flooring
- Large Capacity Washer and Dryer (Some Plans Include Stackable System)



The specific features, amenities, floor plans, elevations, square footage, and designs vary per plan and community and are subject to changes or substitution without notice. We reserve the right to substitute equipment, material, appliances and brand names with items of equal or higher, in our sole opinion, value. Color and size variations may occur. The prices of our homes, included features, and available locations are subject to change without notice. Please see the actual home purchase agreement for additional information, disclosures and disclaimers relating to the home and its features. Void where prohibited by law. Proposed amenities for the community are subject to changes, substitutions and/or deletions without notice. Lennar makes no representation or guarantee that the community or any amenities will be built out as currently planned. Copyright © 2016 Lennar Corporation. Lennar, the Lennar logo, and the Everything's Included logo are registered service marks of Lennar Corporation and/or its subsidiaries. CGC - 062343. 02/16



Realtors® Welcome.

Elevations/renderings are conceptual in nature and are merely an artist's rendition and may contain options or features that are not standard on all models. Photographs depict the community as of the dates taken. Pictures are conceptual in nature and are merely an artist's rendition. These images/pictures are solely for illustrative purposes and should never be relied upon. The specific features, amenities, floor plans, elevations, square footage, available locations and designs vary per plan and community and are subject to changes or substitution without notice. Please see the actual home purchase agreement for additional information, disclosures and disclaimers relating to the home and its features. Copyright® 2015 Lennar® Corporation. Lennar®, the Lennar® logo, and the Everything's Included® logo are registered service marks of Lennar® Corporation and/or its subsidiaries. CGC - 062343. 02/16