

CosmoChic

2 & 3-Story Townhomes

LAND  MARK
D O R A L

Simplistic + Functional Open Architecture & Modern Technology

Landmark, an unprecedented concept in urban-chic living. Nestled within the vibrant city of Doral, offering a cosmopolitan collection of spacious, light-filled one and two-story luxury condominium residences, as well as luxuriously appointed two and three-story townhomes designs. The architectural design elements feature open floor plans, full-volume impact resistant windows, clean-lined interiors, available sky view terraces and modern technology.

Landmark residents will enjoy a grand lifestyle and a bounty of luxurious and fun-filled amenities.

Landmark, the most exciting new community in the upbeat metropolitan city of Doral.



887 homes + Condos & Towns + Skyview Terraces + NextGen® + Modern Technology

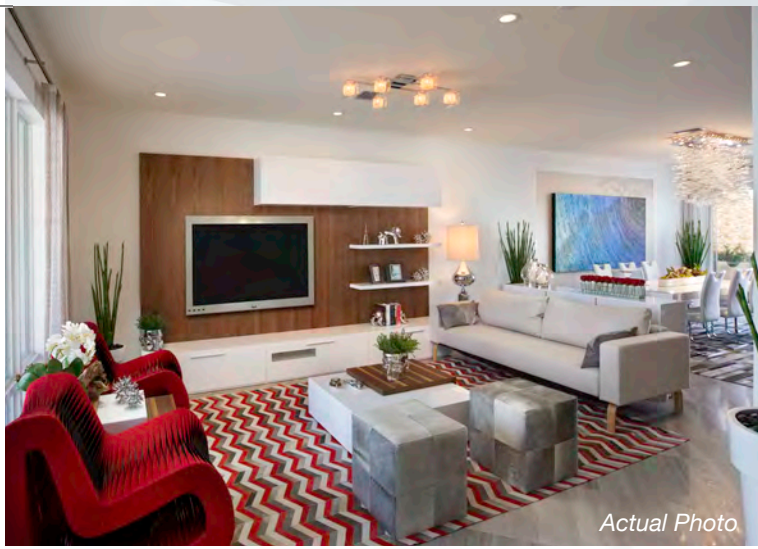
TABLE OF CONTENTS

ClubChic	8-9
About Doral	10-11
Innovations & Success	12
2-Story Townhomes	13-28
Site Plan	29-31
3-Story Townhomes	32-40
Features+Amenities	41-47

Acquire a 'sky-is-the-limit' lifestyle



Actual Photo





Preliminary Artist's Concept

Spacious
Two-Story Townhomes &
Skyview Terraces





Preliminary Artist's Concept

Innovative Three-Story Townhomes & Skyview Terraces



Actual Photo



Conceptual Image



Actual Photo





Preliminary Artist's Concept

Urban-Chic Redefined

ClubChic

The future resort-style clubhouse will portray a grand swimming pool and spa, flanked by relaxing sundeck areas, a cutting-edge fitness center, elegant social gathering areas, open-air amphitheater, kids' water park, tennis courts, BBQ pavilion and plentiful outdoor spaces for quintessential South Florida living.



Actual Photo



Conceptual Image



Conceptual Image



Conceptual Image





Conceptual Image

Photo Credit: Diario Las Americas /Alvaro Mata



Conceptual Image

Photo Credit: Diario Las Americas /Alvaro Mata

Doral+Lifestyle

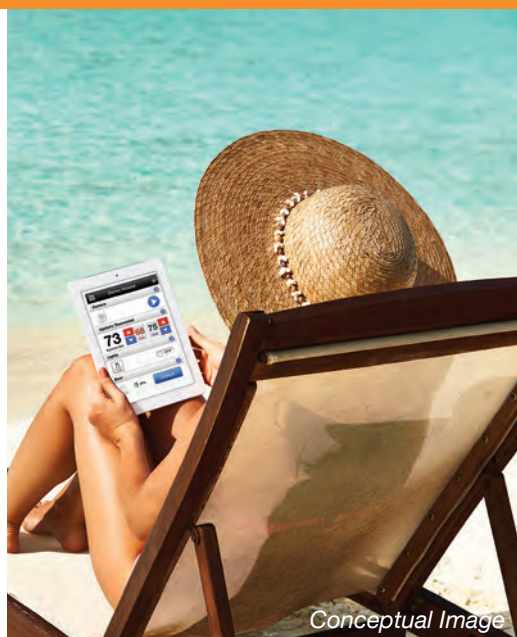


Actual Photo

Landmark is ideally situated near community parks, golf courses, top-rated neighborhood schools and the dynamic epicenter of Downtown Doral with its endless shopping, gourmet dining, entertainment and cultural offerings. The iconic Trump National Doral is also just minutes away. The City of Doral is conveniently located just south of Miami International Airport with quick access to all major roadways, making downtown Miami and the beaches just minutes away.



Modern simplicity, urban elegance. Welcome to the Landmark lifestyle.





Preliminary Artist's Concept

Welcome to Landmark by Lennar

Innovation & Success

Lennar®, headquartered in Miami since 1954, is South Florida's number one homebuilder. However, Lennar®'s experience and reputation for excellence extends far beyond Florida.

Lennar® has been constructing quality homes for families in 18 states, including some of the nation's most sought-after locations. Lennar® also services their customers with a complete offering of financial services including mortgages, title and insurances.

A publicly traded company, Lennar® Corporation is listed on the prestigious New York Stock Exchange, trading under the symbol LEN.

Lennar® is built upon an underlying foundation of Quality, Value and Integrity, and our commitment to those values guides us to this day.

An outstanding customer experience is always our top priority. We make buying your new home easy. Our helpful associates guide homebuyers through every step of the home buying process, from the first visit to full ownership. In addition, the Lennar® Customer Care Team is available to new homeowners after move-in to ensure complete satisfaction.

LENNAR®

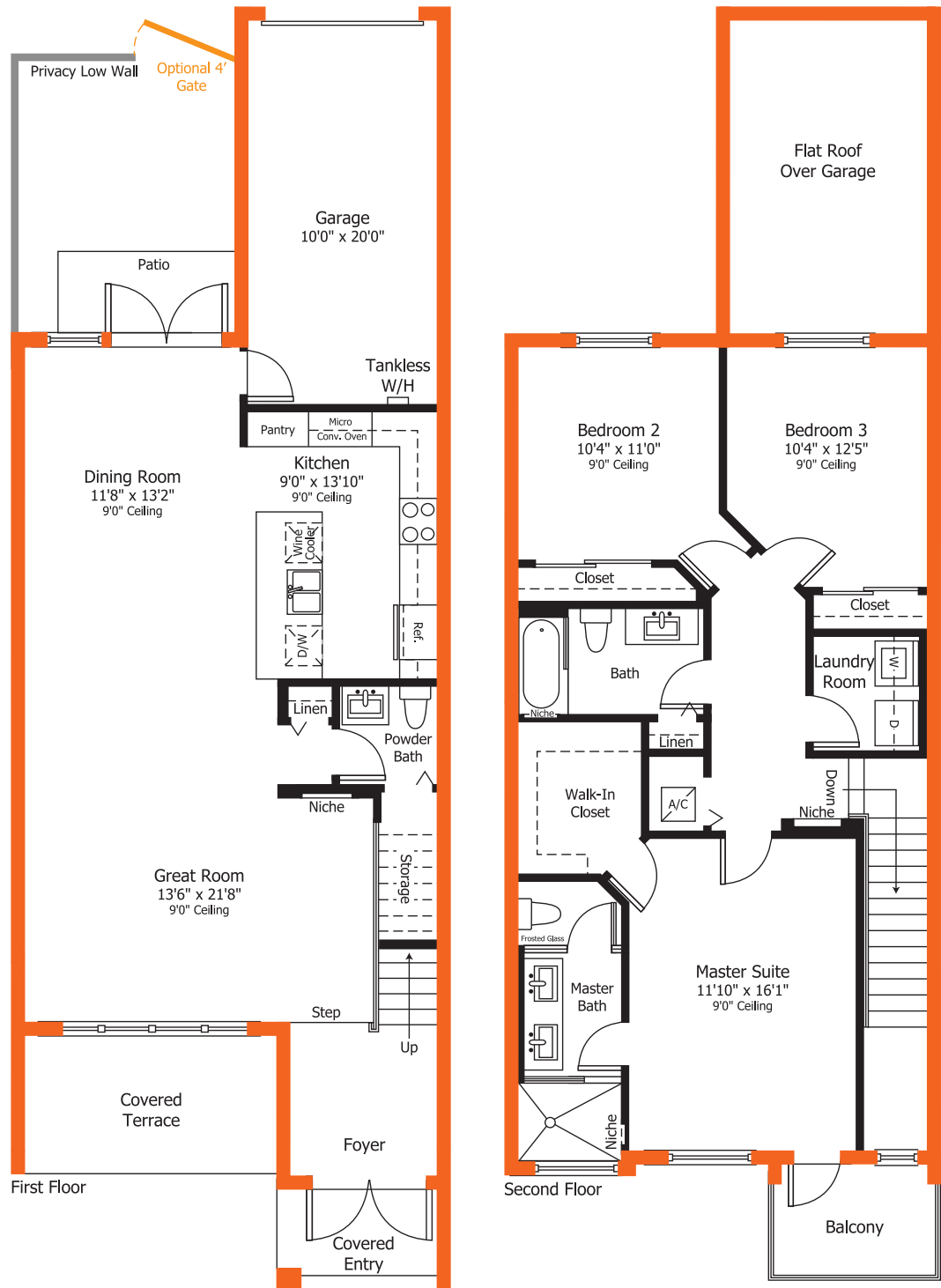
CosmoChic

2-Story Townhome
Floorplans



Townhome Model A

2-Story | 3 Bedrooms | 2.5 Baths | Family Room
Balcony | Covered Terrace | Garage



1,707 sq. ft.	A/C Area
225 sq. ft.	Garage
45 sq. ft.	Covered Entry
98 sq. ft.	Covered Terrace
56 sq. ft.	Balcony
2,131 sq. ft.	Total



Preliminary Artist's Concept

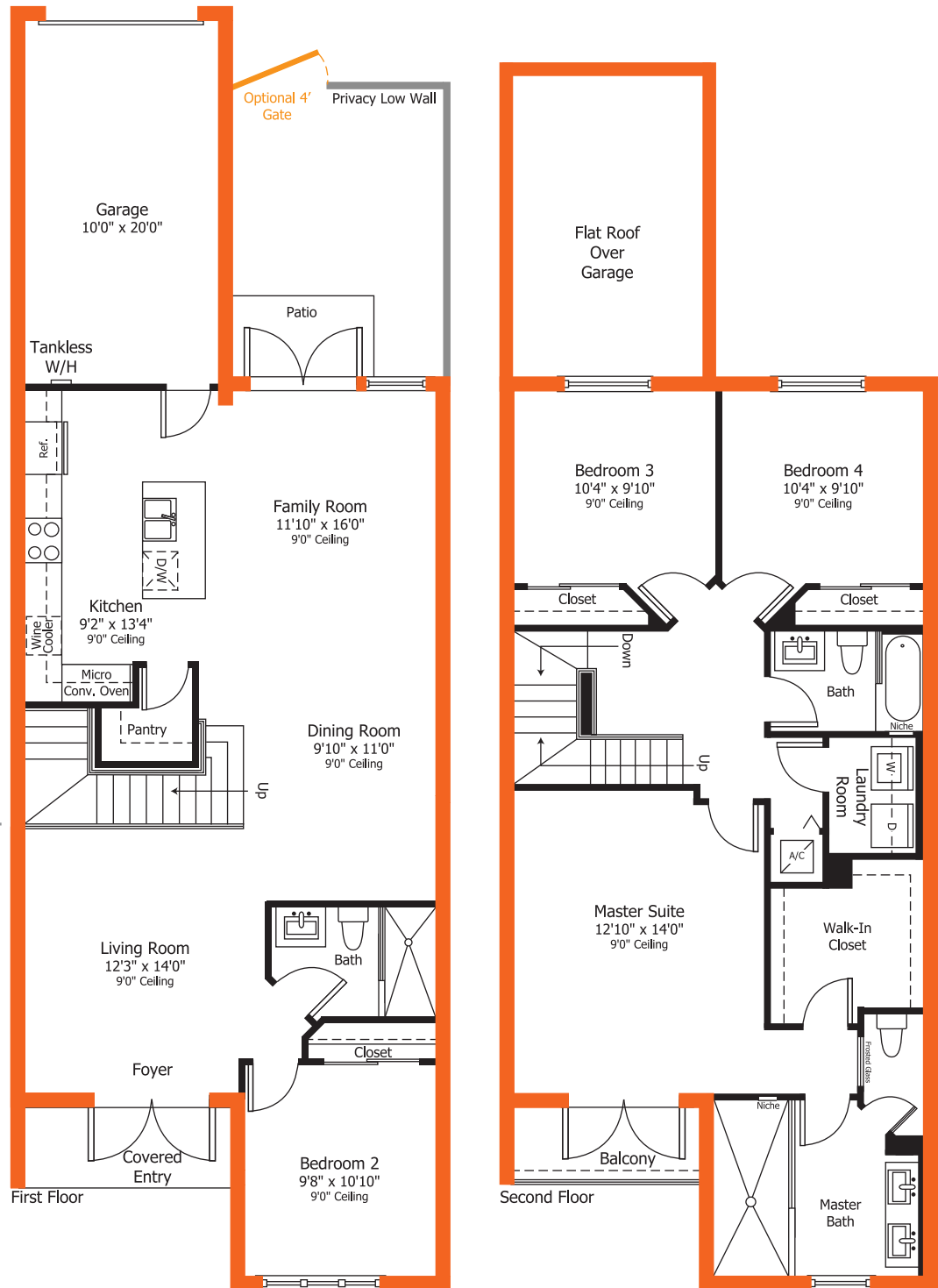
Plans and elevations are artist's renderings and may not accurately represent the actual condition of a home as constructed, and may contain options which are not standard on all models. Lennar reserves the right to make changes to these floor plans, specifications, dimensions and elevations without prior notice. Stated dimensions and square footage are approximate and should not be used as representation of the home's precise or actual size. Any statement, verbal or written, regarding "under air" or "finished area" or any other description or modifier of the square footage size of any home is a shorthand description of the manner in which the square footage was estimated and should not be construed to indicate certainty. See a Lennar new home consultant for further information. Garage sizes may vary from home to home and may not accommodate all vehicles. Copyright © 2015 Lennar Corporation. Lennar and the Lennar logo are registered service marks of Lennar Corporation and/or its subsidiaries. CGC - 062343. 09/15

Townhome Model B

2-Story | 4 Bedrooms | 3 Baths | Family Room | Balcony | Garage



1,824 sq. ft.	A/C Area
227 sq. ft.	Garage
44 sq. ft.	Covered Entry
40 sq. ft.	Balcony
<hr/>	
2,135 sq. ft.	Total



Preliminary Artist's Concept

Plans and elevations are artist's renderings and may not accurately represent the actual condition of a home as constructed, and may contain options which are not standard on all models. Lennar reserves the right to make changes to these floor plans, specifications, dimensions and elevations without prior notice. Stated dimensions and square footage are approximate and should not be used as representation of the home's precise or actual size. Any statement, verbal or written, regarding "under air" or "finished area" or any other description or modifier of the square footage size of any home is a shorthand description of the manner in which the square footage was estimated and should not be construed to indicate certainty. See a Lennar new home consultant for further information. Garage sizes may vary from home to home and may not accommodate all vehicles. Copyright © 2015 Lennar Corporation. Lennar and the Lennar logo are registered service marks of Lennar Corporation and/or its subsidiaries. CGC - 062343. 09/15



Townhome

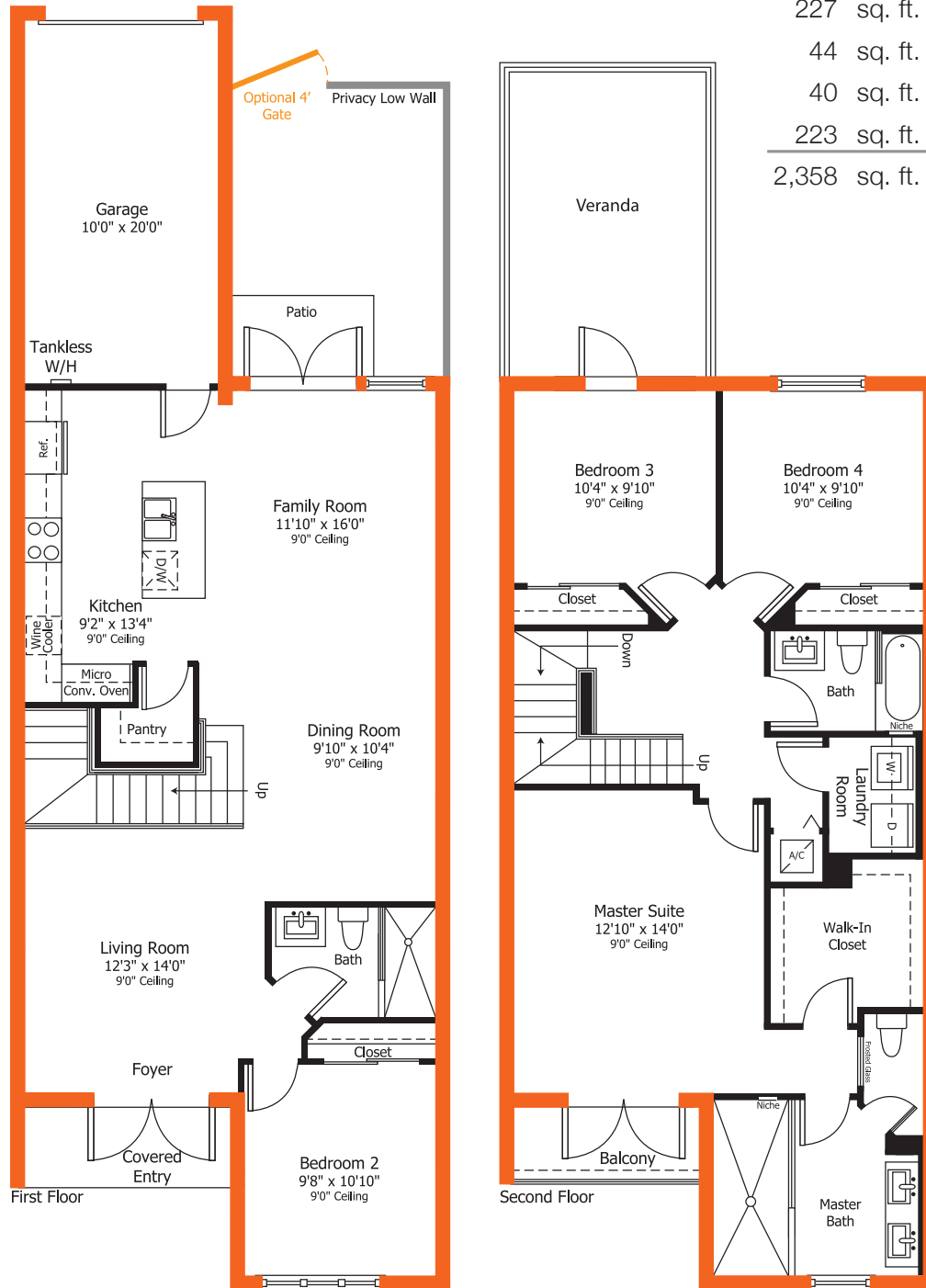
Model B

Veranda Floorplan on 22' x 100' Homesites Only

2-Story | 4 Bedrooms | 3 Baths | Family Room
Balcony | Garage



1,824 sq. ft.	A/C Area
227 sq. ft.	Garage
44 sq. ft.	Covered Entry
40 sq. ft.	Balcony
223 sq. ft.	Veranda
<hr/>	
2,358 sq. ft.	Total

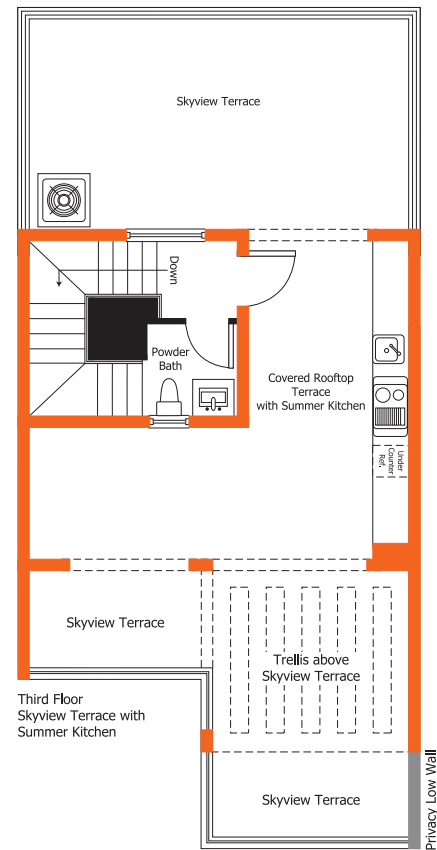
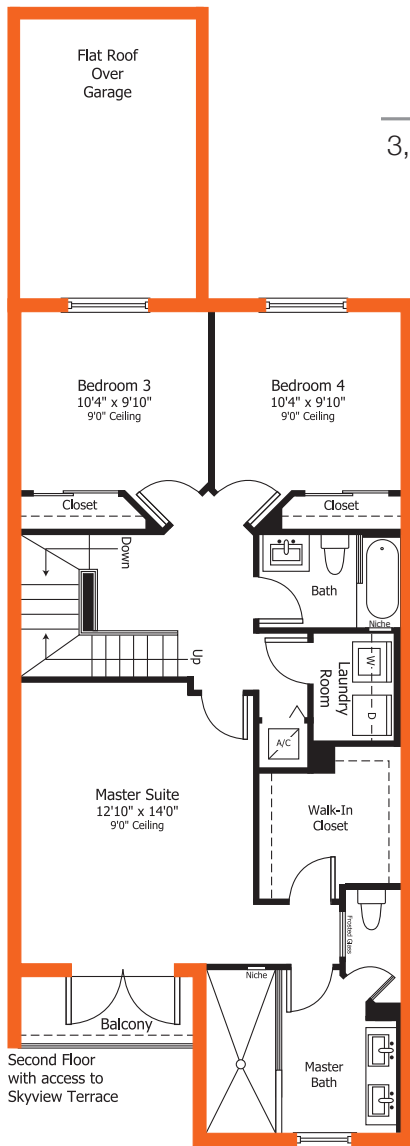
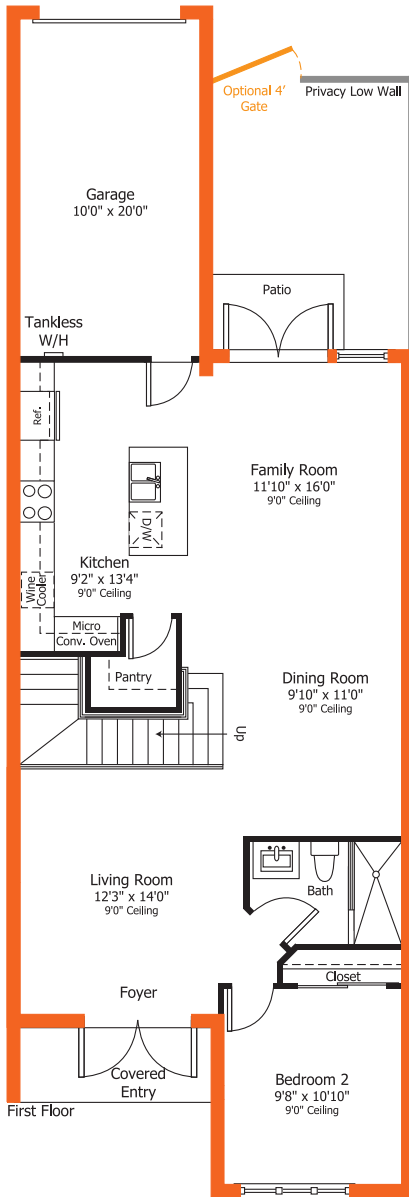


Preliminary Artist's Concept

Plans and elevations are artist's renderings and may not accurately represent the actual condition of a home as constructed, and may contain options which are not standard on all models. Lennar reserves the right to make changes to these floor plans, specifications, dimensions and elevations without prior notice. Stated dimensions and square footage are approximate and should not be used as representation of the home's precise or actual size. Any statement, verbal or written, regarding "under air" or "finished area" or any other description or modifier of the square footage size of any home is a shorthand description of the manner in which the square footage was estimated and should not be construed to indicate certainty. See a Lennar new home consultant for further information. Garage sizes may vary from home to home and may not accommodate all vehicles. Copyright © 2015 Lennar Corporation. Lennar and the Lennar logo are registered service marks of Lennar Corporation and/or its subsidiaries. CGC - 062343. 09/15

Townhome Model B

3-Story | 4 Bedrooms | 3 Baths | Great Room | Balcony | Garage
Skyview Terrace with Summer Kitchen & Powder Bath



1,975	sq. ft.	A/C Area
227	sq. ft.	Garage
44	sq. ft.	Covered Entry
40	sq. ft.	Balcony
796	sq. ft.	Skyview Terrace
<u>3,082</u>	sq. ft.	Total

Preliminary Artist's Concept

Plans and elevations are artist's renderings and may not accurately represent the actual condition of a home as constructed, and may contain options which are not standard on all models. Lennar reserves the right to make changes to these floor plans, specifications, dimensions and elevations without prior notice. Stated dimensions and square footage are approximate and should not be used as representation of the home's precise or actual size. Any statement, verbal or written, regarding "under air" or "finished area" or any other description or modifier of the square footage size of any home is a shorthand description of the manner in which the square footage was estimated and should not be construed to indicate certainty. See a Lennar new home consultant for further information. Garage sizes may vary from home to home and may not accommodate all vehicles. Copyright © 2015 Lennar Corporation. Lennar and the Lennar logo are registered service marks of Lennar Corporation and/or its subsidiaries. CGC - 062343. 09/15

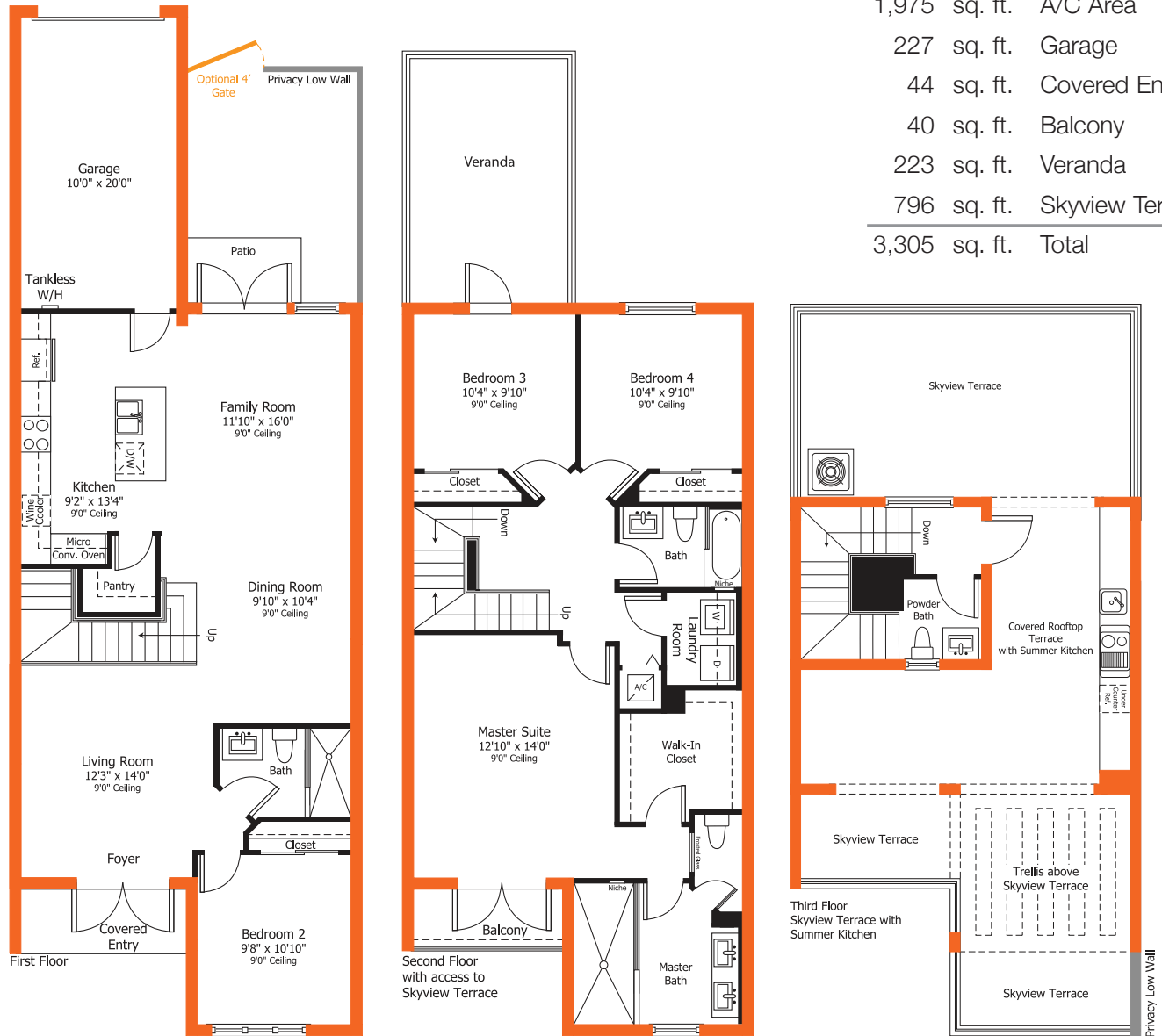


Townhome

Model B

3-Story | 4 Bedrooms | 3 Baths | Family Room | Balcony | Garage

Skyview Terrace and Veranda Floorplan on 22' x 100' Homesites Only



1,975 sq. ft.	A/C Area
227 sq. ft.	Garage
44 sq. ft.	Covered Entry
40 sq. ft.	Balcony
223 sq. ft.	Veranda
796 sq. ft.	Skyview Terrace
3,305 sq. ft.	Total

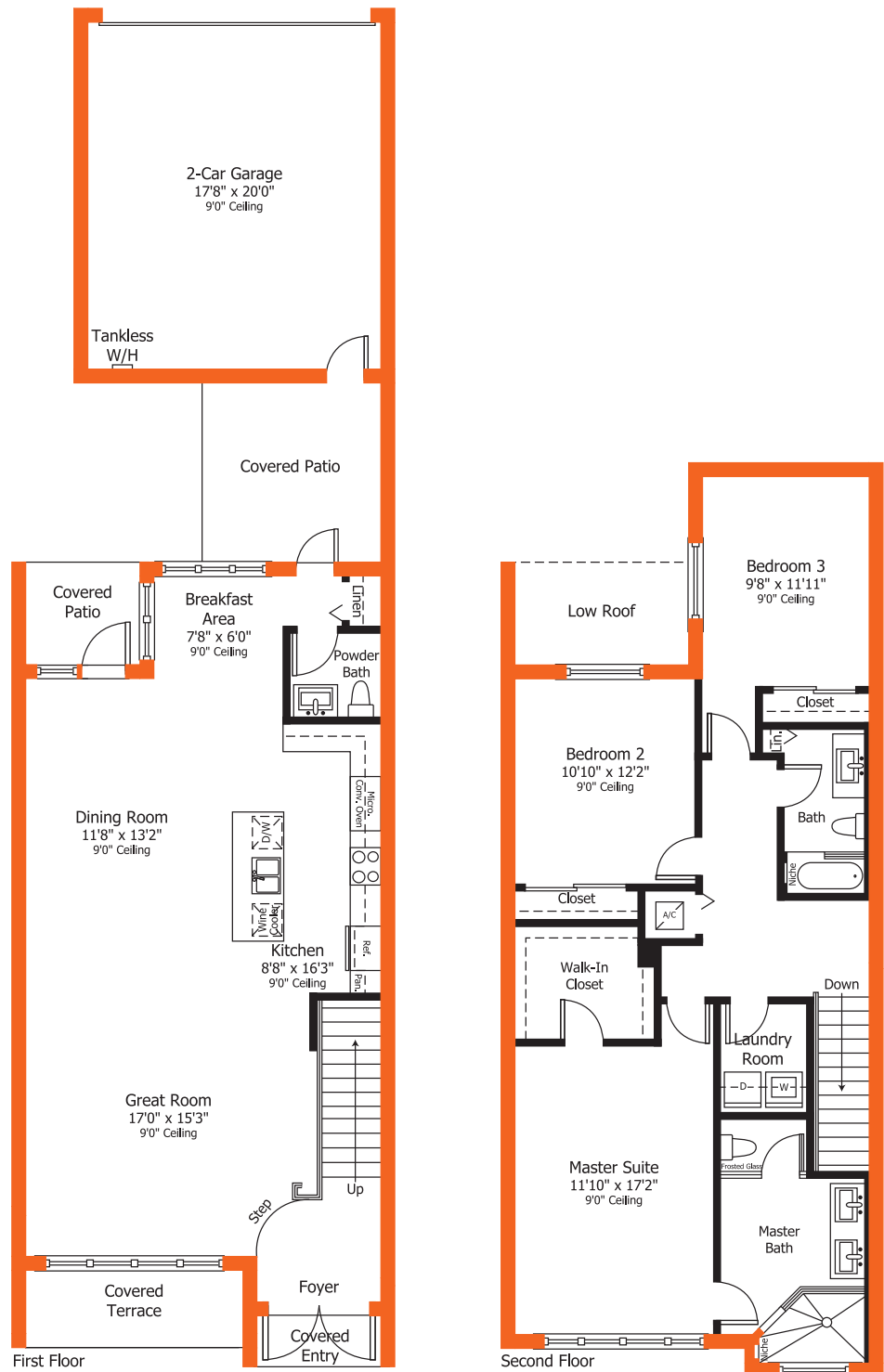


Preliminary Artist's Concept

Plans and elevations are artist's renderings and may not accurately represent the actual condition of a home as constructed, and may contain options which are not standard on all models. Lennar reserves the right to make changes to these floor plans, specifications, dimensions and elevations without prior notice. Stated dimensions and square footage are approximate and should not be used as representation of the home's precise or actual size. Any statement, verbal or written, regarding "under air" or "finished area" or any other description or modifier of the square footage size of any home is a shorthand description of the manner in which the square footage was estimated and should not be construed to indicate certainty. See a Lennar new home consultant for further information. Garage sizes may vary from home to home and may not accommodate all vehicles. Copyright © 2015 Lennar Corporation. Lennar and the Lennar logo are registered service marks of Lennar Corporation and/or its subsidiaries. CGC - 062343. 09/15

Townhome Model C

2-Story | 3 Bedrooms | 2.5 Baths | Great Room | Breakfast Area
Covered Terrace | Covered Patio | 2-Car Garage



1,904	sq. ft.	A/C Area
398	sq. ft.	2-Car Garage
64	sq. ft.	Covered Terrace
159	sq. ft.	Covered Patio
25	sq. ft.	Covered Entry
<hr/>		
2,550	sq. ft.	Total

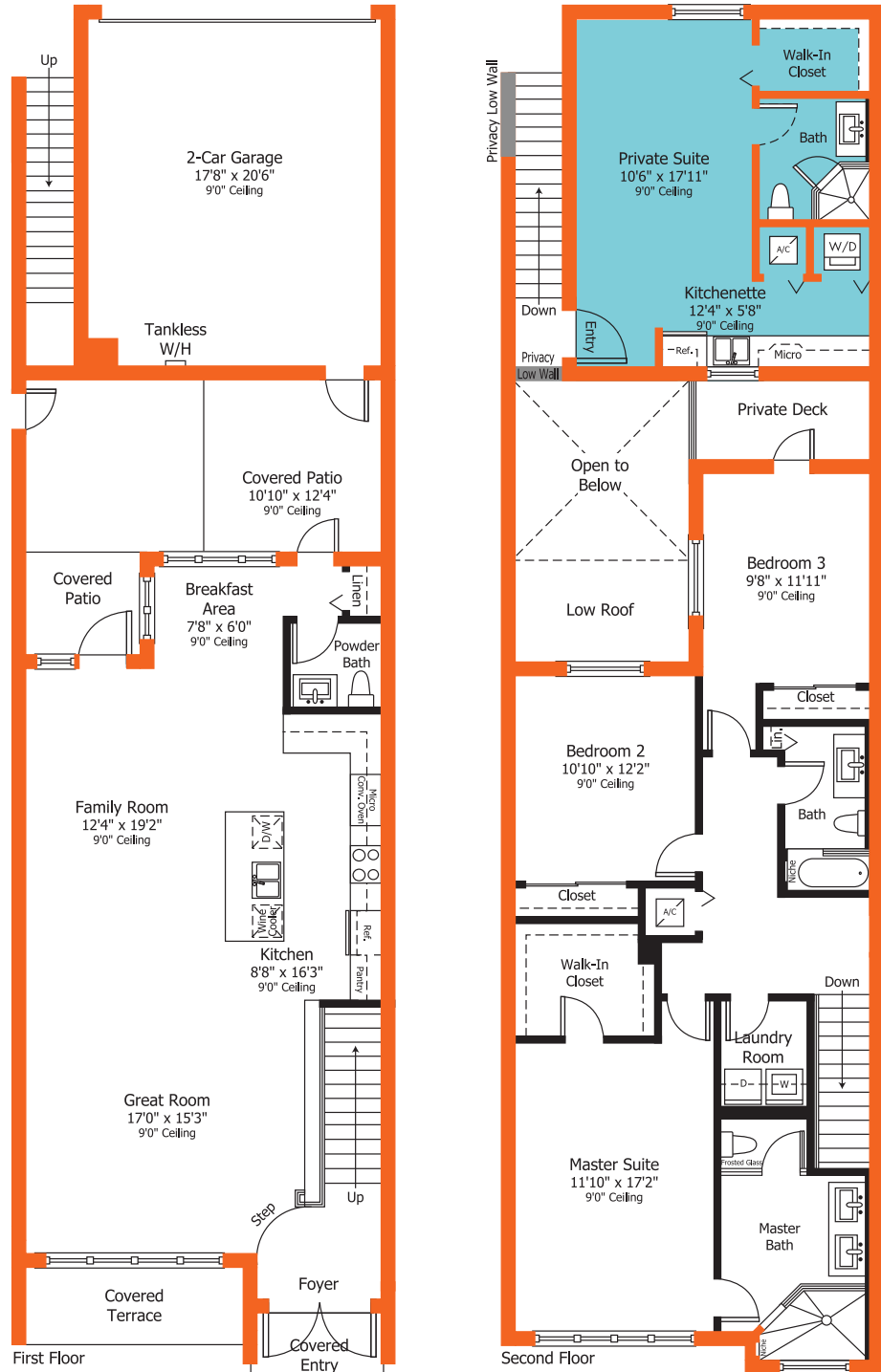
Preliminary Artist's Concept

Plans and elevations are artist's renderings and may not accurately represent the actual condition of a home as constructed, and may contain options which are not standard on all models. Lennar reserves the right to make changes to these floor plans, specifications, dimensions and elevations without prior notice. Stated dimensions and square footage are approximate and should not be used as representation of the home's precise or actual size. Any statement, verbal or written, regarding "under air" or "finished area" or any other description or modifier of the square footage size of any home is a shorthand description of the manner in which the square footage was estimated and should not be construed to indicate certainty. See a Lennar new home consultant for further information. Garage sizes may vary from home to home and may not accommodate all vehicles. Copyright © 2015 Lennar Corporation. Lennar and the Lennar logo are registered service marks of Lennar Corporation and/or its subsidiaries. CGC - 062343. 09/15



Townhome Model C

MAIN RESIDENCE
 2-Story | 3 Bedrooms | 2.5 Baths | Family Room | Breakfast Area
 Covered Terrace | Covered Patio | Private Deck | 2-Car Garage
 NEXTGEN[®] with Private Suite, Kitchenette & Bath



2,311 sq. ft.	A/C Area Including NEXTGEN [®] Suite
407 sq. ft.	2-Car Garage
25 sq. ft.	Covered Entry
64 sq. ft.	Covered Terrace
159 sq. ft.	Covered Patio
132 sq. ft.	Private Deck
3,098 sq. ft.	Total



Preliminary Artist's Concept

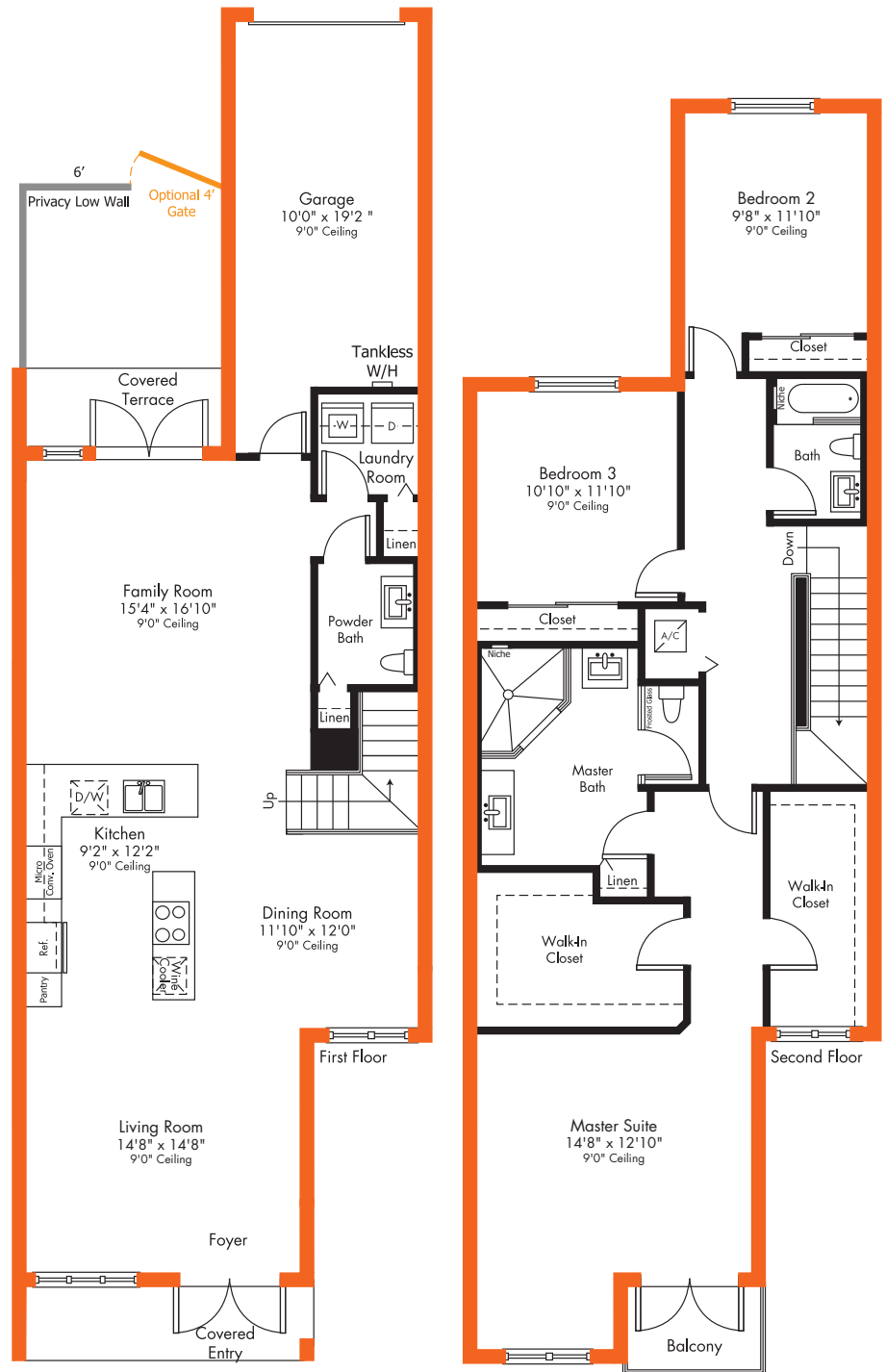
Plans and elevations are artist's renderings and may not accurately represent the actual condition of a home as constructed, and may contain options which are not standard on all models. Lennar reserves the right to make changes to these floor plans, specifications, dimensions and elevations without prior notice. Stated dimensions and square footage are approximate and should not be used as representation of the home's precise or actual size. Any statement, verbal or written, regarding "under air" or "finished area" or any other description or modifier of the square footage size of any home is a shorthand description of the manner in which the square footage was estimated and should not be construed to indicate certainty. See a Lennar new home consultant for further information. Garage sizes may vary from home to home and may not accommodate all vehicles. Copyright © 2015 Lennar Corporation. Lennar and the Lennar logo are registered service marks of Lennar Corporation and/or its subsidiaries. CGC - 062343. 09/15

Townhome Model D

2-Story | 3 Bedrooms | 2.5 Baths | Family Room
Balcony | Covered Terrace | Garage



2,098 sq. ft.	A/C Area
239 sq. ft.	Garage
66 sq. ft.	Covered Entry
48 sq. ft.	Covered Terrace
38 sq. ft.	Balcony
<hr/>	
2,489 sq. ft.	Total



Preliminary Artist's Concept

Plans and elevations are artist's renderings and may not accurately represent the actual condition of a home as constructed, and may contain options which are not standard on all models. Lennar reserves the right to make changes to these floor plans, specifications, dimensions and elevations without prior notice. Stated dimensions and square footage are approximate and should not be used as representation of the home's precise or actual size. Any statement, verbal or written, regarding "under air" or "finished area" or any other description or modifier of the square footage size of any home is a shorthand description of the manner in which the square footage was estimated and should not be construed to indicate certainty. See a Lennar new home consultant for further information. Garage sizes may vary from home to home and may not accommodate all vehicles. Copyright © 2015 Lennar Corporation. Lennar and the Lennar logo are registered service marks of Lennar Corporation and/or its subsidiaries. CGC - 062343. 09/15

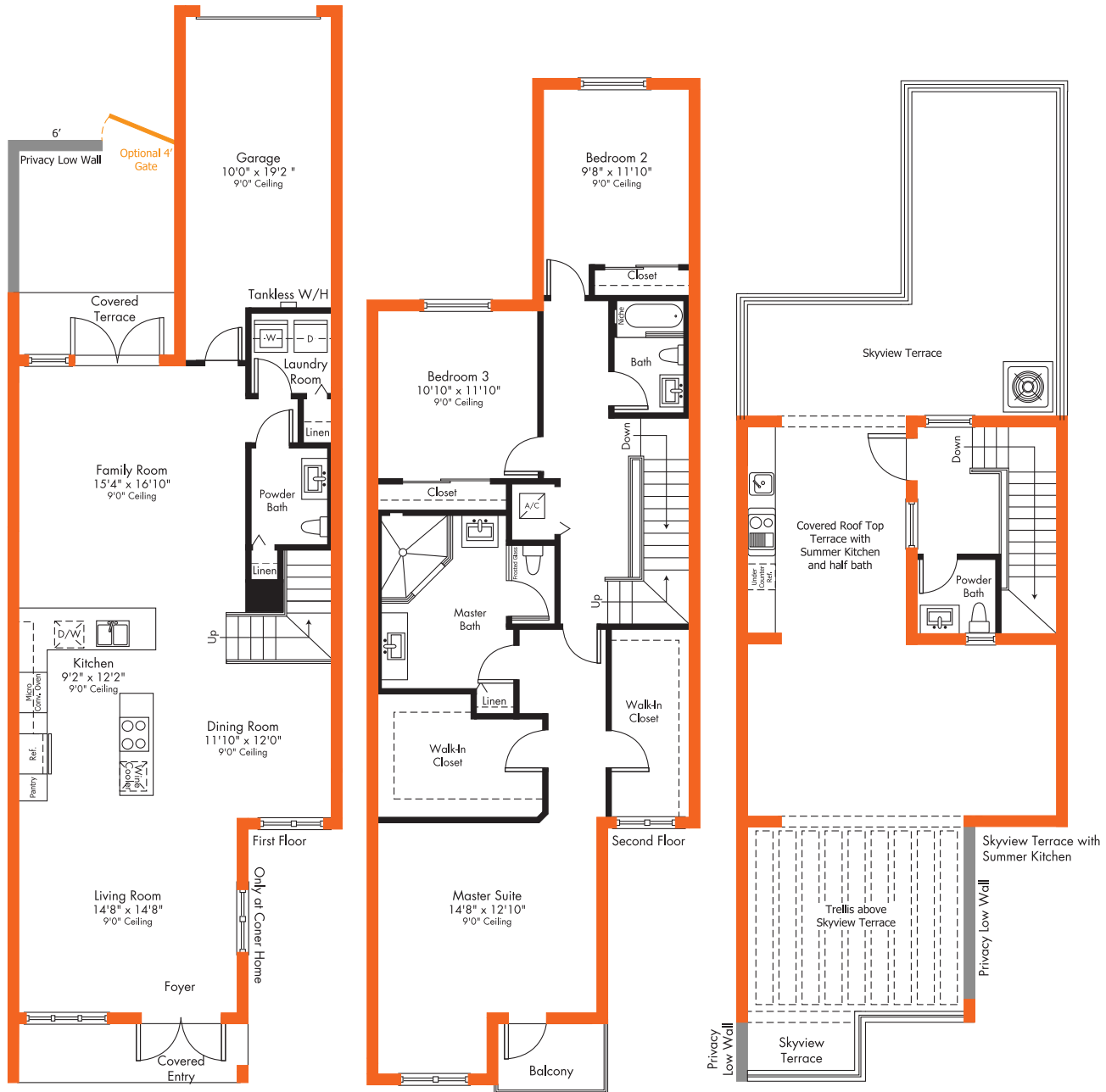


Townhome

Model D

Skyview Terrace

3-Story | 3 Bedrooms | 2.5 Baths | Family Room
Balcony | Covered Terrace | Garage
Skyview Terrace with Summer Kitchen & Powder Bath



2,265 sq. ft.	A/C Area
239 sq. ft.	Garage
66 sq. ft.	Covered Entry
48 sq. ft.	Covered Terrace
38 sq. ft.	Balcony
1,045 sq. ft.	Skyview Terrace
3,701 sq. ft.	Total



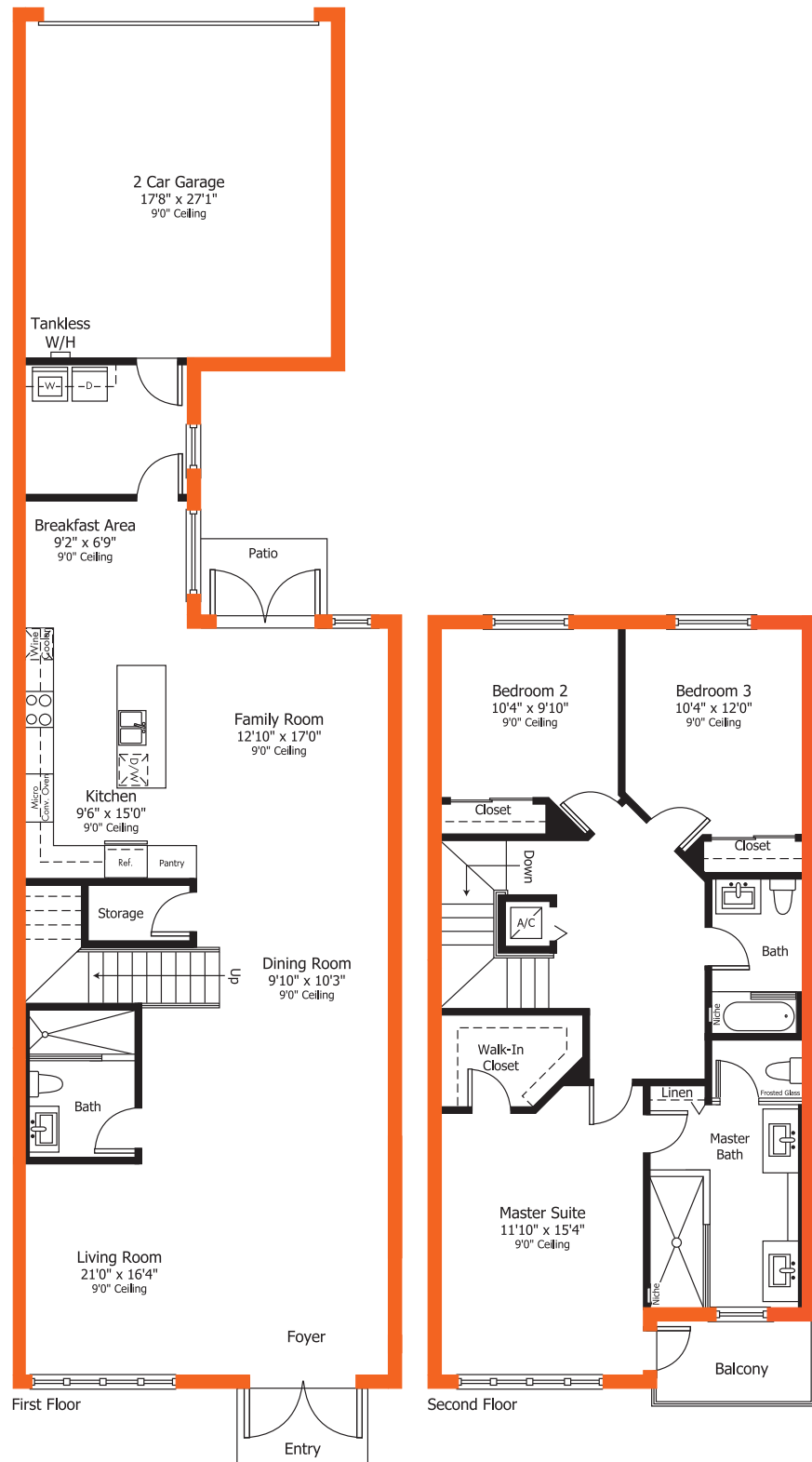
Preliminary Artist's Concept

Plans and elevations are artist's renderings and may not accurately represent the actual condition of a home as constructed, and may contain options which are not standard on all models. Lennar reserves the right to make changes to these floor plans, specifications, dimensions and elevations without prior notice. Stated dimensions and square footage are approximate and should not be used as representation of the home's precise or actual size. Any statement, verbal or written, regarding "under air" or "finished area" or any other description or modifier of the square footage size of any home is a shorthand description of the manner in which the square footage was estimated and should not be construed to indicate certainty. See a Lennar new home consultant for further information. Garage sizes may vary from home to home and may not accommodate all vehicles. Copyright © 2015 Lennar Corporation. Lennar and the Lennar logo are registered service marks of Lennar Corporation and/or its subsidiaries. CGC - 062343. 09/15

Townhome Model E

2-Story | 3 Bedrooms | 3 Baths | Family Room
Breakfast Area | Balcony | 2-Car Garage

2,061 sq. ft.	A/C Area
367 sq. ft.	2-Car Garage
25 sq. ft.	Covered Entry
56 sq. ft.	Balcony
<hr/>	
2,509 sq. ft.	Total



Preliminary Artist's Concept

Plans and elevations are artist's renderings and may not accurately represent the actual condition of a home as constructed, and may contain options which are not standard on all models. Lennar reserves the right to make changes to these floor plans, specifications, dimensions and elevations without prior notice. Stated dimensions and square footage are approximate and should not be used as representation of the home's precise or actual size. Any statement, verbal or written, regarding "under air" or "finished area" or any other description or modifier of the square footage size of any home is a shorthand description of the manner in which the square footage was estimated and should not be construed to indicate certainty. See a Lennar new home consultant for further information. Garage sizes may vary from home to home and may not accommodate all vehicles. Copyright © 2015 Lennar Corporation. Lennar and the Lennar logo are registered service marks of Lennar Corporation and/or its subsidiaries. CGC - 062343. 09/15

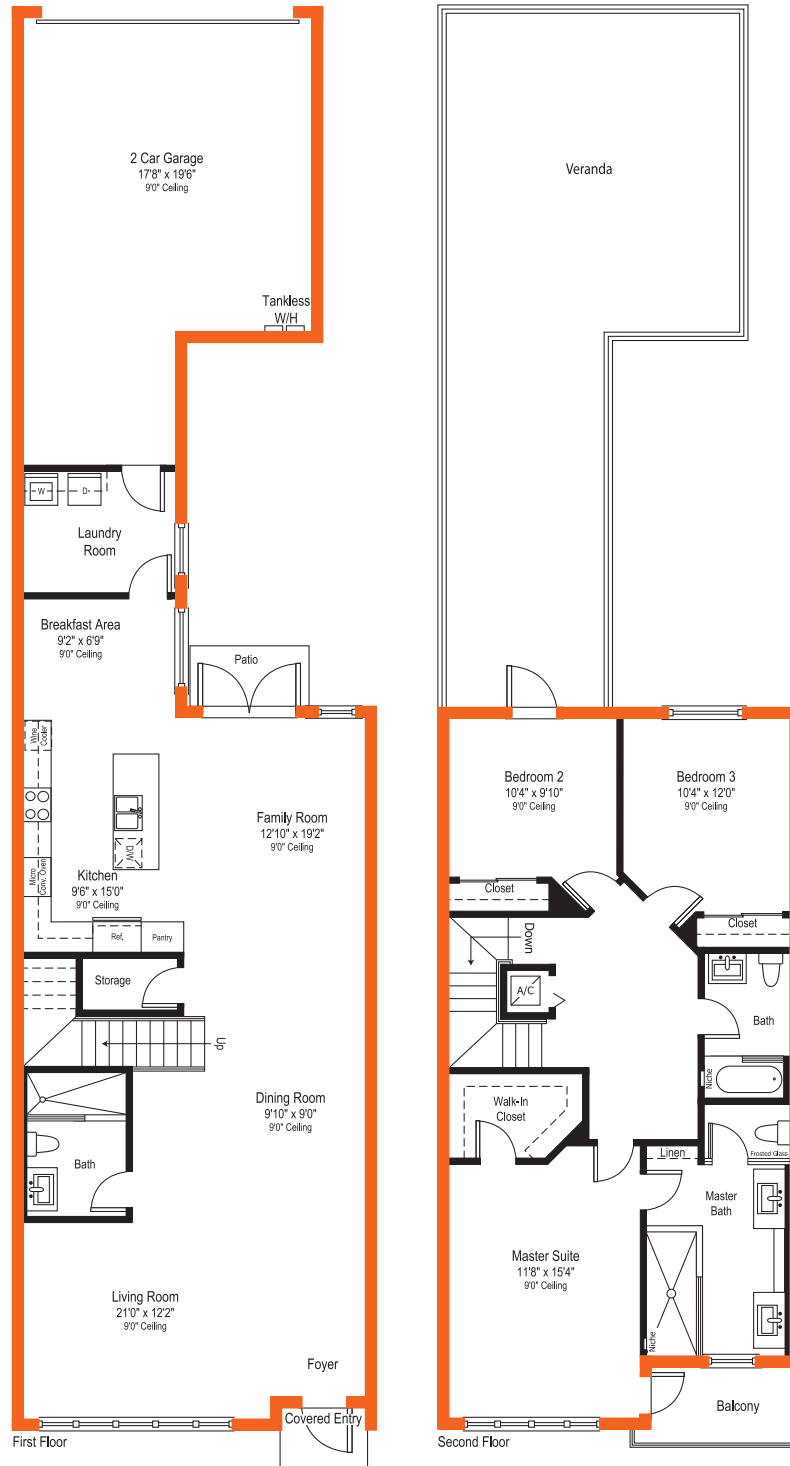


Townhome

Model E

2-Story | 3 Bedrooms | 3 Baths | Family Room
Balcony | 2-Car Garage

Veranda Floorplan on 22' x 100' Homesites Only



2,061 sq. ft.	A/C Area
466 sq. ft.	2-Car Garage
25 sq. ft.	Covered Entry
57 sq. ft.	Balcony
618 sq. ft.	Veranda
3,227 sq. ft.	Total



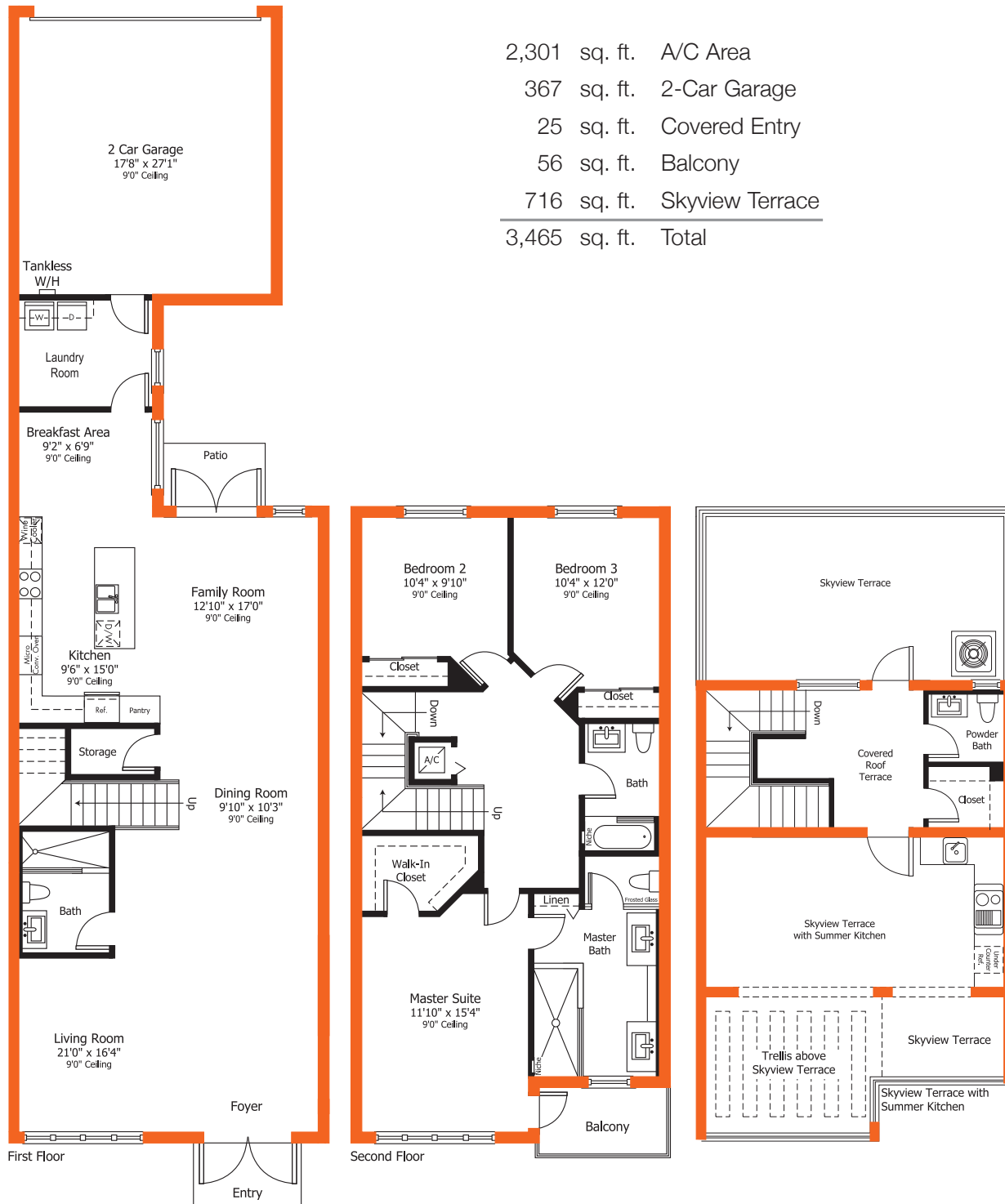
Preliminary Artist's Concept

Plans and elevations are artist's renderings and may not accurately represent the actual condition of a home as constructed, and may contain options which are not standard on all models. Lennar reserves the right to make changes to these floor plans, specifications, dimensions and elevations without prior notice. Stated dimensions and square footage are approximate and should not be used as representation of the home's precise or actual size. Any statement, verbal or written, regarding "under air" or "finished area" or any other description or modifier of the square footage size of any home is a shorthand description of the manner in which the square footage was estimated and should not be construed to indicate certainty. See a Lennar new home consultant for further information. Garage sizes may vary from home to home and may not accommodate all vehicles. Copyright © 2015 Lennar Corporation. Lennar and the Lennar logo are registered service marks of Lennar Corporation and/or its subsidiaries. CGC - 062343. 09/15

Townhome

Model E Skyview Terrace

3-Story | 3 Bedrooms | 3 Baths | Family Room
Breakfast Area | Balcony | 2-Car Garage
Skyview Terrace with Summer Kitchen & Powder Bath



2,301 sq. ft.	A/C Area
367 sq. ft.	2-Car Garage
25 sq. ft.	Covered Entry
56 sq. ft.	Balcony
716 sq. ft.	Skyview Terrace
<hr/>	
3,465 sq. ft.	Total

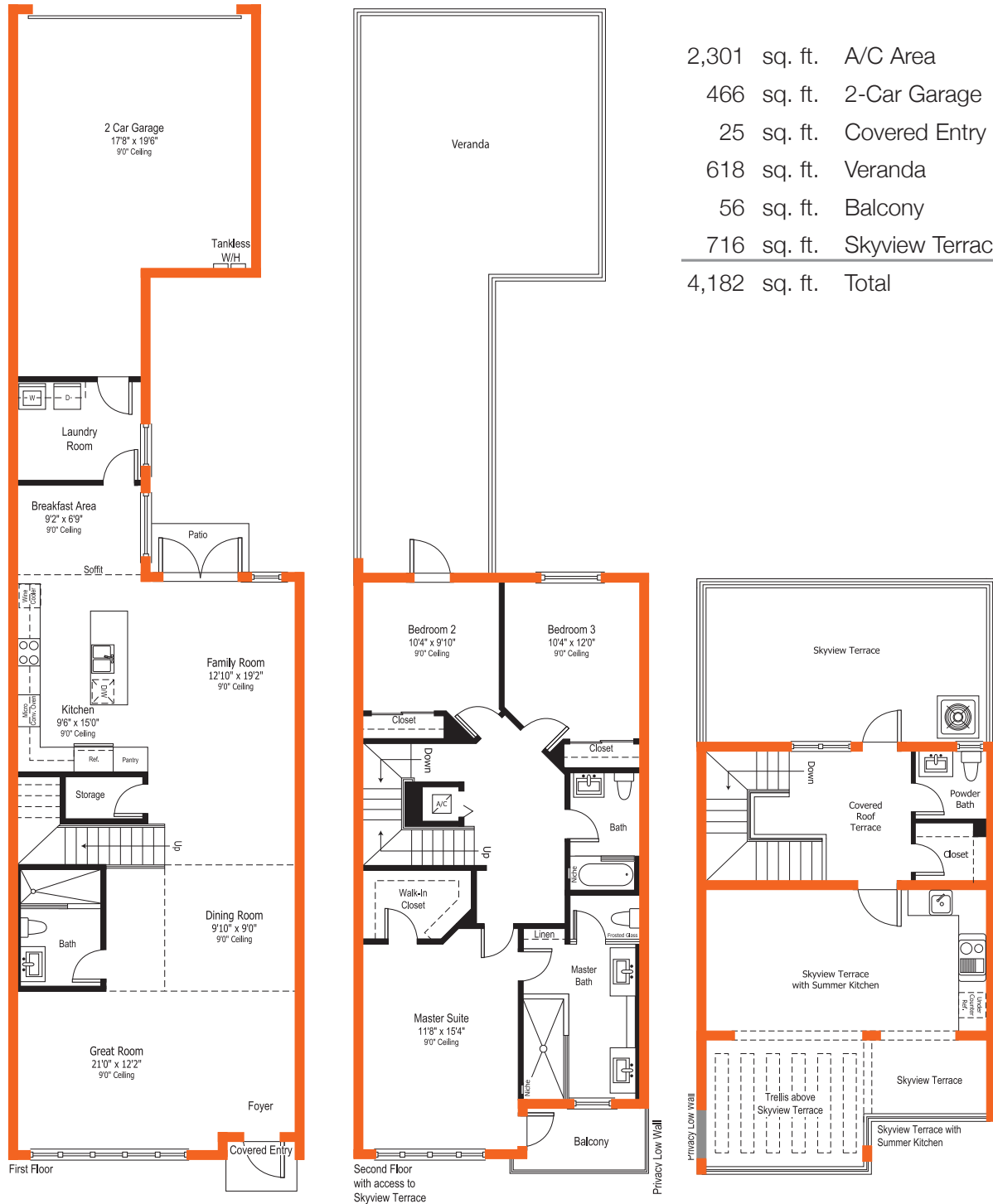
Preliminary Artist's Concept

Plans and elevations are artist's renderings and may not accurately represent the actual condition of a home as constructed, and may contain options which are not standard on all models. Lennar reserves the right to make changes to these floor plans, specifications, dimensions and elevations without prior notice. Stated dimensions and square footage are approximate and should not be used as representation of the home's precise or actual size. Any statement, verbal or written, regarding "under air" or "finished area" or any other description or modifier of the square footage size of any home is a shorthand description of the manner in which the square footage was estimated and should not be construed to indicate certainty. See a Lennar new home consultant for further information. Garage sizes may vary from home to home and may not accommodate all vehicles. Copyright © 2015 Lennar Corporation. Lennar and the Lennar logo are registered service marks of Lennar Corporation and/or its subsidiaries. CGC - 062343. 09/15



Townhome

Model E 3-Story | 3 Bedrooms | 3 Baths | Family Room | Balcony | 2-Car Garage Skyview Terrace with Summer Kitchen & Powder Bath Skyview Terrace and Veranda Floorplan on 22' x 100' Homesites Only

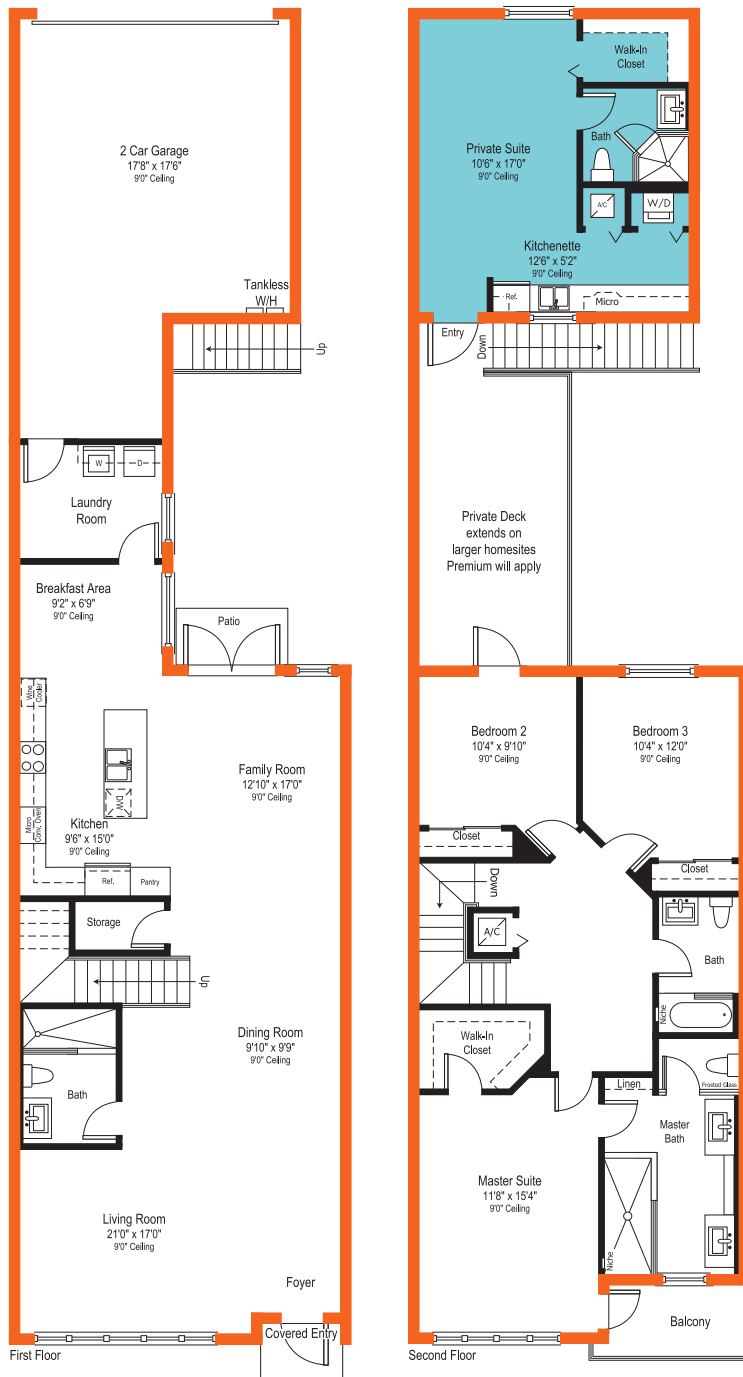


Preliminary Artist's Concept

Plans and elevations are artist's renderings and may not accurately represent the actual condition of a home as constructed, and may contain options which are not standard on all models. Lennar reserves the right to make changes to these floor plans, specifications, dimensions and elevations without prior notice. Stated dimensions and square footage are approximate and should not be used as representation of the home's precise or actual size. Any statement, verbal or written, regarding "under air" or "finished area" or any other description or modifier of the square footage size of any home is a shorthand description of the manner in which the square footage was estimated and should not be construed to indicate certainty. See a Lennar new home consultant for further information. Garage sizes may vary from home to home and may not accommodate all vehicles. Copyright © 2015 Lennar Corporation. Lennar and the Lennar logo are registered service marks of Lennar Corporation and/or its subsidiaries. CGC - 062343. 09/15

Townhome Model E

2-Story | 3 Bedrooms | 3 Baths | Family Room
Breakfast Area | Balcony | 2-Car Garage
NEXTGEN® with Private Suite, Kitchenette & Bath



2,445 sq. ft.	A/C Area Including NEXTGEN® Suite
367 sq. ft.	2-Car Garage
19 sq. ft.	Covered Entry
56 sq. ft.	Balcony
129 sq. ft.	Private Deck
3,016 sq. ft.	Total

Preliminary Artist's Concept

Plans and elevations are artist's renderings and may not accurately represent the actual condition of a home as constructed, and may contain options which are not standard on all models. Lennar reserves the right to make changes to these floor plans, specifications, dimensions and elevations without prior notice. Stated dimensions and square footage are approximate and should not be used as representation of the home's precise or actual size. Any statement, verbal or written, regarding "under air" or "finished area" or any other description or modifier of the square footage size of any home is a shorthand description of the manner in which the square footage was estimated and should not be construed to indicate certainty. See a Lennar new home consultant for further information. Garage sizes may vary from home to home and may not accommodate all vehicles. Copyright © 2015 Lennar Corporation. Lennar and the Lennar logo are registered service marks of Lennar Corporation and/or its subsidiaries. CGC - 062343. 09/15

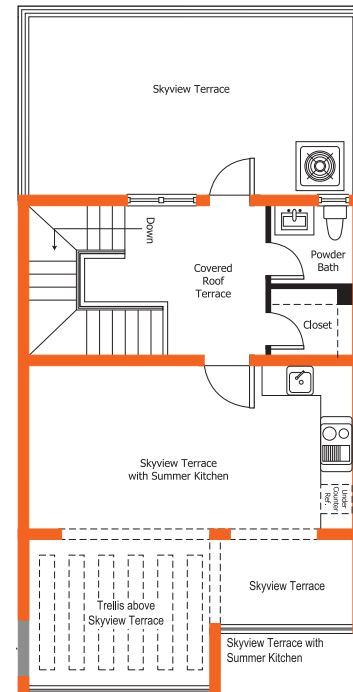
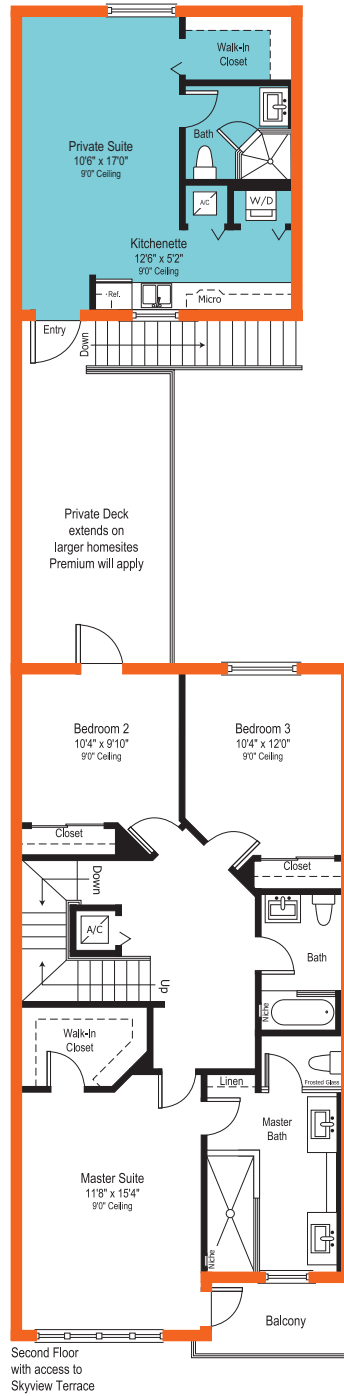
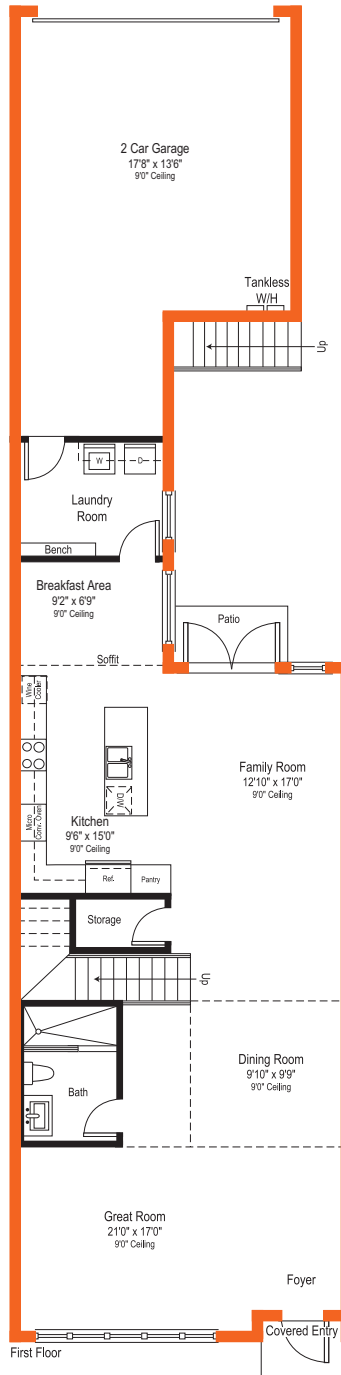


Townhome

Model E

Skyview Terrace

MAIN RESIDENCE
 3-Story | 3 Bedrooms | 3 Baths | Family Room
 Breakfast Area | Balcony | 2-Car Garage
 Skyview Terrace with Summer Kitchen and Half Bath
 NEXTGEN® with Private Suite, Kitchenette & Bath



2,691 sq. ft.	A/C Area Includes NEXTGEN® Suite
367 sq. ft.	2-Car Garage
19 sq. ft.	Covered Entry
56 sq. ft.	Balcony
129 sq. ft.	Private Deck
716 sq. ft.	Skyview Terrace
<u>3,978 sq. ft.</u>	<u>Total</u>



Preliminary Artist's Concept

Plans and elevations are artist's renderings and may not accurately represent the actual condition of a home as constructed, and may contain options which are not standard on all models. Lennar reserves the right to make changes to these floor plans, specifications, dimensions and elevations without prior notice. Stated dimensions and square footage are approximate and should not be used as representation of the home's precise or actual size. Any statement, verbal or written, regarding "under air" or "finished area" or any other description or modifier of the square footage size of any home is a shorthand description of the manner in which the square footage was estimated and should not be construed to indicate certainty. See a Lennar new home consultant for further information. Garage sizes may vary from home to home and may not accommodate all vehicles. Copyright © 2015 Lennar Corporation. Lennar and the Lennar logo are registered service marks of Lennar Corporation and/or its subsidiaries. CGC - 062343. 09/15

Preliminary Overall Community Site Plan





Preliminary Artist's Concept

Site plans and community maps are conceptual in nature and are merely an artist's rendition. These maps are solely for illustrative purposes and should never be relied upon. THE PAST, PRESENT, FUTURE OR PROPOSED ROADS, EASEMENTS, LAND USES, CONDITIONS, PLAT MAPS, LOT SIZES OR LAYOUTS, ZONING, UTILITIES, DRAINAGE, LAND CONDITIONS, OR DEVELOPMENT OF ANY TYPE WHATSOEVER, WHETHER REFLECTED ON THE SITE PLAN OR MAP, OR WHETHER OUTSIDE THE BOUNDARIES OF THE SITE PLAN OR MAP, MAY NOT BE SHOWN OR MAY BE INCOMPLETE OR INACCURATE. THE PRESENT, FUTURE OR PROPOSED ROADS, EASEMENTS, LAND USES, CONDITIONS, PLAT MAPS, LOT SIZES OR LAYOUTS, ZONING, DRAINAGE, LAND CONDITIONS, OR DEVELOPMENT OF ANY TYPE MAY OR MAY NOT CHANGE IN THE FUTURE. IT IS NOT UNCOMMON THAT ANY OF THE FOREGOING CAN CHANGE WITHOUT NOTICE TO YOU. YOU SHOULD NEVER RELY ON THE ACCURACY OF THIS MAP IN MAKING ANY DECISIONS RELATIVE TO PURCHASING ANY PROPERTY. We reserve the right to make changes at any time without notice. Select homesites have premiums. Proposed amenities for the community are subject to changes, substitutions and/or deletions without notice. Lennar makes no representation or guarantee that the community or any amenities will be built out as currently planned. Copyright © 2015 Lennar Corporation. Lennar and the Lennar logo are registered service marks of Lennar Corporation and/or its subsidiaries. CGC - 062343, 09/15

CosmoChic

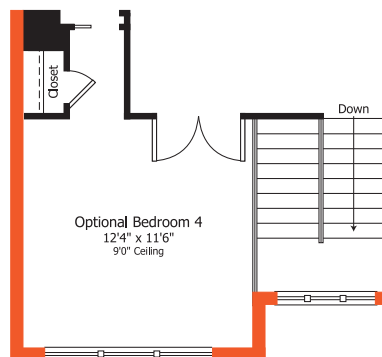
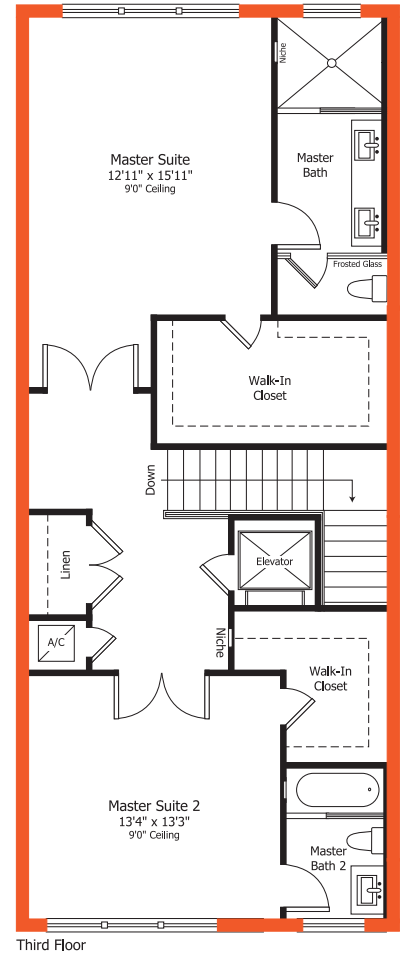
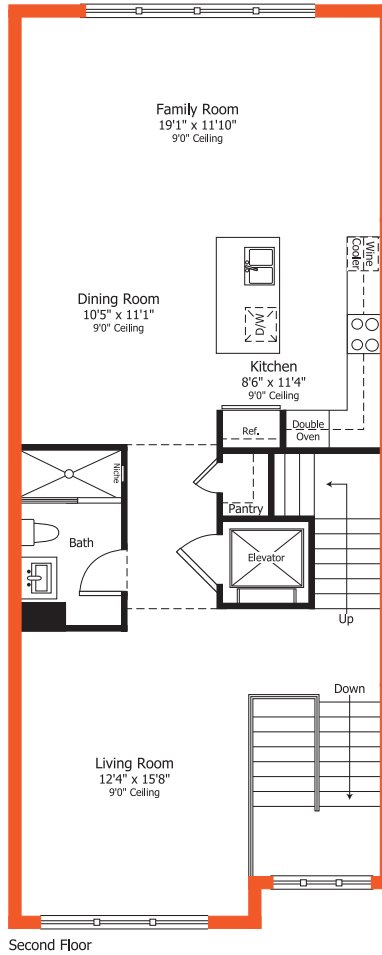
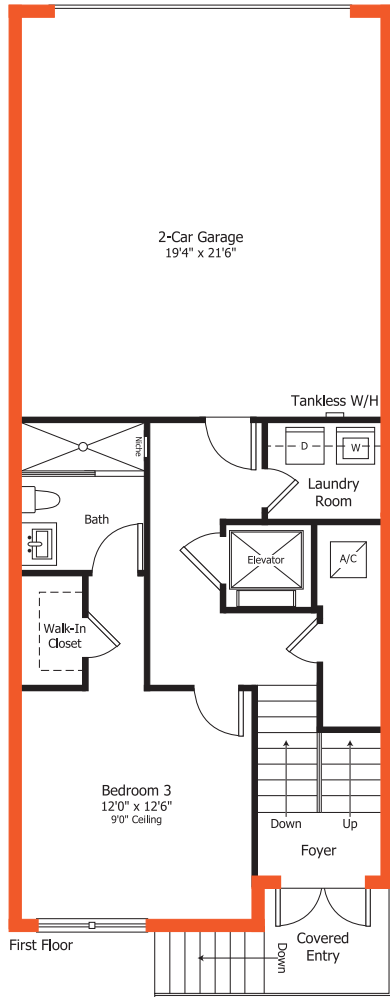
3-Story Townhome

Floorplans



Townhome Model A

3-Story | 3 Bedrooms | 4 Baths | Family Room
Elevator | 2-Car Garage



2,352 sq. ft.	A/C Area
451 sq. ft.	2-Car Garage
20 sq. ft.	Covered Entry
2,823 sq. ft.	Total

Preliminary Artist's Concept

Plans and elevations are artist's renderings and may not accurately represent the actual condition of a home as constructed, and may contain options which are not standard on all models. Lennar reserves the right to make changes to these floor plans, specifications, dimensions and elevations without prior notice. Stated dimensions and square footage are approximate and should not be used as representation of the home's precise or actual size. Any statement, verbal or written, regarding "under air" or "finished area" or any other description or modifier of the square footage size of any home is a shorthand description of the manner in which the square footage was estimated and should not be construed to indicate certainty. See a Lennar new home consultant for further information. Garage sizes may vary from home to home and may not accommodate all vehicles. Copyright © 2015 Lennar Corporation. Lennar and the Lennar logo are registered service marks of Lennar Corporation and/or its subsidiaries. CGC - 062343. 09/15



Townhome Model A

Skyview Terrace

4-Story | 3 Bedrooms | 4 Baths | Family Room | Elevator | 2-Car Garage
 Skyview Terrace with Summer Kitchen & Powder Bath



2,487 sq. ft.	A/C Area
451 sq. ft.	2-Car Garage
20 sq. ft.	Covered Entry
809 sq. ft.	Skyview Terrace
<hr/>	
3,767 sq. ft.	Total

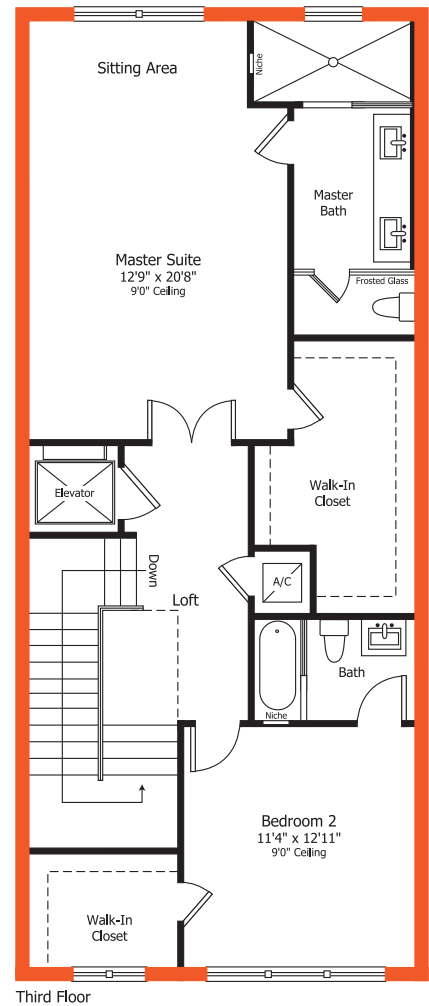
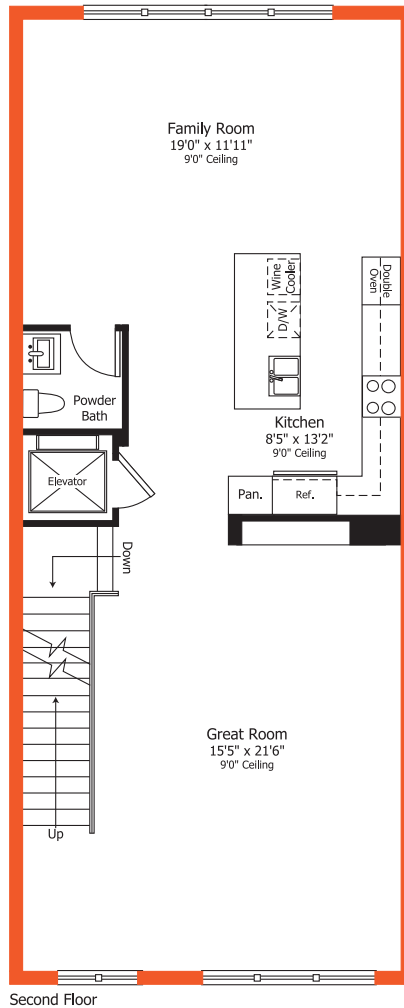
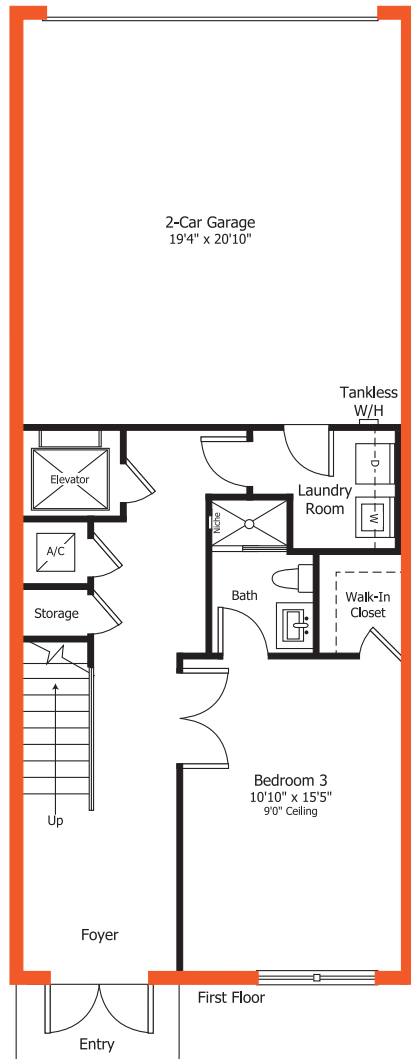


Preliminary Artist's Concept

Plans and elevations are artist's renderings and may not accurately represent the actual condition of a home as constructed, and may contain options which are not standard on all models. Lennar reserves the right to make changes to these floor plans, specifications, dimensions and elevations without prior notice. Stated dimensions and square footage are approximate and should not be used as representation of the home's precise or actual size. Any statement, verbal or written, regarding "under air" or "finished area" or any other description or modifier of the square footage size of any home is a shorthand description of the manner in which the square footage was estimated and should not be construed to indicate certainty. See a Lennar new home consultant for further information. Garage sizes may vary from home to home and may not accommodate all vehicles. Copyright © 2015 Lennar Corporation. Lennar and the Lennar logo are registered service marks of Lennar Corporation and/or its subsidiaries. CGC - 062343. 09/15

Townhome Model B

3-Story | 3 Bedrooms | 3 Baths & Powder Bath | Family Room
Elevator | 2-Car Garage



2,364 sq. ft.	A/C Area
430 sq. ft.	2-Car Garage
25 sq. ft.	Covered Entry
<u>2,819 sq. ft.</u>	Total

Preliminary Artist's Concept

Plans and elevations are artist's renderings and may not accurately represent the actual condition of a home as constructed, and may contain options which are not standard on all models. Lennar reserves the right to make changes to these floor plans, specifications, dimensions and elevations without prior notice. Stated dimensions and square footage are approximate and should not be used as representation of the home's precise or actual size. Any statement, verbal or written, regarding "under air" or "finished area" or any other description or modifier of the square footage size of any home is a shorthand description of the manner in which the square footage was estimated and should not be construed to indicate certainty. See a Lennar new home consultant for further information. Garage sizes may vary from home to home and may not accommodate all vehicles. Copyright © 2015 Lennar Corporation. Lennar and the Lennar logo are registered service marks of Lennar Corporation and/or its subsidiaries. CGC - 062343. 09/15



Townhome Model B

4-Story | 3 Bedrooms | 3 Baths | Family Room | Elevator | 2-Car Garage
 Skyview Terrace with Summer Kitchen & 2 Powder Baths



2,512 sq. ft.	A/C Area
430 sq. ft.	2-Car Garage
25 sq. ft.	Covered Entry
716 sq. ft.	Skyview Terrace
<hr/>	
3,683 sq. ft.	Total

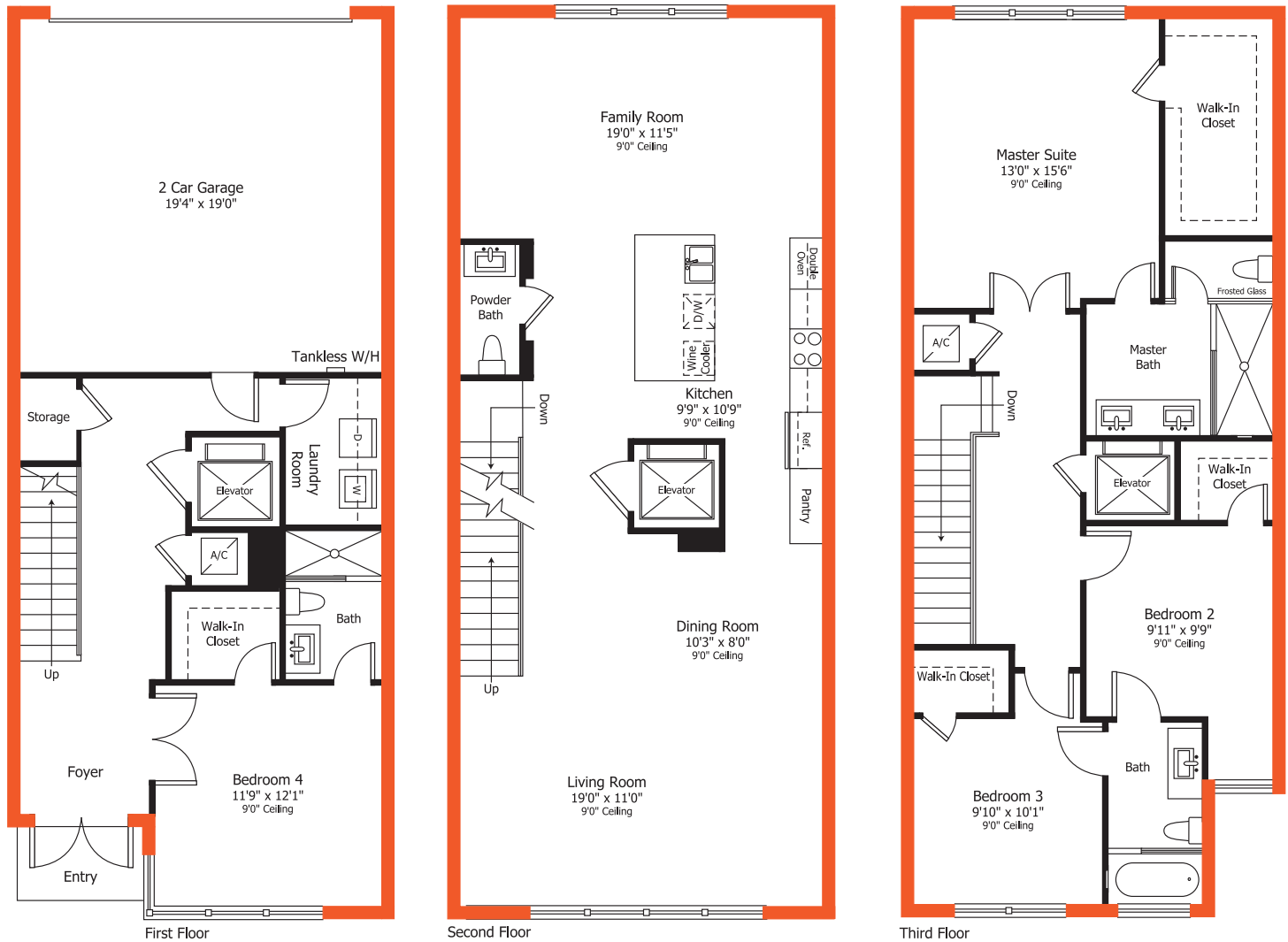


Preliminary Artist's Concept

Plans and elevations are artist's renderings and may not accurately represent the actual condition of a home as constructed, and may contain options which are not standard on all models. Lennar reserves the right to make changes to these floor plans, specifications, dimensions and elevations without prior notice. Stated dimensions and square footage are approximate and should not be used as representation of the home's precise or actual size. Any statement, verbal or written, regarding "under air" or "finished area" or any other description or modifier of the square footage size of any home is a shorthand description of the manner in which the square footage was estimated and should not be construed to indicate certainty. See a Lennar new home consultant for further information. Garage sizes may vary from home to home and may not accommodate all vehicles. Copyright © 2015 Lennar Corporation. Lennar and the Lennar logo are registered service marks of Lennar Corporation and/or its subsidiaries. CGC - 062343. 09/15

Townhome Model C

3-Story | 4 Bedrooms | 3.5 Baths & Powder Bath | Family Room
Elevator | 2-Car Garage



2,338	sq. ft.	A/C Area
393	sq. ft.	2-Car Garage
27	sq. ft.	Covered Entry
<hr/>		
2,758	sq. ft.	Total

Preliminary Artist's Concept

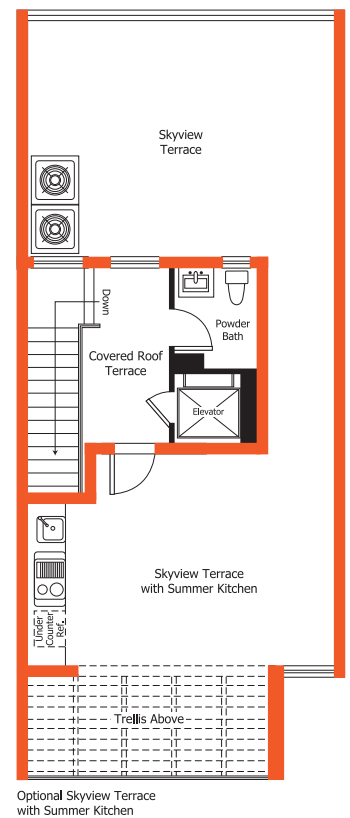
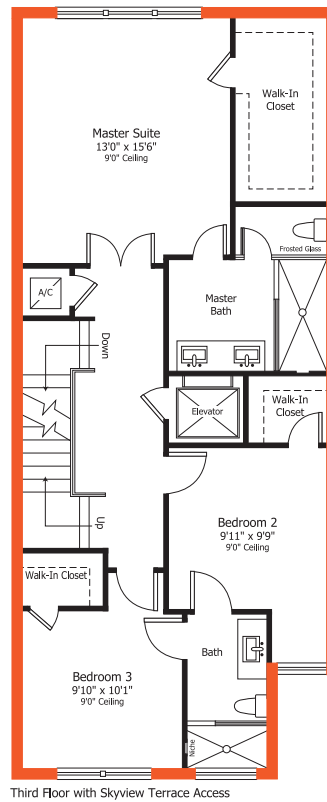
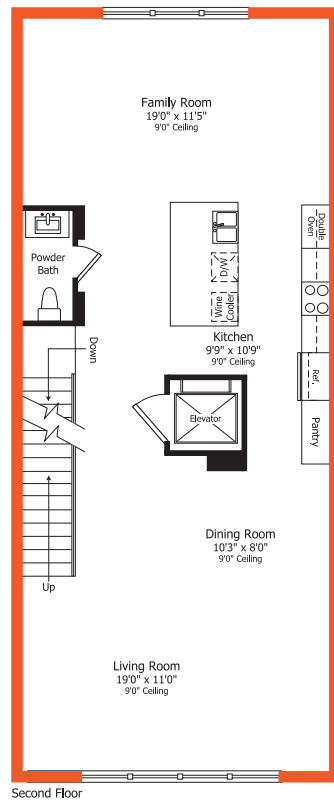
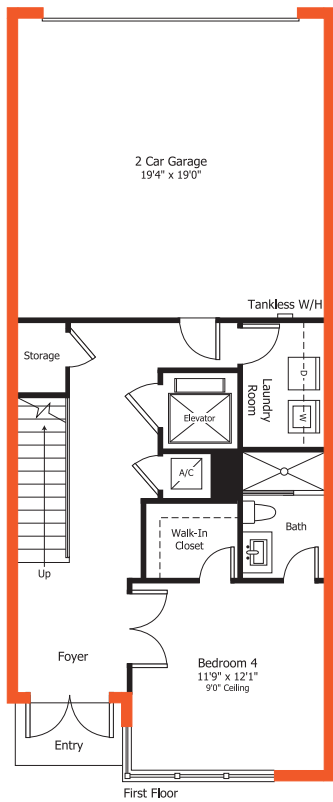
Plans and elevations are artist's renderings and may not accurately represent the actual condition of a home as constructed, and may contain options which are not standard on all models. Lennar reserves the right to make changes to these floor plans, specifications, dimensions and elevations without prior notice. Stated dimensions and square footage are approximate and should not be used as representation of the home's precise or actual size. Any statement, verbal or written, regarding "under air" or "finished area" or any other description or modifier of the square footage size of any home is a shorthand description of the manner in which the square footage was estimated and should not be construed to indicate certainty. See a Lennar new home consultant for further information. Garage sizes may vary from home to home and may not accommodate all vehicles. Copyright © 2015 Lennar Corporation. Lennar and the Lennar logo are registered service marks of Lennar Corporation and/or its subsidiaries. CGC - 062343. 09/15



Townhome Model C

Skyview Terrace

4-Story | 4 Bedrooms | 3 Baths | Family Room | Elevator | 2-Car Garage
Skyview Terrace with Summer Kitchen & 2 Powder Baths



2,471	sq. ft.	A/C Area
393	sq. ft.	2-Car Garage
27	sq. ft.	Covered Entry
746	sq. ft.	Skyview Terrace
<hr/>		
3,637	sq. ft.	Total

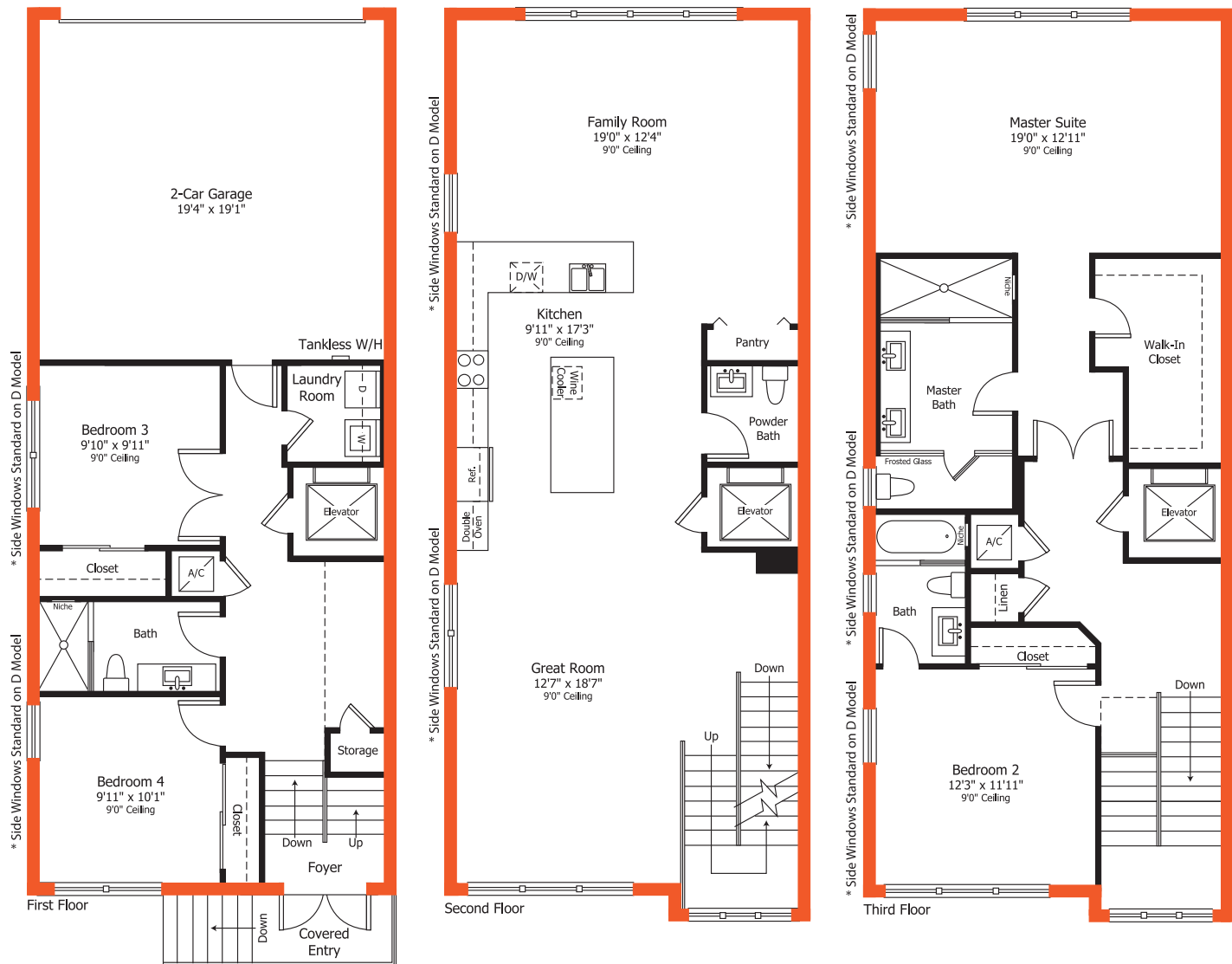


Preliminary Artist's Concept

Plans and elevations are artist's renderings and may not accurately represent the actual condition of a home as constructed, and may contain options which are not standard on all models. Lennar reserves the right to make changes to these floor plans, specifications, dimensions and elevations without prior notice. Stated dimensions and square footage are approximate and should not be used as representation of the home's precise or actual size. Any statement, verbal or written, regarding "under air" or "finished area" or any other description or modifier of the square footage size of any home is a shorthand description of the manner in which the square footage was estimated and should not be construed to indicate certainty. See a Lennar new home consultant for further information. Garage sizes may vary from home to home and may not accommodate all vehicles. Copyright © 2015 Lennar Corporation. Lennar and the Lennar logo are registered service marks of Lennar Corporation and/or its subsidiaries. CGC - 062343. 09/15

Townhome Model D

3-Story | 4 Bedrooms | 3 Baths & Powder Bath | Family Room
Elevator | 2-Car Garage



2,473	sq. ft.	A/C Area
402	sq. ft.	2-Car Garage
18	sq. ft.	Covered Entry
<hr/>		
2,893	sq. ft.	Total

* Side windows standard on D model

Preliminary Artist's Concept

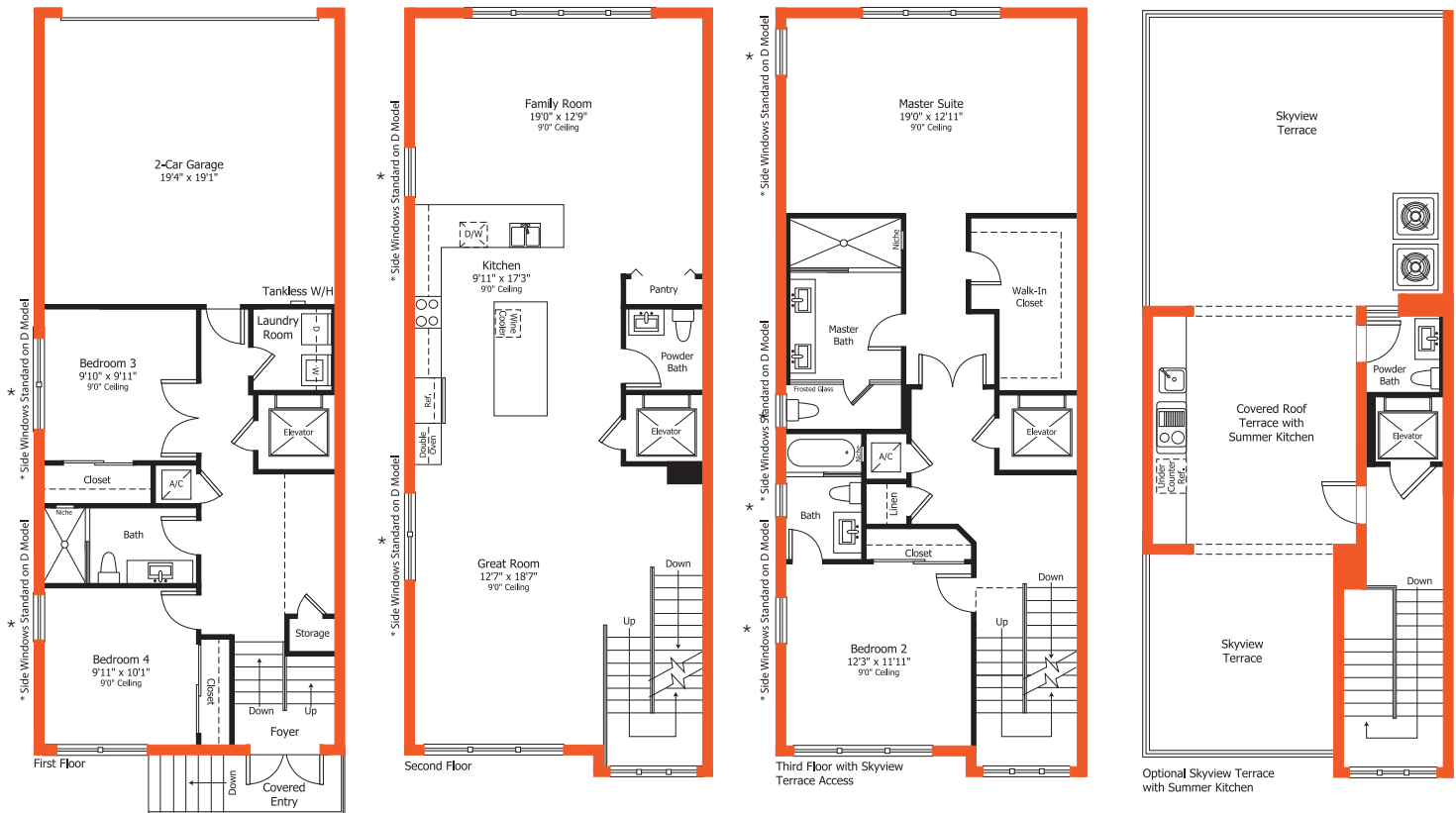
Plans and elevations are artist's renderings and may not accurately represent the actual condition of a home as constructed, and may contain options which are not standard on all models. Lennar reserves the right to make changes to these floor plans, specifications, dimensions and elevations without prior notice. Stated dimensions and square footage are approximate and should not be used as representation of the home's precise or actual size. Any statement, verbal or written, regarding "under air" or "finished area" or any other description or modifier of the square footage size of any home is a shorthand description of the manner in which the square footage was estimated and should not be construed to indicate certainty. See a Lennar new home consultant for further information. Garage sizes may vary from home to home and may not accommodate all vehicles. Copyright © 2015 Lennar Corporation. Lennar and the Lennar logo are registered service marks of Lennar Corporation and/or its subsidiaries. CGC - 062343. 09/15



Townhome

Model D Skyview Terrace

4-Story | 4 Bedrooms | 3 Baths | Family Room | Elevator | 2-Car Garage
Skyview Terrace with Summer Kitchen & 2 Powder Baths



* Side windows standard on D model

2,591	sq. ft.	A/C Area
402	sq. ft.	2-Car Garage
18	sq. ft.	Covered Entry
803	sq. ft.	Skyview Terrace
<hr/>		
3,814	sq. ft.	Total



Preliminary Artist's Concept

Plans and elevations are artist's renderings and may not accurately represent the actual condition of a home as constructed, and may contain options which are not standard on all models. Lennar reserves the right to make changes to these floor plans, specifications, dimensions and elevations without prior notice. Stated dimensions and square footage are approximate and should not be used as representation of the home's precise or actual size. Any statement, verbal or written, regarding "under air" or "finished area" or any other description or modifier of the square footage size of any home is a shorthand description of the manner in which the square footage was estimated and should not be construed to indicate certainty. See a Lennar new home consultant for further information. Garage sizes may vary from home to home and may not accommodate all vehicles. Copyright © 2015 Lennar Corporation. Lennar and the Lennar logo are registered service marks of Lennar Corporation and/or its subsidiaries. CGC - 062343. 09/15

CosmoChic

ei-Features

LAND  MARK
D O R A L

GENERAL FEATURES:

- Quality Concrete Block Construction
- Precast Concrete Floors
- Flat Concrete Roof
- Elegant Covered Entries (per plan)
- Impact Resistant Windows and Glass Doors
- Paver Driveway, Entry Walk and Patio
- Exterior Paint in Contemporary Color Schemes
- Hurricane Resistant Steel Garage Doors
- Automatic Garage Door Opener with Remote
- Designer Landscape
- Contemporary-Style Exterior Lighting
- Front Door Chime

INTERIOR FEATURES:

- Advanced Savant™ Wireless Technology System Including:
 - Savant Smart Host and Controller
 - Lighting Processor with 2 WiFi Keypads to Control Lighting in Two Areas
 - Wireless, Programmable Thermostat for Central A/C and Heating System
 - Integrated IP Camera
 - Controlled Schlage® Front Door Lock

- Plush Stain Resistant Carpet in a Choice of Designer Colors
- 24"x24" Porcelain Tile in All Main Living Areas in Choice of Designer Colors
- Contemporary-Style Recessed Hi-Hats Throughout Home
- Contemporary-Style Stainless Steel Stair Railings and Handrails
- Decorative Contemporary Wall Sconces In Stairwells (per plan)
- Contemporary-Style Interior Door Hardware
- Smooth Finish Walls and Ceilings
- Rocker-Style Light Switches
- Contemporary-Style Base Boards and Casings
- Category 5 Structured Wiring for Phones in Kitchen Only. Family Room and All Bedrooms Wired for Cable and Internet, Home Run to Central Distribution Panel
- RG6 Shielded Coaxial Television Cable in All Bedrooms and Family Room, Home Run to Central Distribution Panel
- Elevator (per plan)
- Pre-Wired for Ceiling Fan in all Bedrooms and Family Room (per plan)
- Marble Windowsills
- Tankless Water Heater
- Carbon Monoxide and Smoke Detectors Throughout

KITCHEN FEATURES:

- Deluxe Stainless Steel Appliance Package Featuring:
 - French Door Refrigerator with Ice and Water in Door
 - Drop-in Glass Top Electric Cooktop
 - Contemporary Stainless Steel Recirculating Hood
 - Built In Microwave/Convection Oven
 - Energy Efficient Dishwasher
 - Deluxe Under-Counter Wine Chiller
- 36" Contemporary-Style Flat Panel Cabinets in Choice of White Gloss, Wood Finish Espresso, or a combination of both. You choose! With Integrated Stainless Steel Handles
- Under-Cabinet Lighting
- Cabinet Style Kitchen Pantry (per plan)
- Contemporary-Style White Quartz Kitchen Countertops with Square Edge
- Choice of White Quartz or Contemporary Accent Mosaic in Choice of Color, Kitchen Backsplashing
- Stainless Steel Rectangular Undermount Kitchen Sink
- Contemporary-Style Kitchen Faucet with Pull Out Spray
- Food Waste Disposer
- Recessed Contemporary-Style Hi-Hat Lighting



The specific features, amenities, floor plans, elevations, square footage, and designs vary per plan and community and are subject to changes or substitution without notice. We reserve the right to substitute equipment, material, appliances and brand names with items of equal or higher, in our sole opinion, value. Color and size variations may occur. The prices of our homes, included features, and available locations are subject to change without notice. Please see the actual home purchase agreement for additional information, disclosures and disclaimers relating to the home and its features. Void where prohibited by law. Proposed amenities for the community are subject to changes, substitutions and/or deletions without notice. Lennar makes no representation or guarantee that the community or any amenities will be built out as currently planned. Copyright © 2016 Lennar Corporation. Lennar, the Lennar logo, and the Everything's Included logo are registered service marks of Lennar Corporation and/or its subsidiaries. CGC - 062343. 03/16

BATH FEATURES:

- All Baths Include Contemporary-Style White Quartz Countertops with 4" Backsplash
- Master Bath Includes Contemporary-Style White Gloss Floating Vanities with Vessel Sink
- Powder Bath Includes Contemporary-Style White Gloss Floating Vanity with Vessel Sink
- Secondary Baths Include Contemporary-Style White Gloss Vanity with Undermount Sink
- Master Shower Includes "Rain Style" Shower Head
- Master Shower Tiles in Elegant Contemporary Style
- Contemporary-Style Chrome Faucets in All Baths
- High Gloss White Bathtub in Secondary Baths (per plan)
- Contemporary-Style Rectangular Vanity Mirrors
- All baths Include Contemporary One-Piece Toilets
- 24"x24" Matte Porcelain Tile Flooring
- Exhaust Fans in all Bathrooms

LAUNDRY ROOM:

- 24"x24" Porcelain Tile Flooring
- Large Capacity Washer

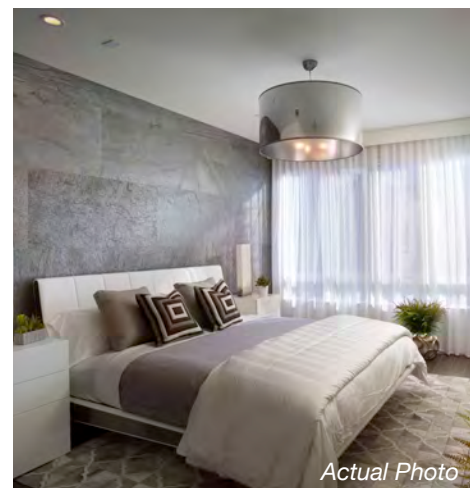
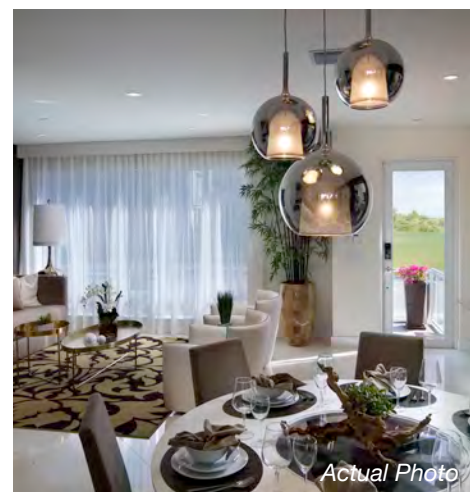
- Large Capacity Dryer

OPTIONAL SKYVIEW TERRACES:

2-STORY TOWNHOMES - AVAILABLE ON SELECTED MODELS

3-STORY TOWNHOMES - AVAILABLE ON ALL MODELS

- Air Conditioned Stairwell Access to Skyview Terrace
- Elevator in Select Models
- Precast Concrete Floor Finished with Non-Skid Flooring
- Air Conditioned Powder Bath Includes:
 - Contemporary-Style Vanity Cabinet with Sink
 - Contemporary-Style Chrome Faucet
 - Contemporary-Style Vanity Mirror
 - Ceramic Tile Flooring
- Summer Kitchen Includes:
 - Stainless Steel BBQ Grill
 - Stainless Steel Burners
 - Stainless Steel Undercounter Refrigerator
 - Stainless Steel Undermount Sink with Contemporary Brushed Nickel Faucet
 - Granite Countertop with 4" Backsplash

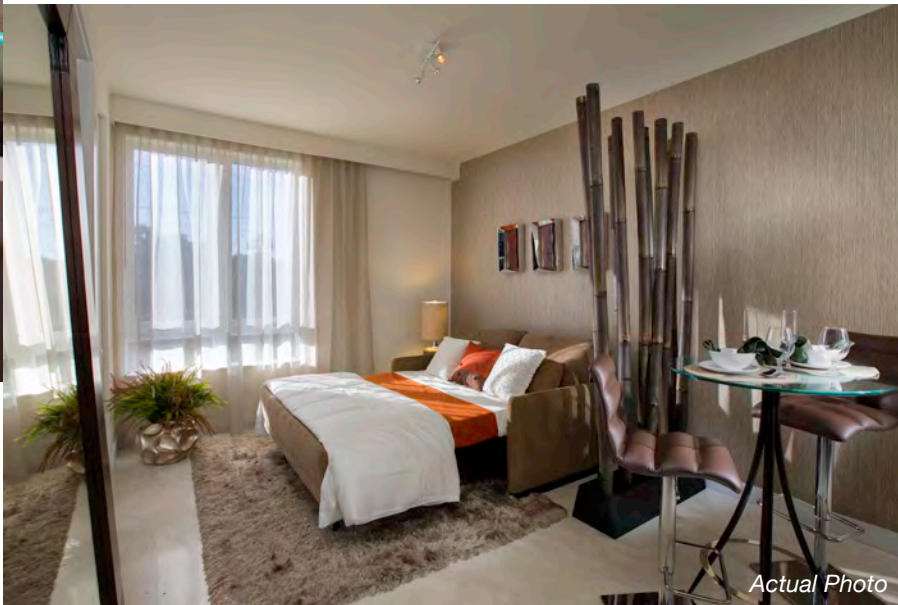


**NEXTGEN[®] PRIVATE
SUITE FEATURES:**

- 24"X24" Porcelain Tile in Living Area in Same Color as Main Home
- Contemporary-Style Recessed Hi-Hats Throughout
- Smooth Finish Walls and Ceilings
- Rocker-Style Light Switches
- Contemporary-Style Base Boards and Casings
- Pre-Wired for Ceiling Fan
- Stainless Steel Refrigerator
- Built in Microwave Oven
- 36" Contemporary-Style Panel Cabinets in Same Color as Kitchen in Main Home
- Contemporary-Style Kitchen Countertop in Same Color as Kitchen in Main Home
- Stainless Steel Rectangular Undermount Kitchen Sink with Faucet
- Food Waste Disposer
- Stackable Washer and Dryer

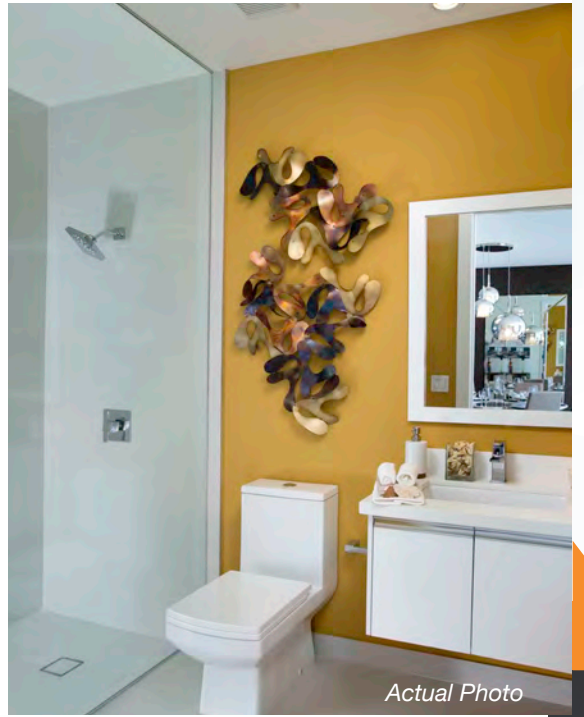


The specific features, amenities, floor plans, elevations, square footage, and designs vary per plan and community and are subject to changes or substitution without notice. We reserve the right to substitute equipment, material, appliances and brand names with items of equal or higher, in our sole opinion, value. Color and size variations may occur. The prices of our homes, included features, and available locations are subject to change without notice. Please see the actual home purchase agreement for additional information, disclosures and disclaimers relating to the home and its features. Void where prohibited by law. Proposed amenities for the community are subject to changes, substitutions and/or deletions without notice. Lennar makes no representation or guarantee that the community or any amenities will be built out as currently planned. Copyright © 2016 Lennar Corporation. Lennar, the Lennar logo, the NextGen logo, NextGen - The Home Within a Home, and the Everything's Included logo are registered service marks of Lennar Corporation and/or its subsidiaries. CGC - 062343. 03/16



Elevations/renderings are conceptual in nature and are merely an artist's rendition and may contain options or features that are not standard on all models. Photographs depict the community as of the dates taken. Pictures are conceptual in nature and are merely an artist's rendition. These images/pictures are solely for illustrative purposes and should never be relied upon. The specific features, amenities, floor plans, elevations, square footage, available locations and designs vary per plan and community and are subject to changes or substitution without notice. Please see the actual home purchase agreement for additional information, disclosures and disclaimers relating to the home and its features. Copyright © 2015 Lennar® Corporation. Lennar®, the Lennar® logo, and the Everything's Included® logo are registered service marks of Lennar® Corporation and/or its subsidiaries. CGC - 062343. 09/15

Upgrade to an unprecedented level of luxury.





Elegant function meets indoor-outdoor living.



Actual Photo



Conceptual Image



Actual Photo





**EVERYTHING'S
INCLUDED
HOMES**

LENNAR[®]