



INSPIRED WATERFRONT LIVING



EXECUTIVE ESTATES COLLECTION

# COMMUNITY AERIAL VIEW



Preliminary Artist's Concept

**LENNAR**

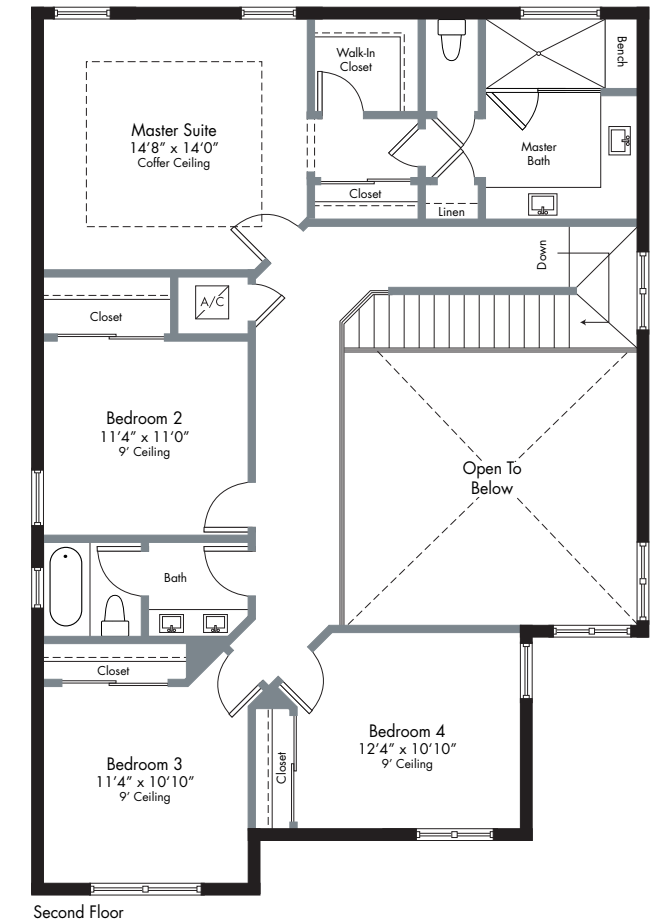
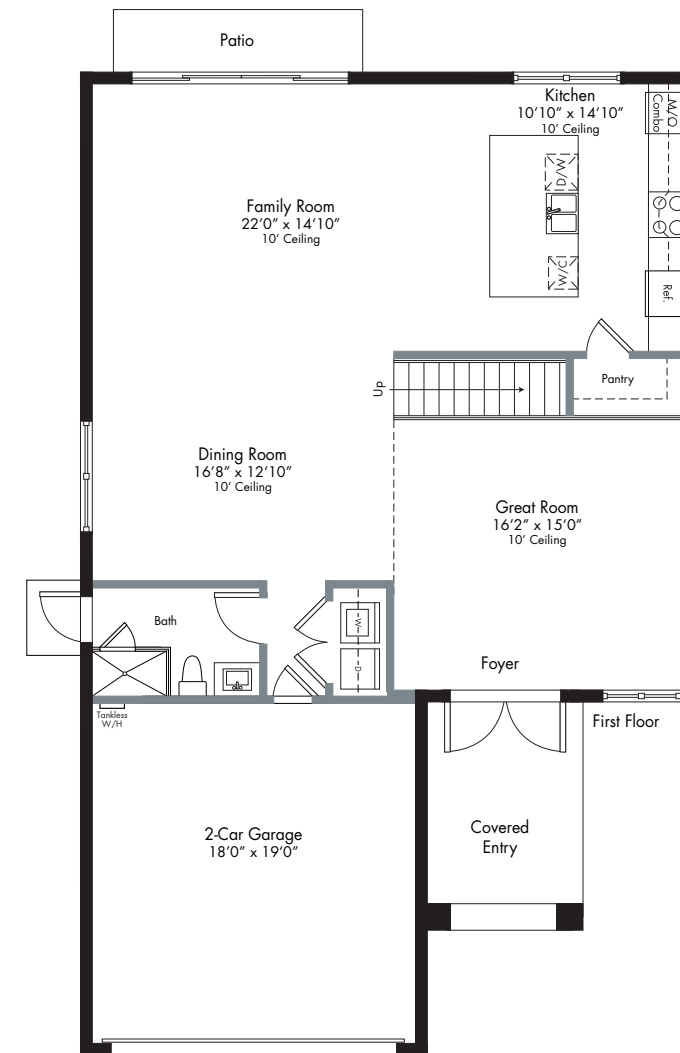


Pictures are conceptual in nature and are merely an artist's rendition. These pictures are solely for illustrative purposes and should never be relied upon. The past, present, future of proposed roads, easements, land uses, conditions, plat maps, lot sizes or layouts, zoning, utilities, drainage, land conditions, or development of any type whatsoever, whether reflected in the picture, or whether outside the boundaries of the picture, may not be shown or may be incomplete or inaccurate. The present, future of proposed roads, easements, land uses, conditions, plat maps, lot sizes or layouts, zoning, drainage, land conditions, or development of any type may or may not change in the future. It is not uncommon that any of the foregoing can change without notice to you. You should never rely on the accuracy of this picture when making any decisions relative to purchasing any property. We reserve the right to make changes at any time without notice. Select homesites have premiums. Proposed amenities for the community are subject to changes, substitutions and/or deletions without notice. Lennar makes no representation or guarantee that the community or any amenities will be built out as currently planned. Copyright © 2016 Lennar Corporation. Lennar and the Lennar logo are registered service marks or service marks of Lennar Corporation and/or its subsidiaries. CGC 062343\_07/16

# NIRVANA

## EXECUTIVE ESTATES COLLECTION

2-STORY | 4 BEDROOMS | 3 BATHS | FAMILY ROOM | 2-CAR GARAGE



2,531 Sq. Ft. A/C Area  
 110 Sq. Ft. Covered Entry  
 380 Sq. Ft. Garage  
 -----  
 3,021 Sq. Ft. Total

Preliminary Artist's Concepts

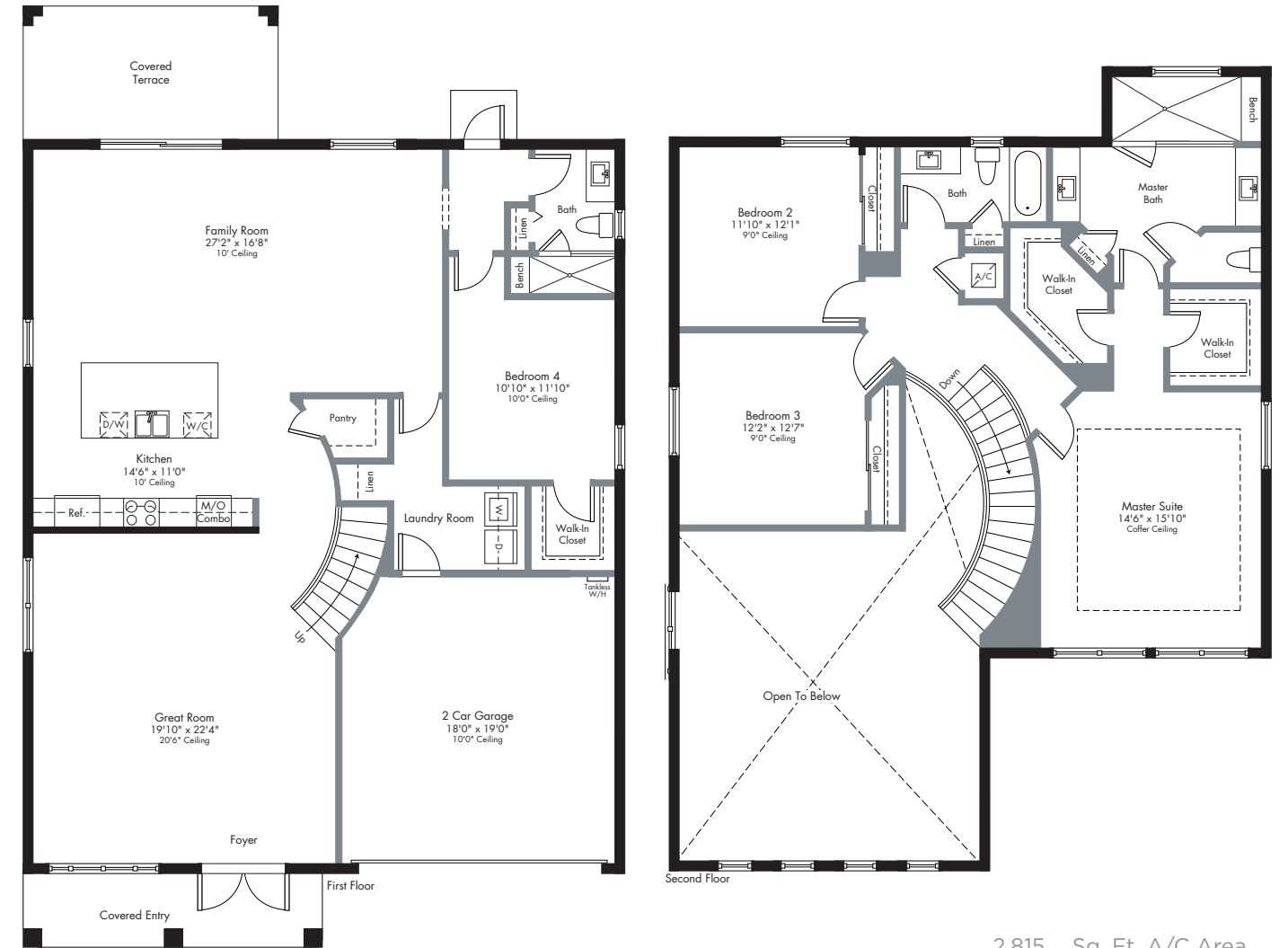
Preliminary Artist's Concept



# OASIS

## EXECUTIVE ESTATES COLLECTION

2-STORY | 4 BEDROOMS | 3 BATHS | FAMILY ROOM | COVERED TERRACE | 2-CAR GARAGE



2,815	Sq. Ft. A/C Area
100	Sq. Ft. Covered Entry
162	Sq. Ft. Covered Terrace
362	Sq. Ft. Garage
<hr/>	
3,439	Sq. Ft. Total

Preliminary Artist's Concepts

Preliminary Artist's Concept



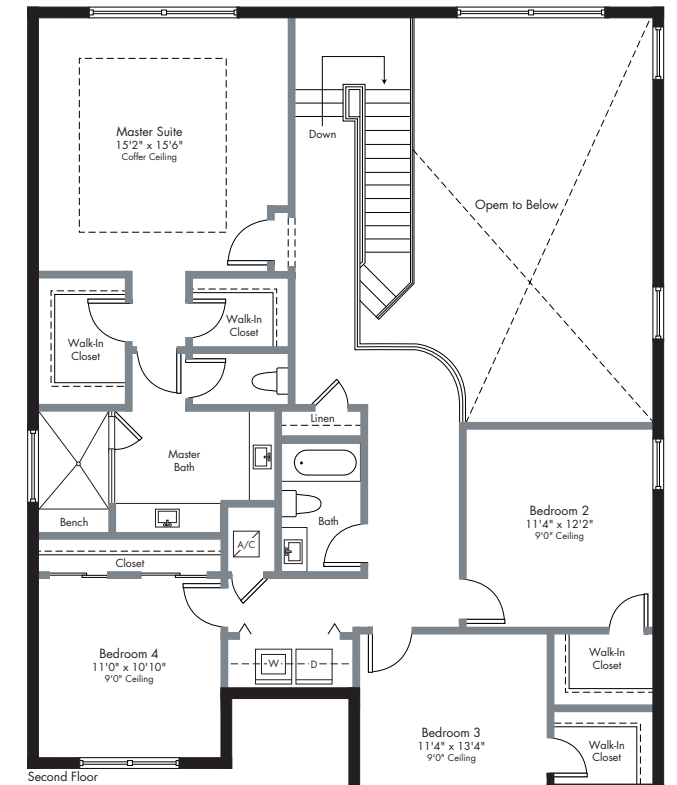
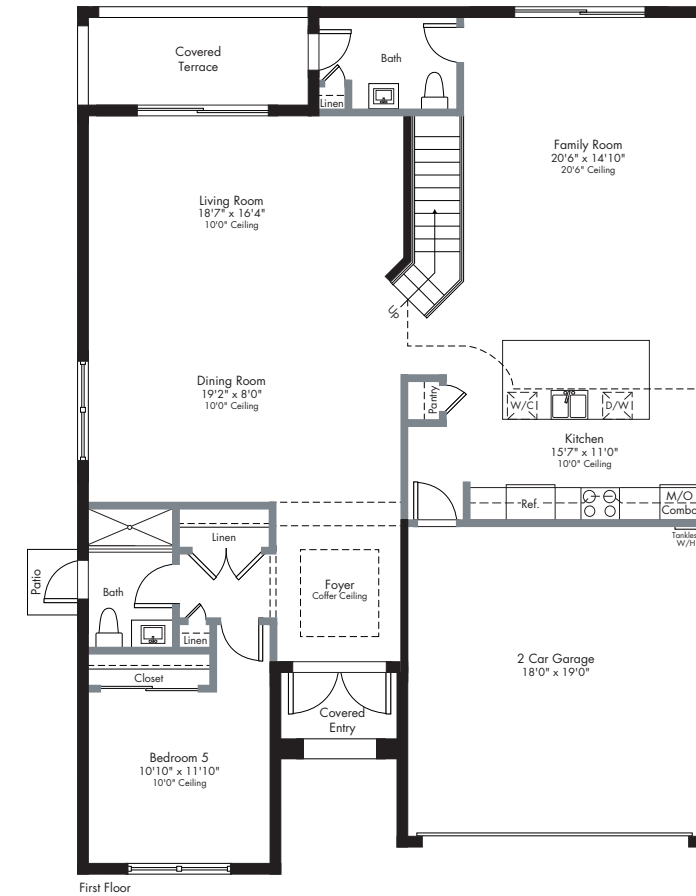
**LENNAR**

Plans and elevations are artist's renderings and may not accurately represent the actual condition of a home as constructed, and may contain options which are not standard on all models. Lennar reserves the right to make changes to these floor plans, specifications, dimensions and elevations without prior notice. Stated dimensions and square footage are approximate and should not be used as representation of the home's precise or actual size. Any statement, verbal or written, regarding "under air" or "finished area" or any other description or modifier of the square footage size of any home is a shorthand description of the manner in which the square footage was estimated and should not be construed to indicate certainty. See a Lennar new home consultant for further information. Garage sizes may vary from home to home and may not accommodate all vehicles. Void Where Prohibited By Law. Copyright © 2016 Lennar Corporation. Lennar and the Lennar logo are registered service marks or service marks of Lennar Corporation and/or its subsidiaries. CGC 082343, 07/16

# RETREAT

## EXECUTIVE ESTATES COLLECTION

2-STORY | 5 BEDROOMS | 3.5 BATHS | FAMILY ROOM | COVERED TERRACE | 2-CAR GARAGE



2,976	Sq. Ft. A/C Area
38	Sq. Ft. Covered Entry
86	Sq. Ft. Covered Terrace
374	Sq. Ft. Garage
<hr/>	
3,474	Sq. Ft. Total

Preliminary Artist's Concepts

Preliminary Artist's Concept



# SANCTUARY

## EXECUTIVE ESTATES COLLECTION

2-STORY | 5 BEDROOMS | 3.5 BATHS | FAMILY ROOM | 2-CAR GARAGE



3,065 Sq. Ft. A/C Area  
 36 Sq. Ft. Covered Entry  
 377 Sq. Ft. Garage  
 -----  
 3,478 Sq. Ft. Total

Preliminary Artist's Concepts

Preliminary Artist's Concept



Plans and elevations are artist's renderings and may not accurately represent the actual condition of a home as constructed, and may contain options which are not standard on all models. Lennar reserves the right to make changes to these floor plans, specifications, dimensions and elevations without prior notice. Stated dimensions and square footage are approximate and should not be used as representation of the home's precise or actual size. Any statement, verbal or written, regarding "under air" or "finished area" or any other description or modifier of the square footage size of any home is a shorthand description of the manner in which the square footage was estimated and should not be construed to indicate certainty. See a Lennar new home consultant for further information. Garage sizes may vary from home to home and may not accommodate all vehicles. Void Where Prohibited By Law. Copyright © 2016 Lennar Corporation. Lennar and the Lennar logo are registered service marks or service marks of Lennar Corporation and/or its subsidiaries. CGC 082343. 07/16

# TRANQUILITY

## EXECUTIVE ESTATES COLLECTION

2-STORY | 5 BEDROOMS | 4 BATHS | FAMILY ROOM | 2-CAR GARAGE



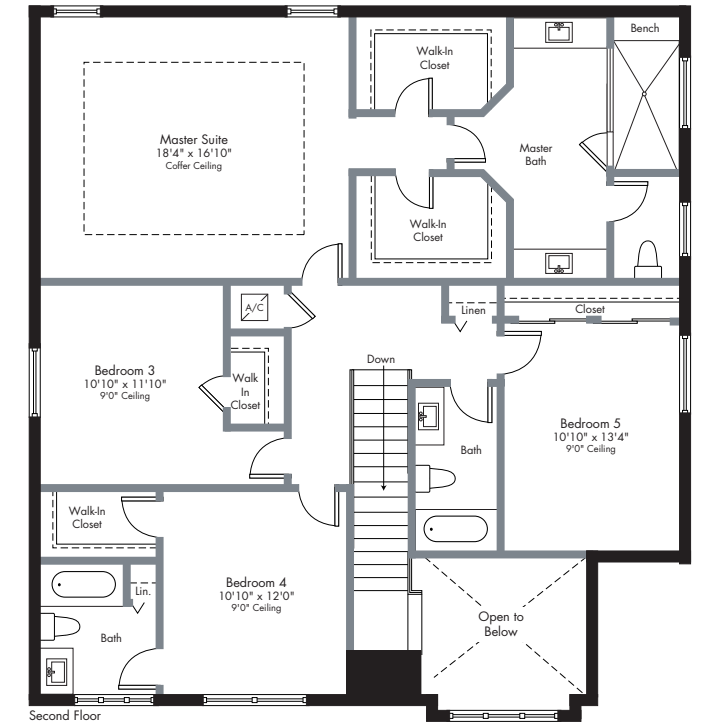
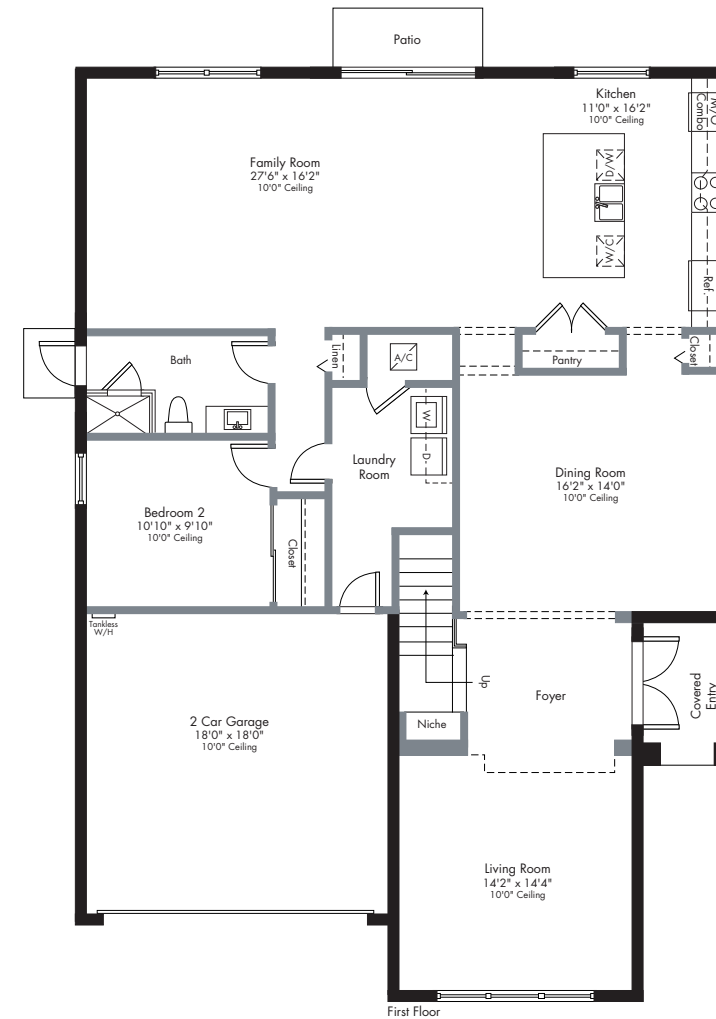
STANDARD ELEVATION A



OPTIONAL ELEVATION B-STONE



OPTIONAL ELEVATION C-RESYSTA



3,162 Sq. Ft. A/C Area  
 48 Sq. Ft. Covered Entry  
 348 Sq. Ft. Garage  
 -----  
 3,558 Sq. Ft. Total

Preliminary Artist's Concepts

Preliminary Artist's Concept



# EXECUTIVE ESTATES COLLECTION

## EI - FEATURES

### COMMUNITY FEATURES

- Built and Marketed by Lennar, a Fortune 500 Company Listed on the New York Stock Exchange (LEN), one of the Nation's Leading Homebuilders since 1954
- Satori, a Premier Gated Waterside Community with Uniquely Designed Townhomes and Estate Homes, all Embracing a Magnificent 67-acre Lake
- Satori is Part of Lennar's Serenity Collection, a New Concept in Home Designs Offering Elegant and Innovative Elevations and Floorplans
- Future Iconic Entry Monuments
- Future Lakeside Clubhouse with:
  - Resort-style Pool and Spa
  - Children's Waterpark and Playground Area
  - Fully-equipped Fitness Center
- Future Intimate Park Area with:
  - Decorative Trellis'
  - Zen-inspired Garden with Gazebos
  - Relaxing Green Areas with Serene Walking Paths
- Conveniently located with immediate access to Shopping, Places of Worship, Schools and Major Thoroughfares
- Located within a Community Development District (CDD) Ask a Lennar New Home Consultant for details

### EXTERIOR FEATURES

- 2-Story Concrete Block Construction
- Flat Concrete Roof Tile
- Designer Exterior Paint in Decorator Schemes
- Code Compliant Hurricane Panels
- Flat Panel Hurricane Code Approved Garage Door
- Automatic Garage Door Opener with Remote
- Impact Rated Glazed Double Front Doors
- Exterior Hose Bibs
- Exterior Front Elevation Coach Lights or High-Hats (Per Plan)
- Decorative Architectural Stucco Design Details on Front Elevation (Per Plan)
- Decorative Outlookers on Front Elevation (Per Plan)
- Bronze Color Window Frames Throughout
- Brick Paved Covered Entry, Patio Areas and Covered Terrace (Per Plan)

### INTERIOR FEATURES

- Alarm System with Key Pad
- Gypsum Flooring Underlayment on Second Floor
- 18"x18" Ceramic Tile in Foyer, Kitchen, Breakfast Area, Family Room and Laundry Room in Choice of Decorator Colors
- Carpeting in Living Room, Dining Room, All Bedrooms, Hallways and Stairways with Padding in Choice of Decorator Colors
- Raised Panel Interior Doors
- Raised Panel Bi-Fold Closet Doors
- Modern Style Baseboards and Door Casings
- Contemporary-Style Recessed Hi-Hats Throughout Home
- Brushed Nickel Stair Railings & Wood Handrail (Per Plan)
- Decorative Wall Sconces in Stairwell (Per Plan)
- Home Automation with NEXIA™ Home Intelligence with:
  - Wireless Keypad Lock
  - Light Module
  - Connected Thermostat for Central A/C and Heating System
  - Security Camera
- Lever Style Interior Door Hardware
- Smooth Finish Walls and Textured Ceilings Throughout

### INTERIOR FEATURES (CONTINUED)

- Designer Quality Paint on all Walls and Ceilings
- Rocker Style Switches Throughout Home
- Category 5e Structured Wiring for Phone in Kitchen only. Family Room and all Bedrooms Wired for Internet, Home Run to Central Distribution Panel
- RG6 Shielded Coaxial Television Cable in all Bedrooms and Family Room, Home Run to Central Distribution Panel
- Pre-wired for Ceiling Fan in Family Room and all Bedrooms
- Decorative Marble Windowsills Throughout
- Smoke and Carbon Monoxide Detectors Throughout
- Electric Water Heater
- Central Air Conditioning and Heating System with Programmable Thermostat
- Vinyl-Clad Ventilated Closet Shelving

### KITCHEN FEATURES

- Quality Stainless Steel Appliance Package Featuring:
  - Side-by-Side Refrigerator with Ice and Water Dispenser in Door
  - 30" Drop-in Glass Cook Top
  - Deluxe Under Counter Wine Cooler
  - Energy Saving Dishwasher
  - Contemporary Stainless Steel Recirculating Hood
  - Built-in Combo Microwave/Conventional Wall Oven
  - 42" Contemporary-Style Cabinetry with Brushed Nickel Hardware and Quartz Countertops with Square Edge and 6" Backsplash
  - Large Kitchen Island with Cabinets on Both Sides
  - Stainless Steel Undermount Kitchen Sink
  - Designer Brushed Nickel Single Lever Pull-Out Faucet
- Food Waste Disposal
- Recessed Overhead Lighting

### BATH FEATURES

- Master Bathroom
  - Floating Cabinets with White Quartz Countertops and Vessel Sinks
  - Recessed Lighting
  - "Rain-Style" Shower Head with Handheld Sprayer
  - Shower Floor in Elegant "Pebble" Style Stone
  - Clear Glass Shower Enclosure
  - Built-In Shower Bench
- Secondary Bathrooms
  - Contemporary-Style Cabinets with Elegant Cultured Marble Vanity Tops and Brushed Nickel Hardware
  - Designer Style Lighting Over Vanities
- Elongated Toilets
- 12"x24" Ceramic Floor Tile
- Mirrored Medicine Cabinet (Per Plan)
- Full Width Vanity Mirrors
- Exhaust Fans
- Designer Faucets

### LAUNDRY FEATURES

- Large Capacity Washer
- Large Capacity Dryer
- Ventilated Wire Shelving above Washer/Dryer

# PRELIMINARY OVERALL COMMUNITY SITE PLAN



Preliminary Artist's Concept



Site plans and community maps are conceptual in nature and are merely an artist's rendition. These maps are solely for illustrative purposes and should never be relied upon. THE PAST, PRESENT, FUTURE OR PROPOSED ROADS, EASEMENTS, LAND USES, CONDITIONS, PLAT MAPS, LOT SIZES OR LAYOUTS, ZONING, UTILITIES, DRAINAGE, LAND CONDITIONS, OR DEVELOPMENT OF ANY TYPE WHATSOEVER, WHETHER REFLECTED ON THE SITE PLAN OR MAP, OR WHETHER OUTSIDE THE BOUNDARIES OF THE SITE PLAN OR MAP, MAY NOT BE SHOWN OR MAY BE INCOMPLETE OR INACCURATE. THE PRESENT, FUTURE OR PROPOSED ROADS, EASEMENTS, LAND USES, CONDITIONS, PLAT MAPS, LOT SIZES OR LAYOUTS, ZONING, DRAINAGE, LAND CONDITIONS, OR DEVELOPMENT OF ANY TYPE MAY OR MAY NOT CHANGE IN THE FUTURE. IT IS NOT UNCOMMON THAT ANY OF THE FOREGOING CAN CHANGE WITHOUT NOTICE TO YOU. YOU SHOULD NEVER RELY ON THE ACCURACY OR THIS MAP IN MAKING ANY DECISIONS RELATIVE TO PURCHASING ANY PROPERTY. We reserve the right to make changes at any time without notice. Select homesites have premiums. Proposed amenities for the community are subject to changes, substitutions and/or deletions without notice. Lennar makes no representation or guarantee that the community or any amenities will be built out as currently planned.

The specific features, amenities, floor plans, elevations, square footage, and designs vary per plan and community and are subject to changes or substitution without notice. We reserve the right to substitute equipment, material, appliances and brand names with items of equal or higher, in our sole opinion, value. Color and size variations may occur. The prices of our homes, included features, and available locations are subject to change without notice. Please see the actual home purchase agreement for additional information, disclosures and disclaimers relating to the home and its features. Void where prohibited by law. Proposed amenities for the community are subject to changes, substitutions and/or deletions without notice. Lennar makes no representation or guarantee that the community or any amenities will be built out as currently planned. Copyright © 2016 Lennar Corporation. Lennar, the Lennar logo, Everything's Included and the Everything's Included logo are registered service marks of Lennar Corporation and/or its subsidiaries. CGC - 062343. 07/16





**LENNAR®**